



CHARLES BARTLETT
RESIDENTIAL



12 Park Crescent

Matlock Spa, Matlock, DE4 3TF

£1,850 Per month

A fully furnished four bedroom, three storey town house located in Matlock Spa, Derbyshire.

The ground floor of the property comprises double bedroom with ensuite, generous entrance hall and access to car port. The first floor provides a spacious, double aspect living room which links around into the dining area and fitted kitchen.

A large double bedroom with ensuite shower is found on the second floor. A double bedroom and a study, or alternatively a single fourth bedroom also on the second floor with a large family bathroom to complete the property.

Also boasts a private rear garden and parking for two vehicles.

Furnished
Council Tax Band D
EPC rating B

Located in the heart of the Derbyshire Dales, Matlock Spa is just ten minutes' walk away from the newly revitalised Matlock Town and a stone's throw from the Peak District National Park.

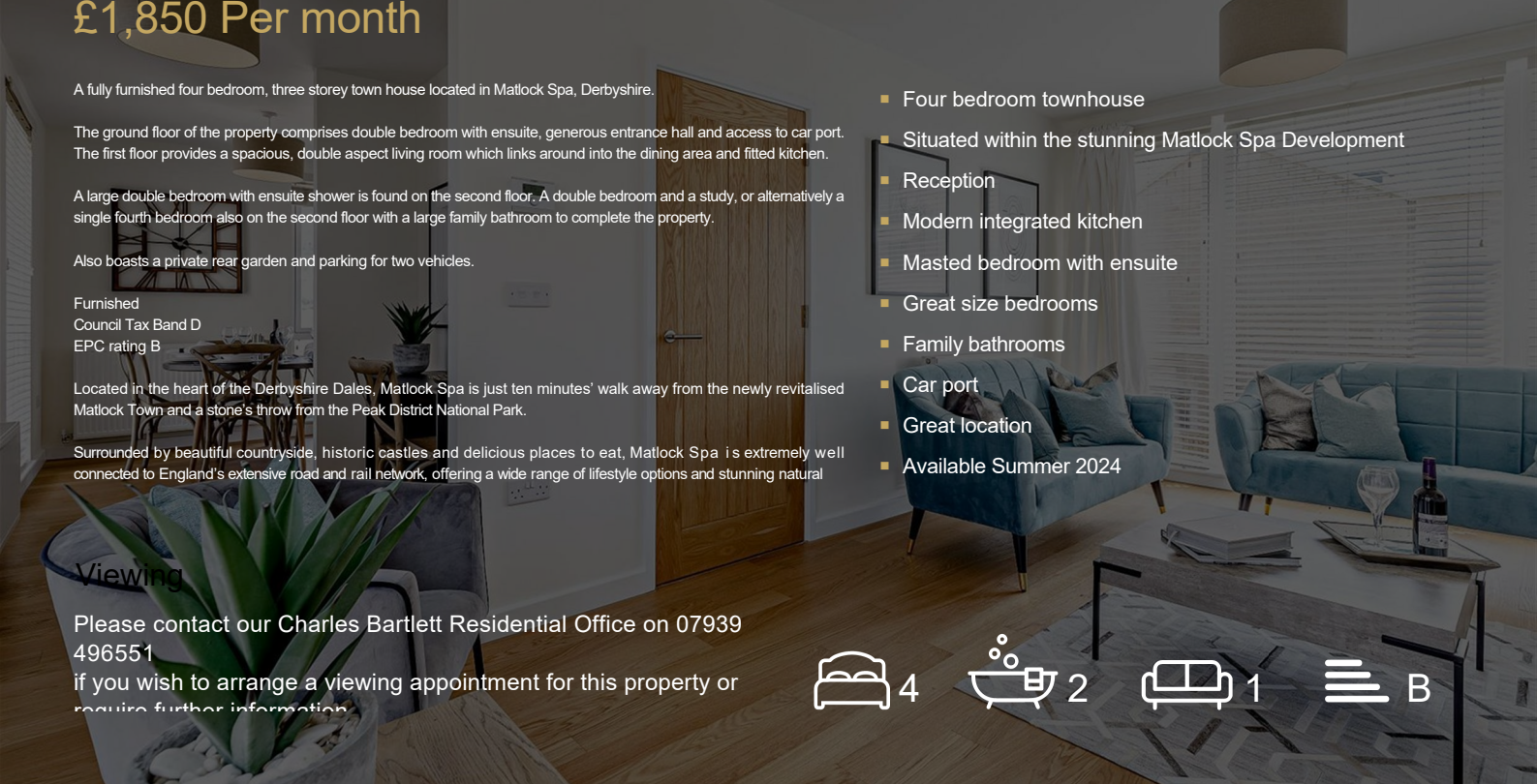
Surrounded by beautiful countryside, historic castles and delicious places to eat, Matlock Spa is extremely well connected to England's extensive road and rail network, offering a wide range of lifestyle options and stunning natural

- Four bedroom townhouse
- Situated within the stunning Matlock Spa Development
- Reception
- Modern integrated kitchen
- Masted bedroom with ensuite
- Great size bedrooms
- Family bathrooms
- Car port
- Great location
- Available Summer 2024

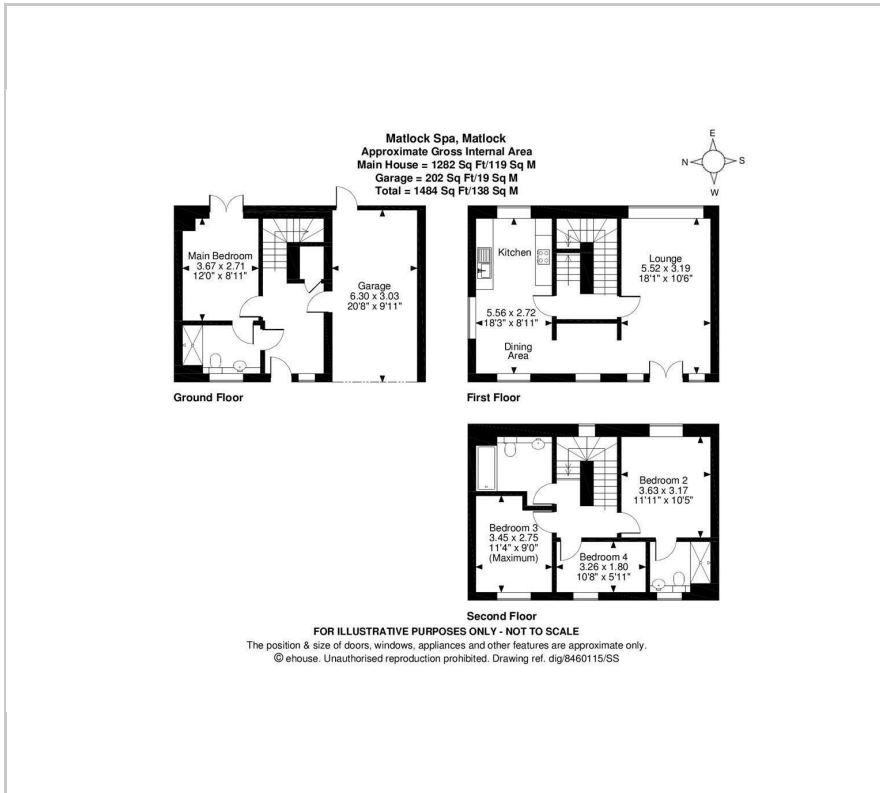
Viewing

Please contact our Charles Bartlett Residential Office on 07939 496551

if you wish to arrange a viewing appointment for this property or require further information



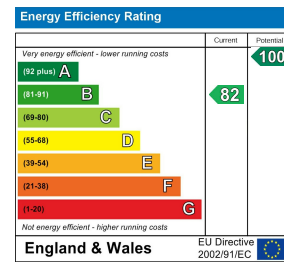
Floor Plan



Area Map



Energy Efficiency Graph



These particulars, whilst believed to be accurate are set out as a general outline only for guidance and do not constitute any part of an offer or contract. Intending purchasers should not rely on them as statements of representation of fact, but must satisfy themselves by inspection or otherwise as to their accuracy. No person in this firm's employment has the authority to make or give any representation or warranty in respect of the property.