



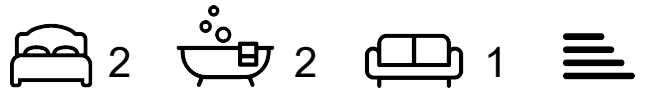
CHARLES BARTLETT  
RESIDENTIAL



## 19 Spa Villas

Matlock Spa, Matlock, DE4 3ST

£1,200 Per month



A spacious two bedroom Spa Villa apartment offering stunning viewings across the Derbyshire Dales.

The property offers bright and spacious open plan living comprising living room/kitchen/diner, master bedroom with ensuite shower room, second double bedroom and main bathroom.

Also benefits from secure entry system, balcony, full height windows and lockable bike storage.

Property is available un-furnished

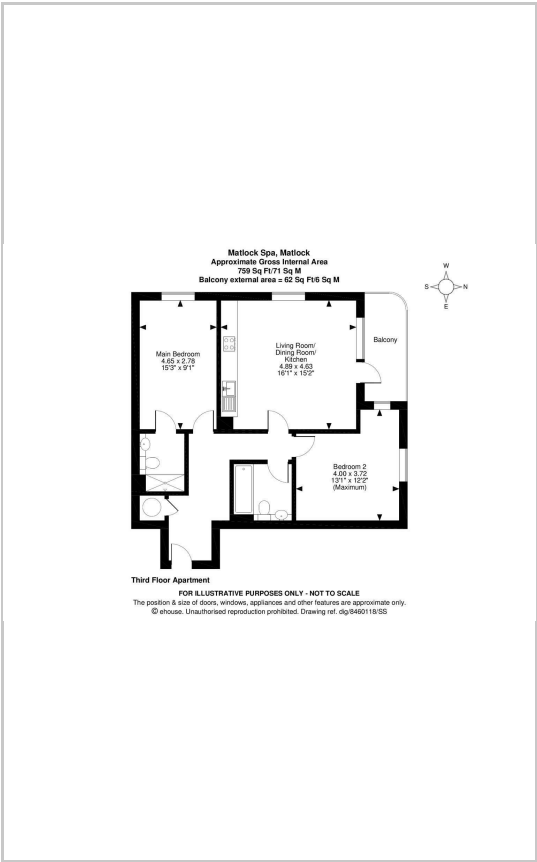
Located in the heart of the Derbyshire Dales, Matlock Spa is just ten minutes' walk away from the newly revitalised Matlock Town and a stone's throw from the Peak District National Park.



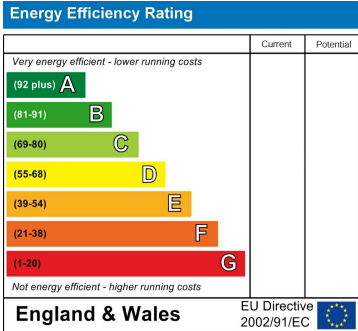
### Area Map



### Floor Plans



### Energy Efficiency Graph



These particulars, whilst believed to be accurate are set out as a general outline only for guidance and do not constitute any part of an offer or contract. Intending purchasers should not rely on them as statements of representation of fact, but must satisfy themselves by inspection or otherwise as to their accuracy. No person in this firms employment has the authority to make or give any representation or warranty in respect of the property.

The Newt, Denchworth Manor Hyde Road, Denchworth, Oxford, OX12 0DX  
 Tel: 07939 496551 Email: charles@charlesbartlett.co.uk www.charlesbartlett.co.uk