



# CHARLES BARTLETT RESIDENTIAL



## 15 Spa Villas

Matlock Spa, Matlock, DE4 3ST

£1,200 Per month

A stunning two bedroom apartment offering stunning viewings across the Derbyshire Dales.

The property offers bright and spacious open plan living comprising living room/kitchen/diner, master bedroom with ensuite shower room, second double bedroom and main bathroom.

Also benefits from secure entry system, balcony, full height windows and lockable bike storage.

Located in the heart of the Derbyshire Dales, Matlock Spa is just ten minutes' walk away from the newly revitalised Matlock Town and a stone's throw from the Peak District National Park.

Surrounded by beautiful countryside, historic castles and delicious places to eat, Matlock Spa is extremely well connected to England's extensive road and rail network, offering a wide range of lifestyle options and stunning natural surroundings.

A short drive away from the M1, motorists and rail users can get to London in less than three hours, Manchester in an hour and a half, or Derby in less than 40 minutes.

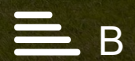
Matlock Spa - a lifestyle, not a location.

- Two bedroom apartment
- Open plan living room and kitchen
- Master bedroom with ensuite shower
- Second double bedroom
- Bathroom
- Balcony
- Beautiful views
- Parking
- Close to local shops, bars and restaurants
- Available April 2024

### Viewing

Please contact our Charles Bartlett Residential Office on 07939 496551

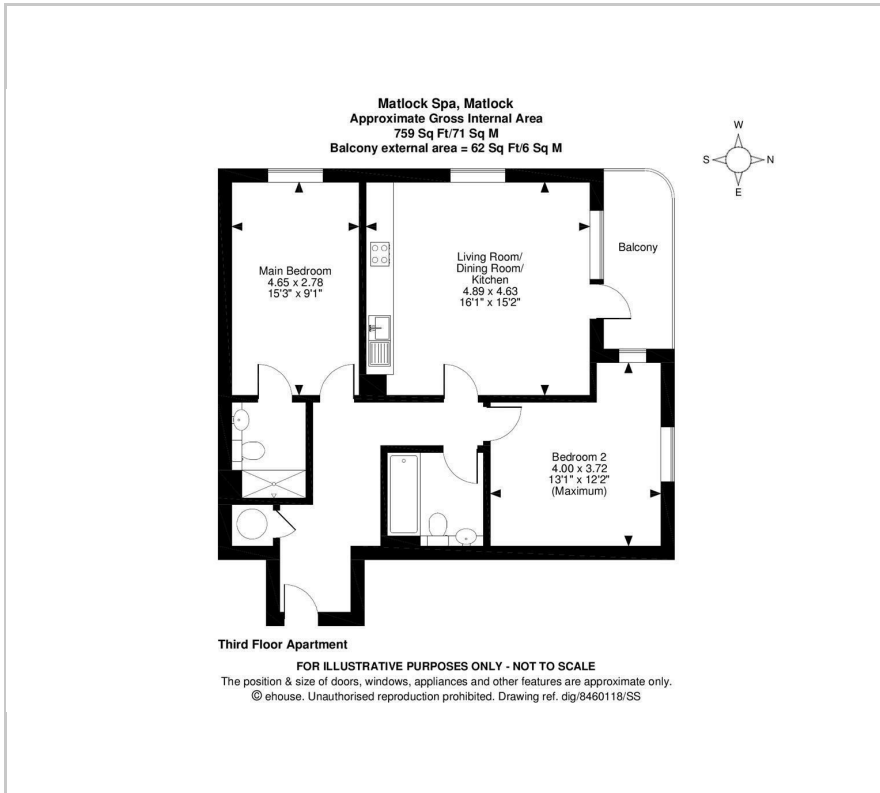
if you wish to arrange a viewing appointment for this property or require further information



MATLOCK SPA



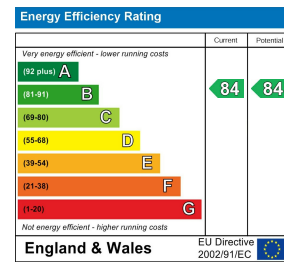
## Floor Plan



## Area Map



## Energy Efficiency Graph



These particulars, whilst believed to be accurate are set out as a general outline only for guidance and do not constitute any part of an offer or contract. Intending purchasers should not rely on them as statements of representation of fact, but must satisfy themselves by inspection or otherwise as to their accuracy. No person in this firm's employment has the authority to make or give any representation or warranty in respect of the property.