



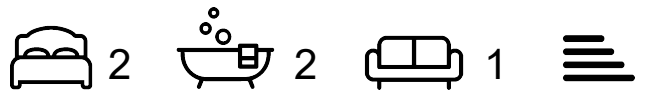
CHARLES BARTLETT  
RESIDENTIAL



## Spa Villas Matlock Spa Road

Matlock Spa, Matlock, DE4 3ST

Asking price £350,000



An spacious two bedroom Spa Villa offering stunning viewings across the Derbyshire Dales.

The property offers bright and spacious open plan living comprising living room/kitchen/diner, master bedroom with ensuite shower room, second double bedroom and main bathroom.

Also benefits from secure entry system, balcony, full height windows and lockable bike storage.

Located in the heart of the Derbyshire Dales, Matlock Spa is just ten minutes' walk away from the newly revitalised Matlock Town and a stone's throw from the Peak District National Park.

Surrounded by beautiful countryside, historic castles and delicious places to eat, Matlock Spa is extremely well connected to England's extensive road and rail network, offering a wide range of lifestyle options and stunning natural surroundings.

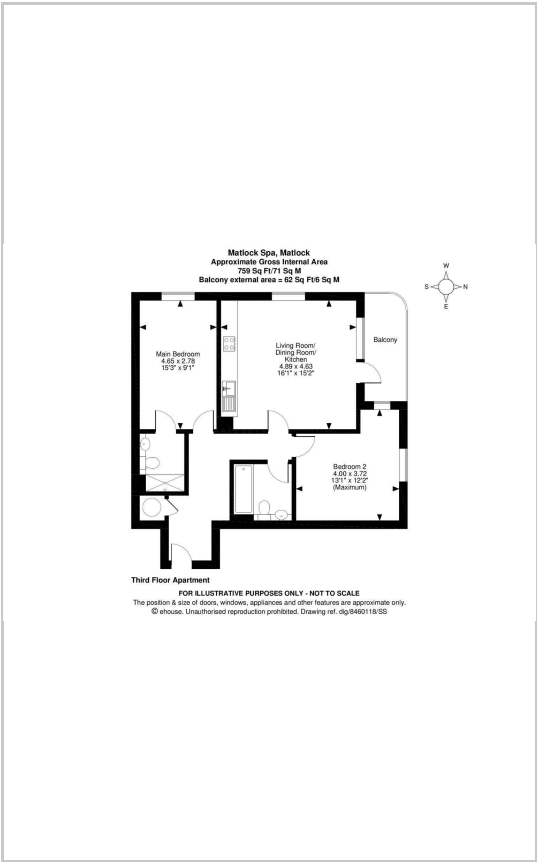




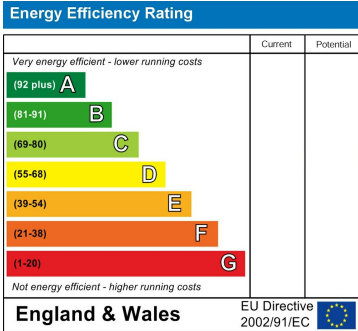
# Area Map



# Floor Plans



# Energy Efficiency Graph



These particulars, whilst believed to be accurate are set out as a general outline only for guidance and do not constitute any part of an offer or contract. Intending purchasers should not rely on them as statements of representation of fact, but must satisfy themselves by inspection or otherwise as to their accuracy. No person in this firms employment has the authority to make or give any representation or warranty in respect of the property.

The Newt, Denchworth Manor Hyde Road, Denchworth, Oxford, OX12 0DX  
 Tel: 07939 496551 Email: charles@charlesbartlett.co.uk www.charlesbartlett.co.uk