



Nevis Court, 1 Loch Crescent

Guide Price **£495,000**

The right property at the perfect moment.



Nevis Court, Edgware

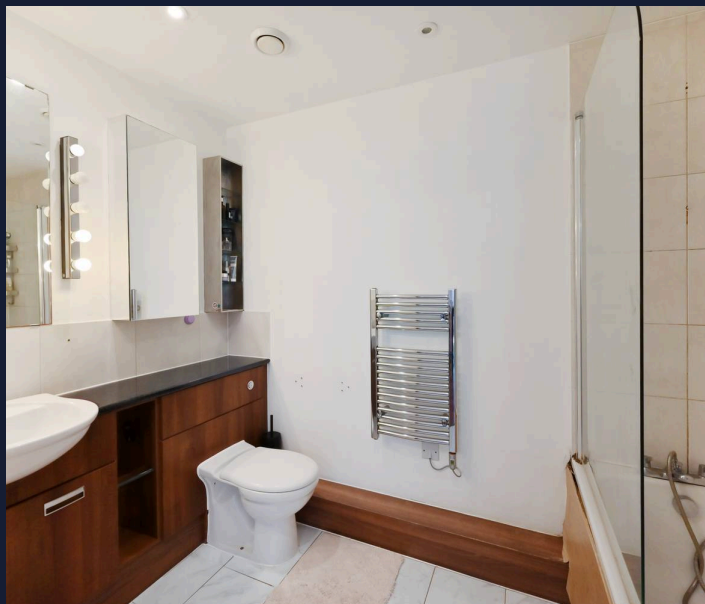
Stylish 1-bed apartment near Stanmore Station with 2 bathrooms, balcony, and underground parking. Contemporary design with high-quality finishes, ideal for modern urban living.
Council Tax band: TBD

Tenure: Leasehold

EPC Energy Efficiency Rating: B

EPC Environmental Impact Rating: A

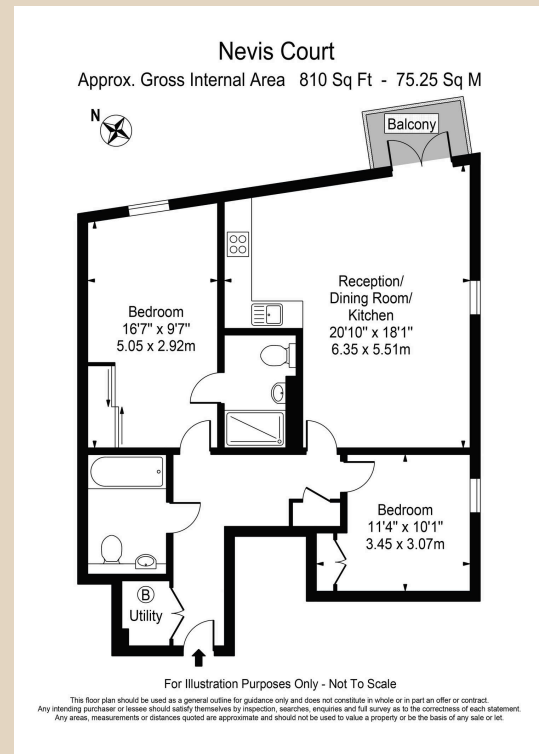
- Two Bedrooms
- 810 Sqft
- Balcony
- Two Bathrooms
- Stanmore Station
- Underground Parking



PRIME

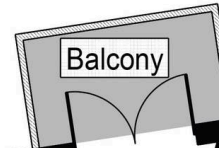
COLLECTION

Residential Sales & Lettings

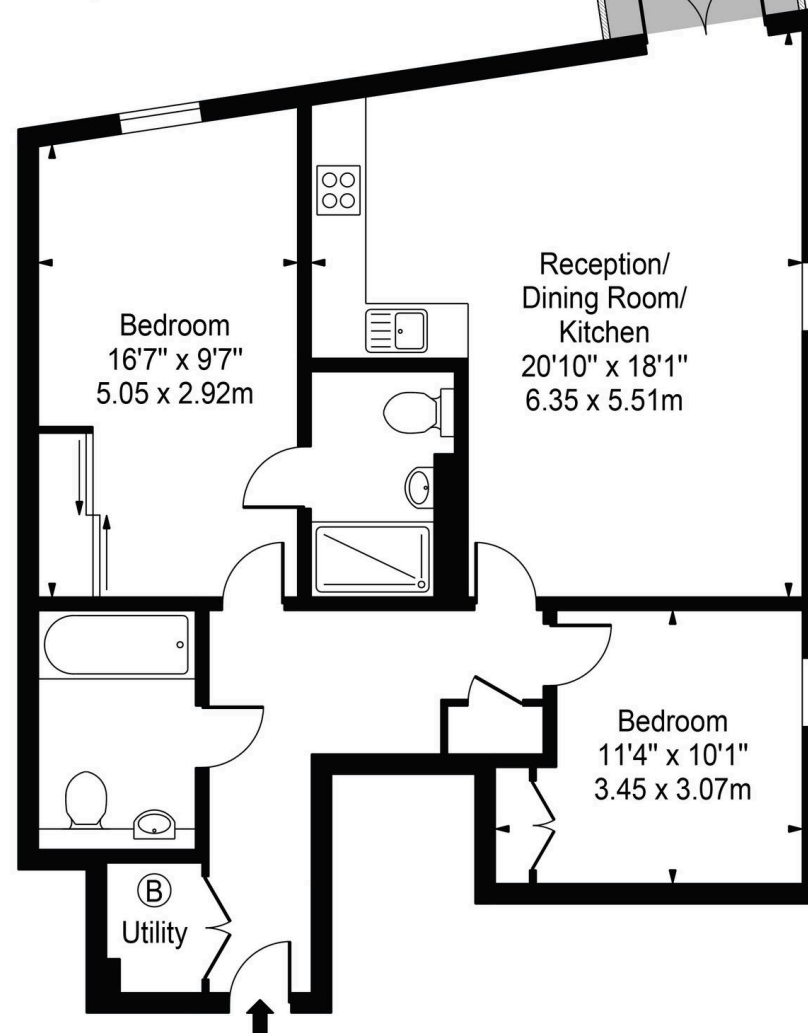


Nevis Court

Approx. Gross Internal Area 810 Sq Ft - 75.25 Sq M



Floorplan



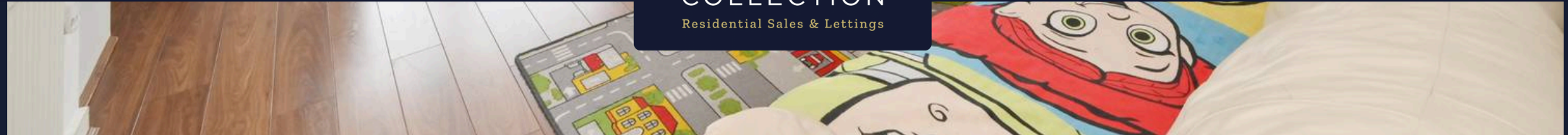
For Illustration Purposes Only - Not To Scale

This floor plan should be used as a general outline for guidance only and does not constitute in whole or in part an offer or contract. Any intending purchaser or lessee should satisfy themselves by inspection, searches, enquiries and full survey as to the correctness of each statement. Any areas, measurements or distances quoted are approximate and should not be used to value a property or be the basis of any sale or let.

*Opportunities don't wait...
Neither should you.*

Contact us today!

PRIME
COLLECTION
Residential Sales & Lettings



Prime Collection

18a Hanson Street, London - W1W 6UE

0207 081 4175 • hello@primecollection.co.uk • primecollection.co.uk/