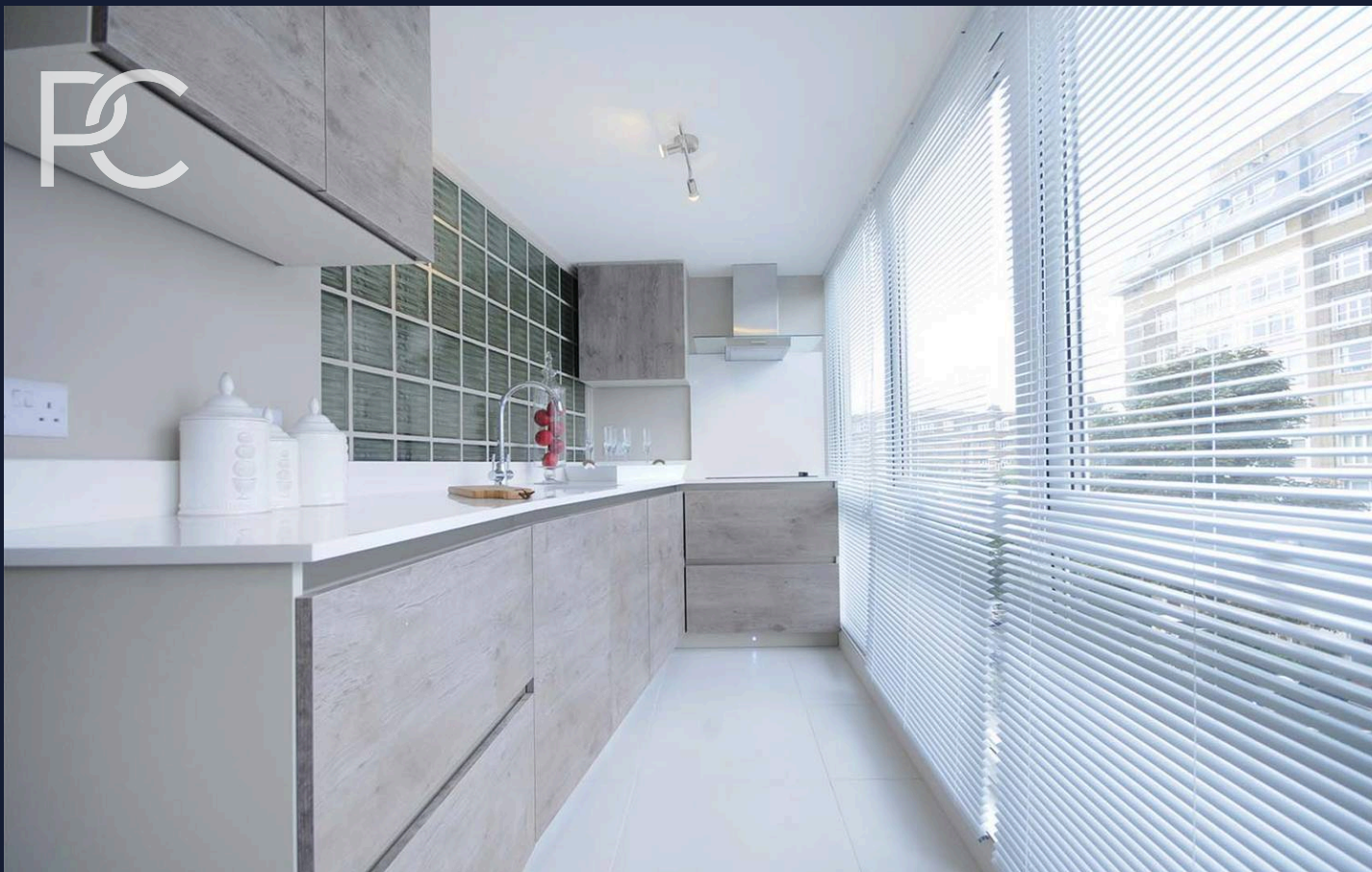


PRIME
COLLECTION
Residential Sales & Lettings



Boydell Court St. John's Wood , NW8
£5,634 pcm

The right property at the perfect moment.



Boydell Court St. John's Wood , NW8

Luxurious 3-bed flat in St. John's Wood with contemporary design. Dedicated concierge, favourable council tax, close to amenities. Ideal for sophisticated urban living in a prestigious neighbourhood.

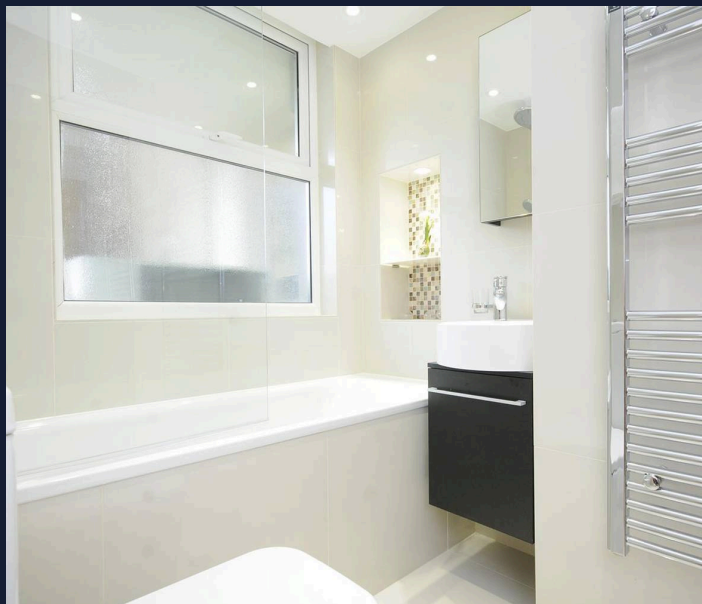
Council Tax band: F

Tenure: Leasehold

EPC Energy Efficiency Rating: C

EPC Environmental Impact Rating: D

- Concierge
- 3 Bedroom
- 3 Bathroom
- Interior designed
- Council Tax Band F
- St. John's Wood



PRIME

COLLECTION

Residential Sales & Lettings

*Opportunities don't wait...
Neither should you.*

Contact us today!

PRIME
COLLECTION
Residential Sales & Lettings



Prime Collection

18a Hanson Street, London - W1W 6UE

0207 081 4175 • hello@primecollection.co.uk • primecollection.co.uk