

**PRIME**  
COLLECTION  
Residential Sales & Lettings



Boydell Court, St. John's Wood, NW8  
£5,634 pcm

*The right property at the perfect moment.*





## Boydell Court, St. John's Wood, NW8

Stunning 3-bed flat in St. John's Wood, designed for luxury living. Features 3 modern baths, concierge service, close to amenities. Ideal for urban lifestyle seekers.

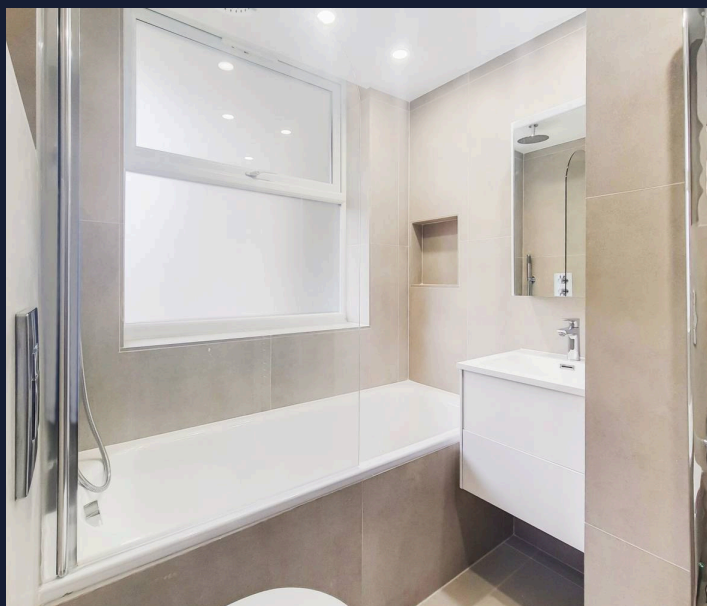
Council Tax band: F

Tenure: Leasehold

EPC Energy Efficiency Rating: C

EPC Environmental Impact Rating: C

- 3 Bedroom
- 3 Bathroom
- Concierge
- St. John's Wood
- Council Tax Band F
- Interior Designed



# PRIME

---

## COLLECTION

Residential Sales & Lettings

*Opportunities don't wait...  
Neither should you.*

Contact us today!

**PRIME**  
COLLECTION  
Residential Sales & Lettings



**Prime Collection**

18a Hanson Street, London - W1W 6UE

0207 081 4175 • [hello@primecollection.co.uk](mailto:hello@primecollection.co.uk) • [primecollection.co.uk](http://primecollection.co.uk)