



Grosvenor Hill, Mayfair, W1K
£4,819 pcm

The right property at the perfect moment.



Grosvenor Hill, Mayfair, W1K

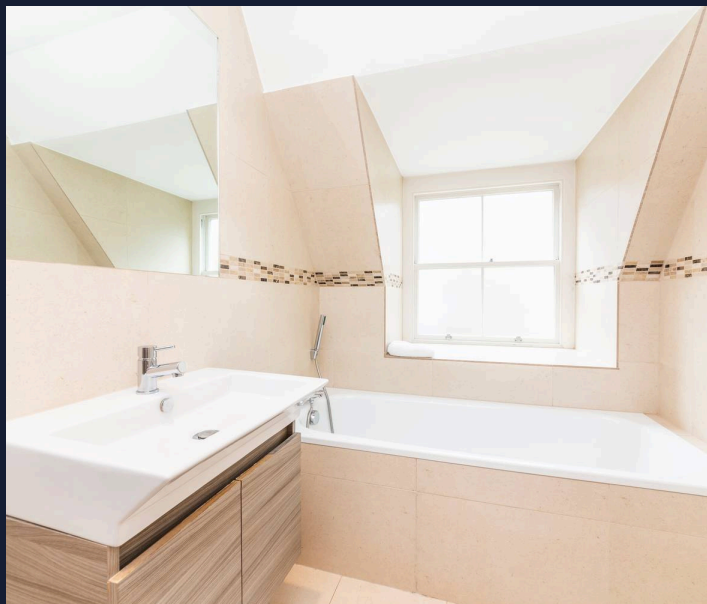
Stylish Mayfair apartment with designer finishes, double bedroom with en-suite, wood flooring, and prime location near Bond Street and Green Park. Ideal for central London living.

Council Tax band: G

EPC Energy Efficiency Rating: D

EPC Environmental Impact Rating: E

- Furnished/Unfurnished
- Interior Designed | Recently Refurbished
- Open Plan | Separate WC
- Central Mayfair Location | Pet Friendly
- CCTV | Key phone entry system | Superfast Broadband
- 24-Hour Emergency Helpline
- Available furnished or unfurnished



PRIME

COLLECTION

Residential Sales & Lettings



FLAT 4,
9 - 10 GROSVENOR HILL, W1
Approx. Gross Internal Area *

712 Ft² - 66.14 M²
*As Defined by RICS - Code of Measuring Practice



FOURTH FLOOR

BKR

www.bkrfloorplans.co.uk
T. 01452 271233
© BKR 2018

*Opportunities don't wait...
Neither should you.*

Contact us today!

PRIME
COLLECTION
Residential Sales & Lettings



Prime Collection

18a Hanson Street, London - W1W 6UE

0207 081 4175 • hello@primecollection.co.uk • primecollection.co.uk