

**PRIME**  
COLLECTION  
Residential Sales & Lettings



37 St. Annes Road, Whitstable

Guide Price £1,500,000

*The right property at the perfect moment.*





37 St. Annes Road

Whitstable, Whitstable

Council Tax band: G

Tenure: Freehold

EPC Energy Efficiency Rating: D

EPC Environmental Impact Rating: D

- Family Detached Home
- Moments from the Sea
- 6 Bed 4 Bath
- Beautifully Presented
- Large Private Garden
- Separate Chalet Bungalow

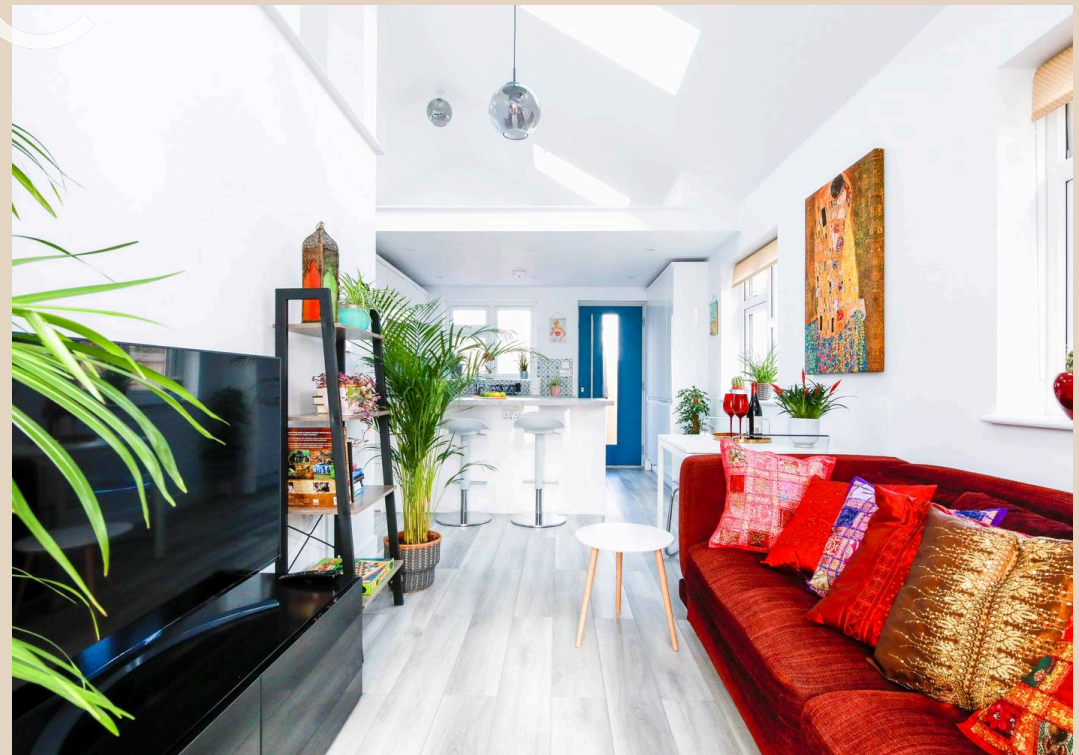


# PRIME

## COLLECTION

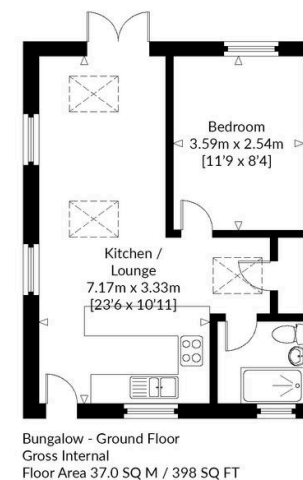
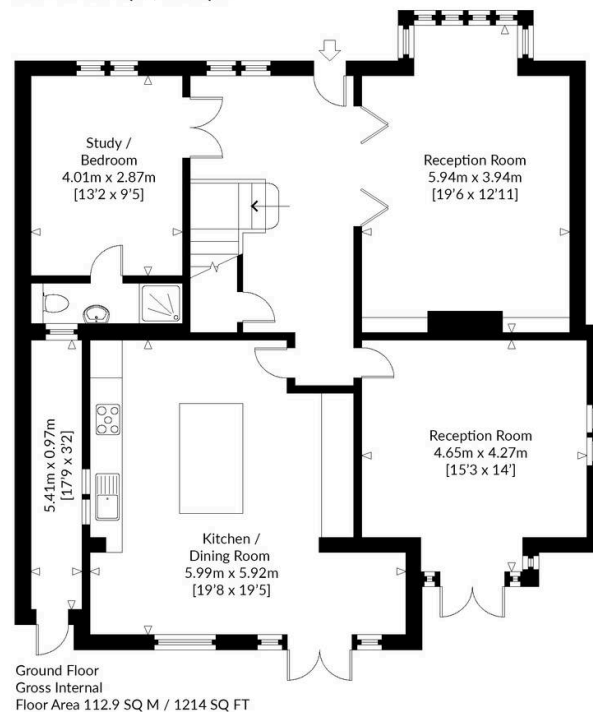
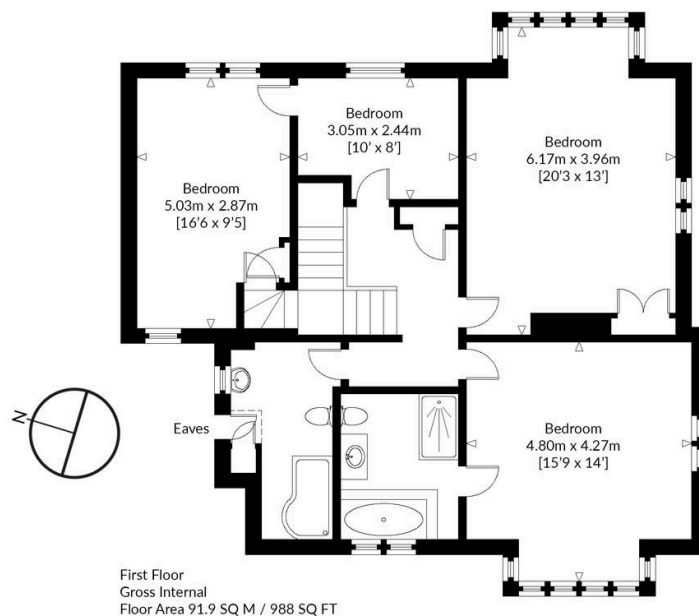
Residential Sales & Lettings







# Floorplan



ST ANNES ROAD  
NOT TO SCALE - FOR ILLUSTRATIVE PURPOSES ONLY  
MAIN HOUSE - APPROXIMATE GROSS INTERNAL FLOOR AREA 204.8 SQ M / 2202 SQ FT  
BUNGALOW - APPROXIMATE GROSS INTERNAL FLOOR AREA 37.0 SQ M / 398 SQ FT  
All measurements and fixtures including doors and windows  
are approximate and should be independently verified.



*Opportunities don't wait...  
Neither should you.*

Contact us today!

**PRIME**  
COLLECTION  
Residential Sales & Lettings

## Prime Collection

18a Hanson Street, London - W1W 6UE

0207 081 4175 • [hello@primecollection.co.uk](mailto:hello@primecollection.co.uk) • [primecollection.co.uk/](https://primecollection.co.uk/)