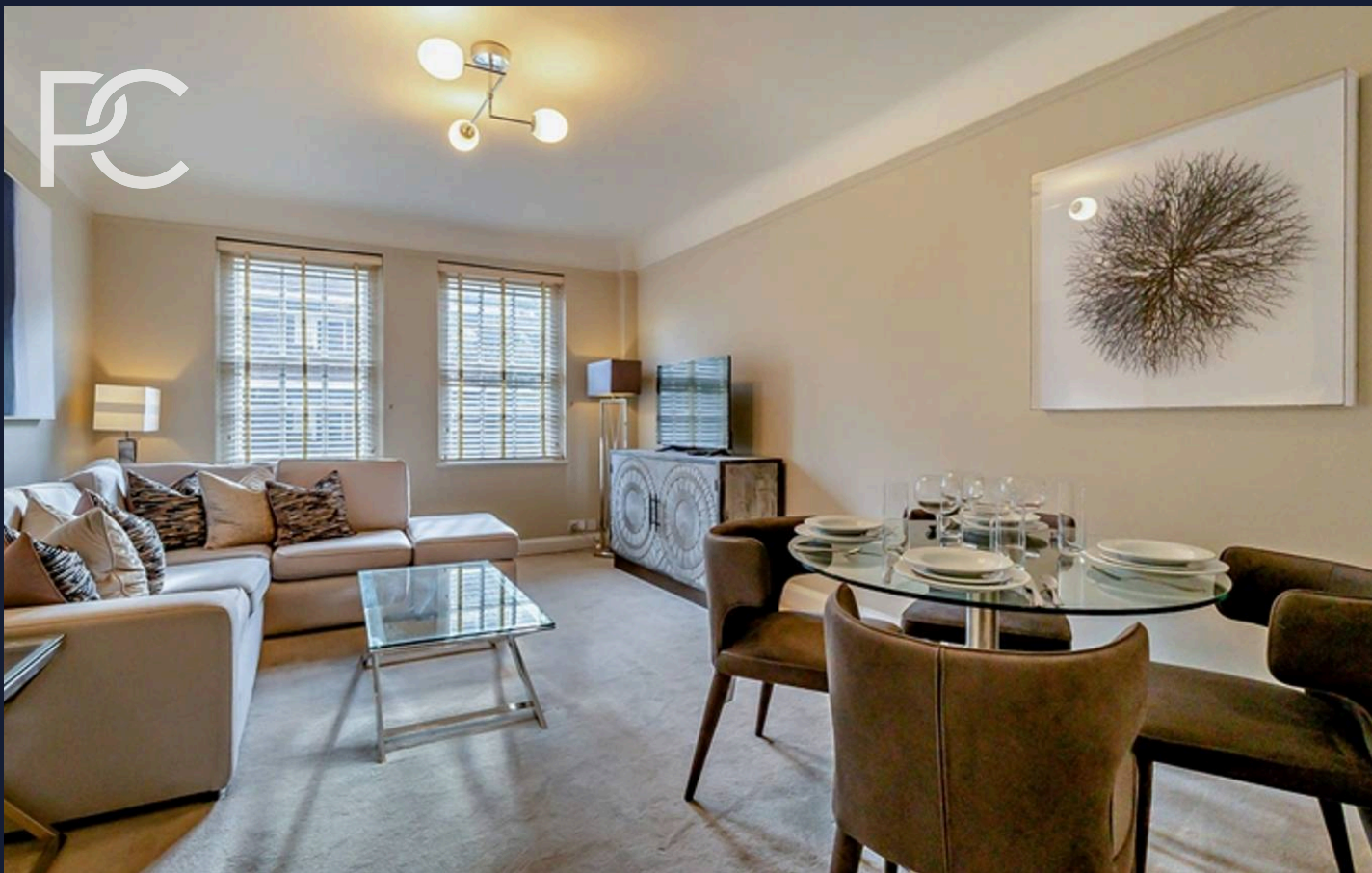




Pelham Court, South Kensington, SW1W  
£4,550 pcm

*The right property at the perfect moment.*





## Pelham Court, South Kensington, SW1W

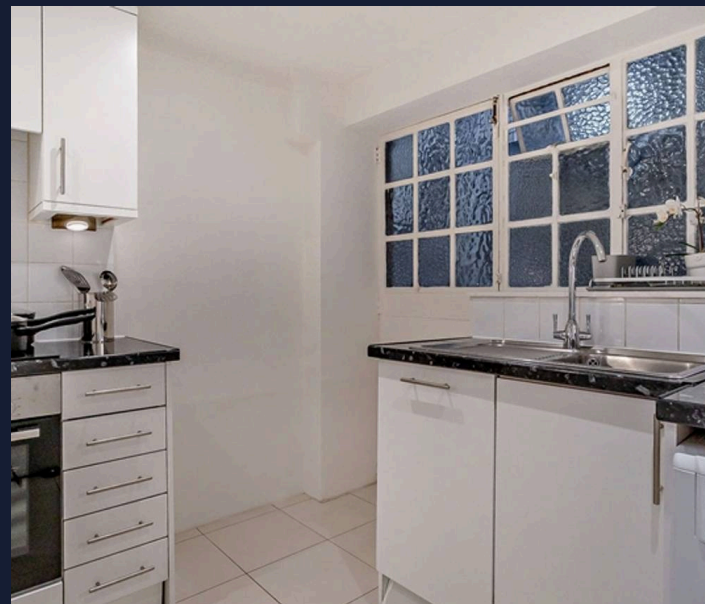
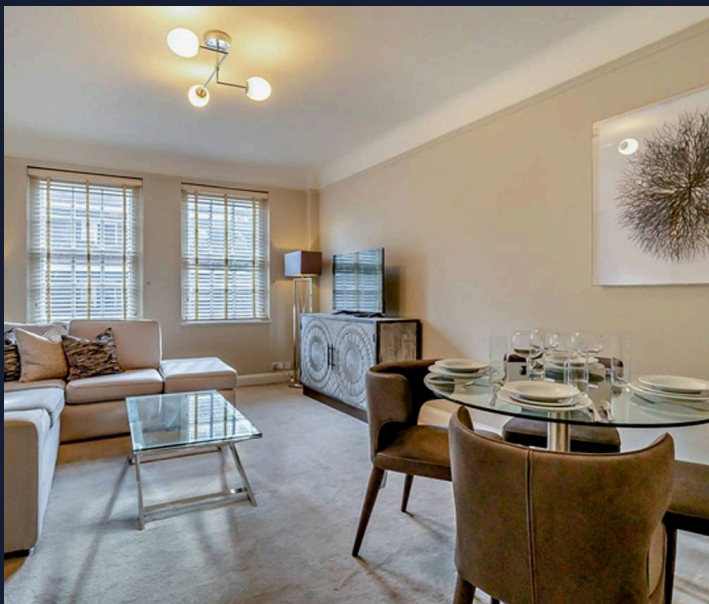
Spacious newly decorated 2 double bedroom apartment in Chelsea. Features reception/dining room, communal garden views, 2 bathrooms. Rent furnished/unfurnished. Council Tax band: G

Tenure: Leasehold

EPC Energy Efficiency Rating: C

EPC Environmental Impact Rating: G

- Central Chelsea Location
- Porter Service
- View Over Residents Private Gardens
- Dedicated Property Manager
- 24 Hour Emergency Helpline & Service
- Walking distance to South Kensington & Kings Road
- COUNCIL TAX BAND G
- EPC RATING C



# PRIME

---

## COLLECTION

Residential Sales & Lettings





*Opportunities don't wait...  
Neither should you.*

Contact us today!

**PRIME**  
COLLECTION  
Residential Sales & Lettings



## Prime Collection

18a Hanson Street, London - W1W 6UE

0207 081 4175 • [hello@primecollection.co.uk](mailto:hello@primecollection.co.uk) • [primecollection.co.uk](http://primecollection.co.uk)