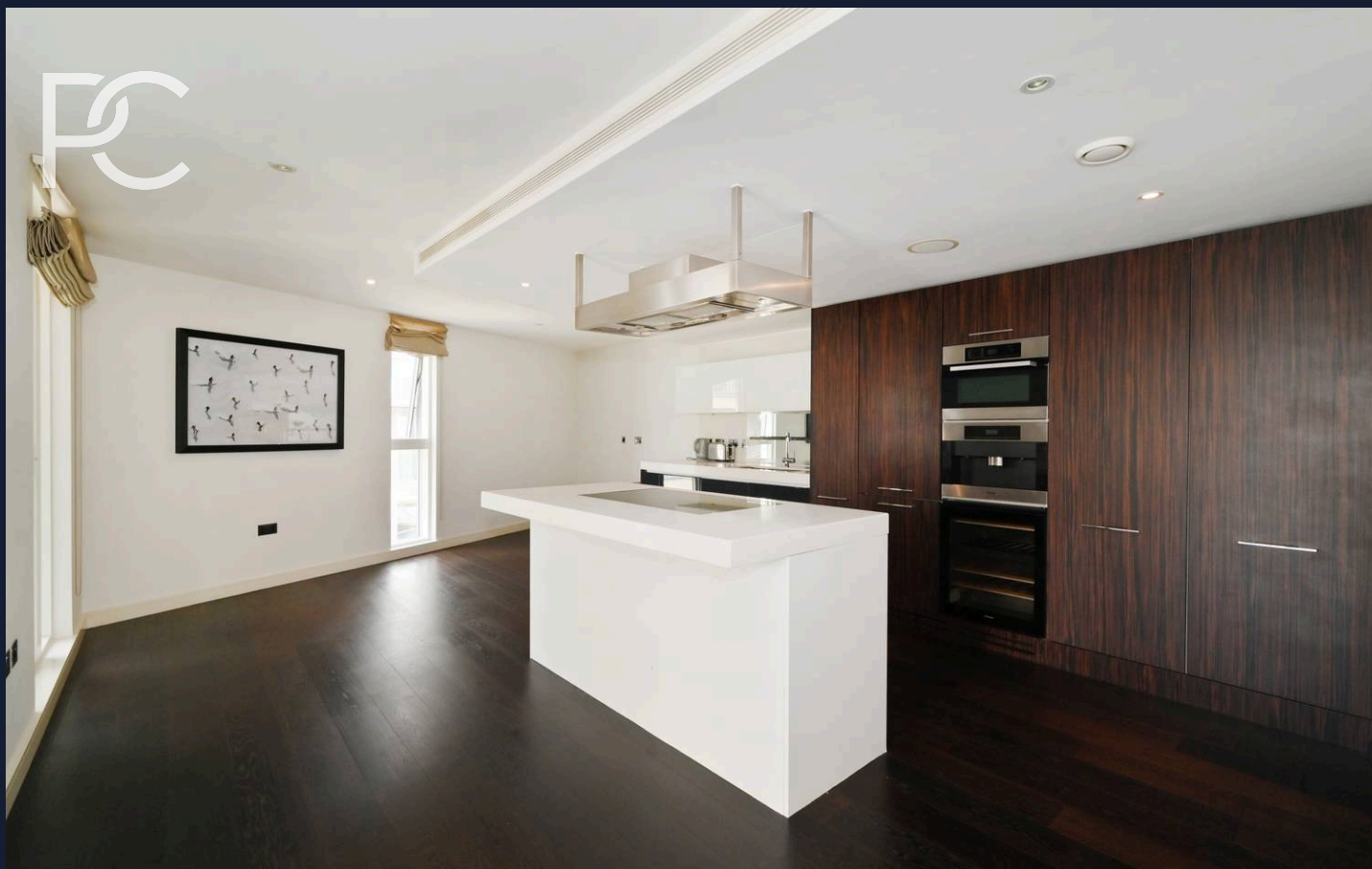




Moore House, Chelsea Bridge, SW1W  
£6,250 pcm

*The right property at the perfect moment.*



## Moore House, Chelsea Bridge, SW1W

Luxurious living in Grosvenor Water Development! Contemporary 3-bed apartment with sleek design, cutting-edge cooling system, 24-hour concierge, underground parking by negotiation. Ideal for discerning homeowners seeking a chic urban retreat. Council Tax band: G

Tenure: Leasehold

EPC Energy Efficiency Rating: B

EPC Environmental Impact Rating: B

- Grosvenor Water Development
- Secure underground Parking by separate negotiation
- 24 Hour Concierge
- Fourth Floor
- Cooling System
- Modern Building



# PRIME

---

## COLLECTION

Residential Sales & Lettings

*Opportunities don't wait...  
Neither should you.*

Contact us today!

**PRIME**  
COLLECTION  
Residential Sales & Lettings



**Prime Collection**

18a Hanson Street, London - W1W 6UE

0207 081 4175 • [hello@primecollection.co.uk](mailto:hello@primecollection.co.uk) • [primecollection.co.uk](http://primecollection.co.uk)