



B, 25 Gosfield Street, London  
London

Guide Price £1,295,000

**PRIME**  
COLLECTION  
Residential Sales & Lettings



## B, 25 Gosfield Street

London, London

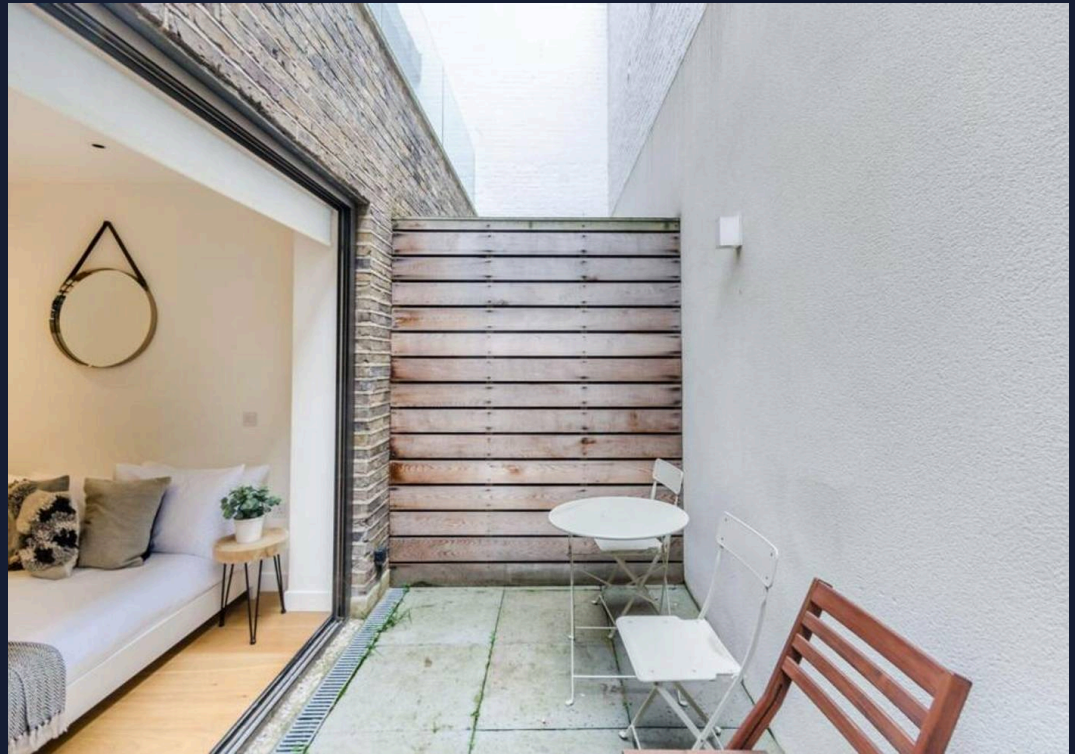
Stylish 2-bed apartment in Fitzrovia, 865 sqft, contemporary design with patio and balcony. Ideal location with great transport links near Regents Park. Perfect urban living in vibrant area.  
Council Tax band: TBD

Tenure: Leasehold

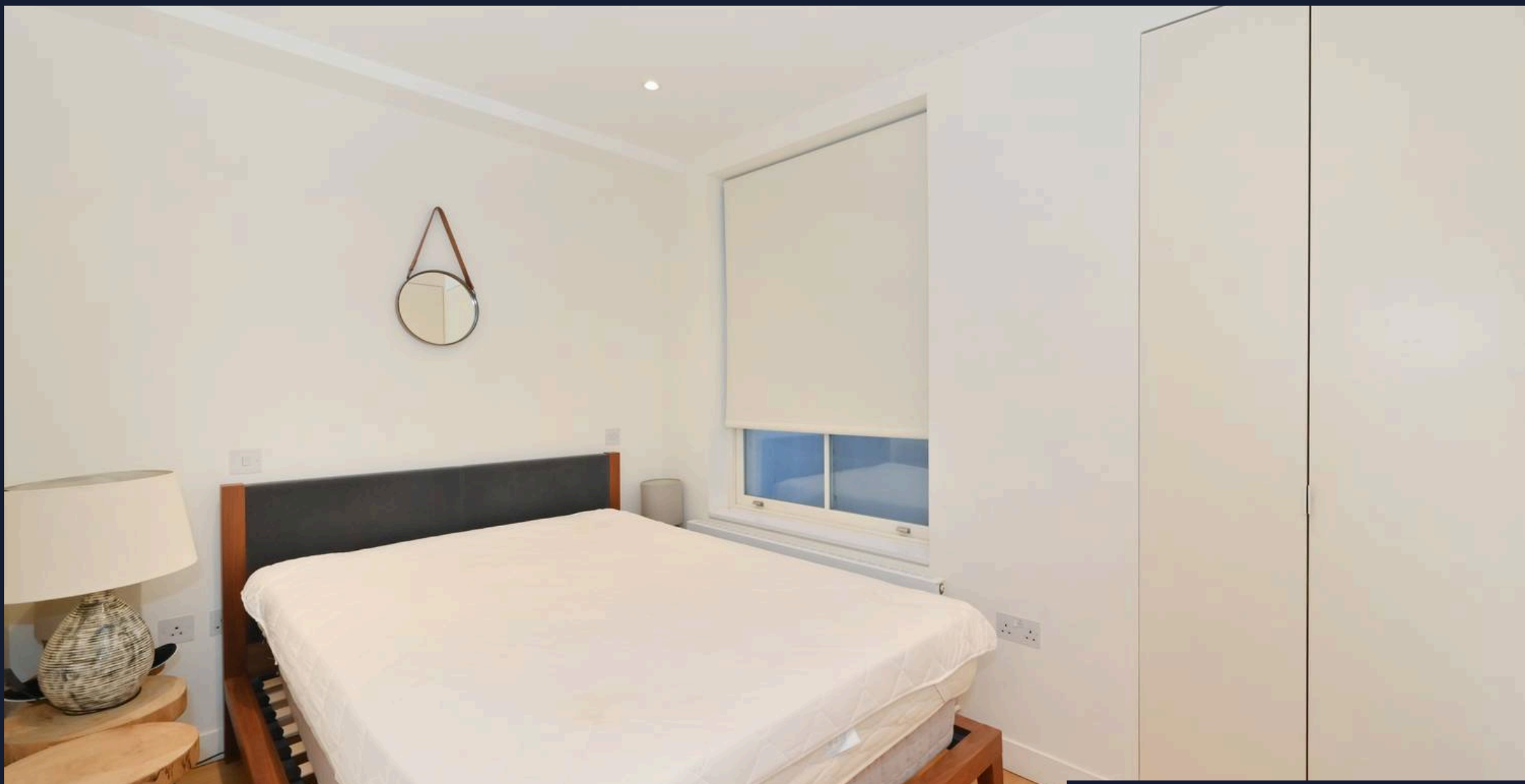
- Two Bedrooms Two Bathrooms
- Amazing Transport Links
- Walking Distance from Regents Park
- Contemporary Design
- Prime Location
- Private Patio











## Prime Collection

18a Hanson Street, London – W1W 6UE

0207 081 4175

[hello@primecollection.co.uk](mailto:hello@primecollection.co.uk)

[primecollection.co.uk/](http://primecollection.co.uk/)

**PRIME**  

---

**COLLECTION**  
Residential Sales & Lettings