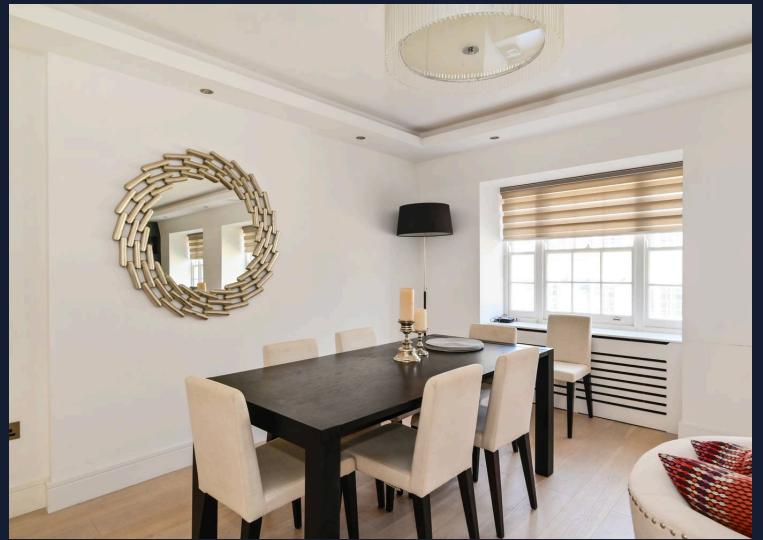


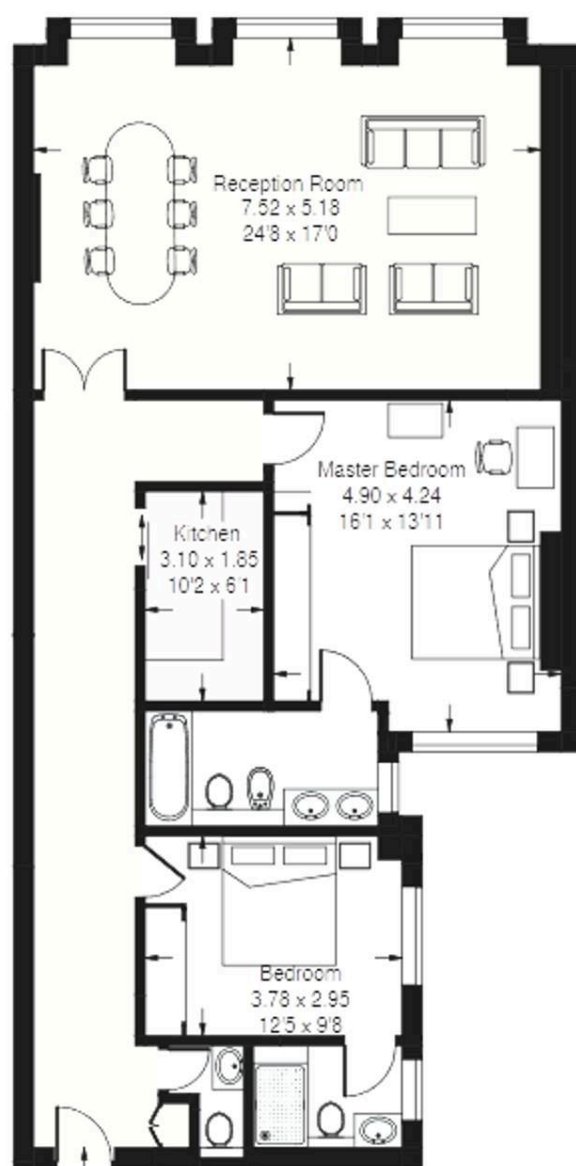
Flat 15, 42 Upper Brook Street, London

Two Bed Two Bath • Concierge • Mayfair • Grosvenor Square • Hyde Park • Bright 5th Floor Apartment with Lift



Upper Brook Street, W1

Approx. Gross Internal Area
112.1 sq m / 1206 sq ft



Fifth Floor

Whilst every attempt has been made to ensure the accuracy of the floor plan, measurements are approximate and not to scale.
No guarantee is given on the total square footage of the property quoted on the plan. Figures given are for guidance.
Plan is for illustration purposes only.