



Flat 6, Copperfield House, 52 Marylebone High Street

Guide Price £1,150,000

*The right property at the perfect moment.*





## Flat 6

Copperfield House, London

Rare opportunity to acquire a stunning property on Marylebone High St. Elegant 2-bed, 2-bath abode with Share of Freehold & 900+ year lease. Includes underground parking. Perfect blend of comfort & style in prime location, ideal for cosmopolitan lifestyle in prestigious Marylebone.

Council Tax band: F

Tenure: Leasehold

- Share Of Freehold
- 900+ year lease
- Marylebone High Street
- Amazing Location
- Underground Parkingspace
- 2 Bedrooms 2 Bathrooms



**PRIME**

---

**COLLECTION**

Residential Sales & Lettings





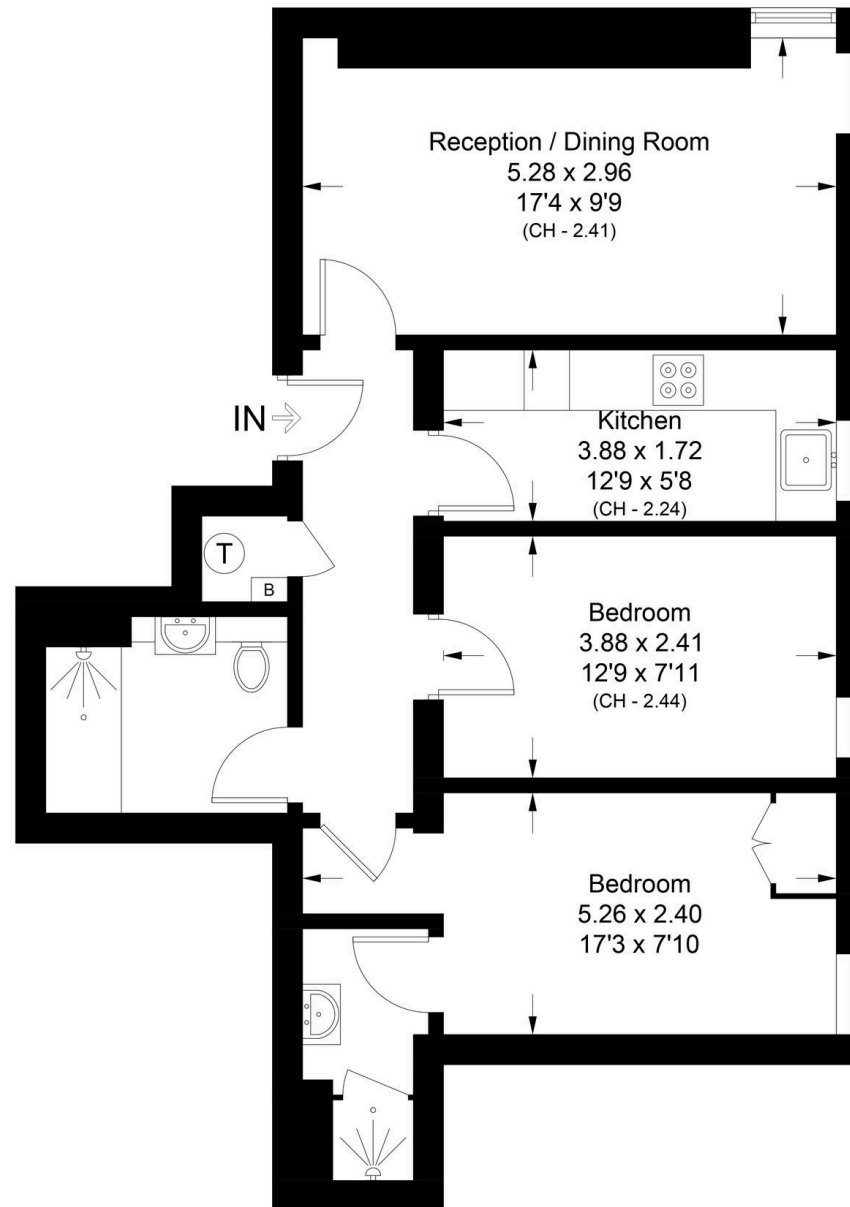
PC

# Copperfield House, Marylebone High Street, W1U

Approximate Area = 60.3 sq m / 649 sq ft



*Floorplan*



## Raised Ground Floor

Surveyed and drawn in accordance with the International property measurements standards (IPMS 2: Residential) Not drawn to scale unless stated.  
Whilst every care is taken in the preparation of this plan, please check all dimensions, shapes and compass bearings before making any decisions reliant upon them.



*Opportunities don't wait...  
Neither should you.*

Contact us today!

**PRIME**  
COLLECTION  
Residential Sales & Lettings



**Prime Collection**

18a Hanson Street, London - W1W 6UE

0207 081 4175 • [hello@primecollection.co.uk](mailto:hello@primecollection.co.uk) • [primecollection.co.uk/](http://primecollection.co.uk/)