



Peter Barry
working harder for you

Tel: 020 8360 4777
www.pbea.co.uk



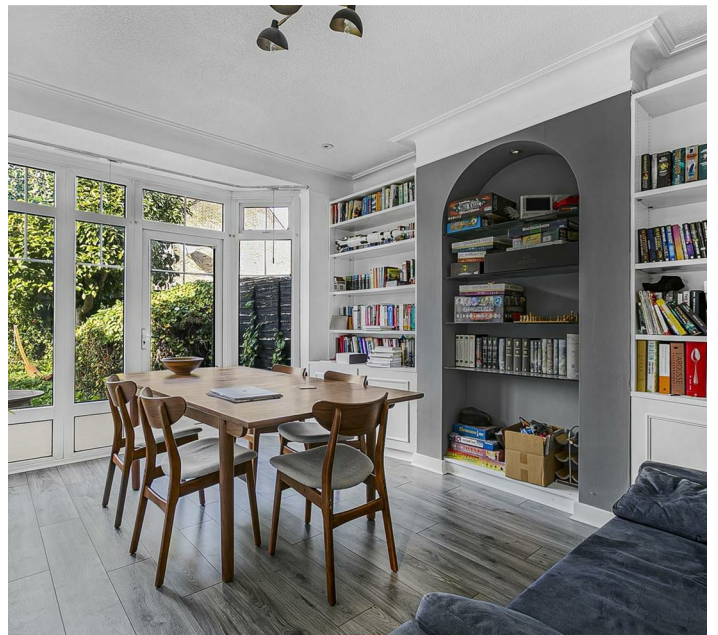
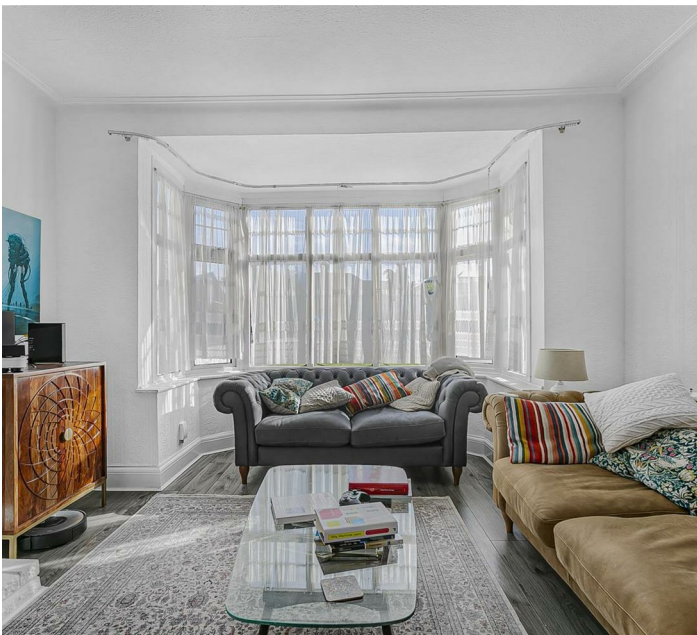
Ridge Avenue, Winchmore Hill, N21 2AU

Peter Barry Estate Agents proudly present this exceptional three-bedroom family home, perfectly positioned in the heart of Winchmore Hill. Offering generous living space, this bright and airy property is the ideal choice for a growing family.

This home truly combines space, comfort, and location, making it a fantastic opportunity for families looking to settle in this sought-after area.

- Chain free
- Garage
- Separate WC
- Potential to extend (STPP)
- 0.9 miles to the station
- Close to local shops

£725,000



Energy Efficiency Rating		Current	Potential
<i>Very energy efficient - lower running costs</i>			
(92 plus)	A		
(81-91)	B		84
(69-80)	C	65	
(55-68)	D		
(39-54)	E		
(21-38)	F		
(1-20)	G		
<i>Not energy efficient - higher running costs</i>			
England & Wales		EU Directive 2002/91/EC	