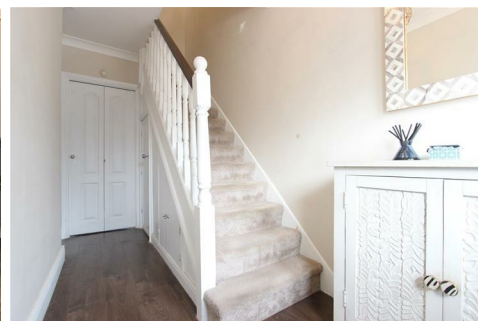




Peter Barry
working harder for you

Tel: 020 8360 4777
www.pbea.co.uk



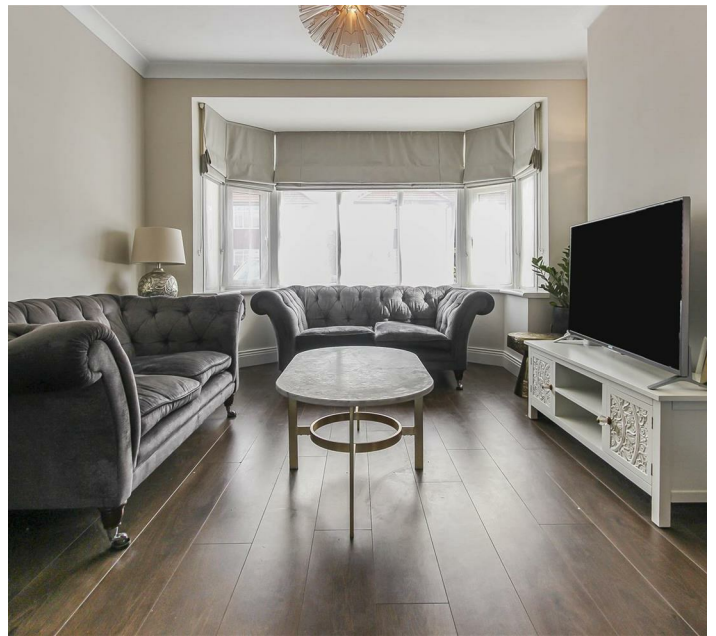
New Park Avenue, Palmers Green, London, N13 5NB

Peter Barry are delighted to offer this exceptional three bedroom extended family home situated on a very sought after road and perfectly positioned for local transport and great schools.

This stunning house has been meticulously maintained and improved by its current owners, with modern fully fitted kitchen & bathroom.

- Chain free
- Off street parking
- Catchment for Firs Farm Primary school
- Extended to the rear
- Good road links, A10 & A406 close by
- Garage
- Downstairs cloakroom
- Double glazed and central heated

£600,000



Energy Efficiency Rating		Current	Potential
<i>Very energy efficient - lower running costs</i>			
(92 plus) A			<div style="text-align: center;"> 87 </div>
(81-91) B		<div style="text-align: center;"> 73 </div>	
(69-80) C			
(55-68) D			
(39-54) E			
(21-38) F			
(1-20) G			
<i>Not energy efficient - higher running costs</i>			
England & Wales		EU Directive 2002/91/EC	