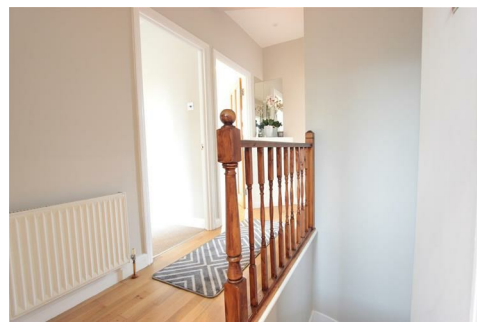
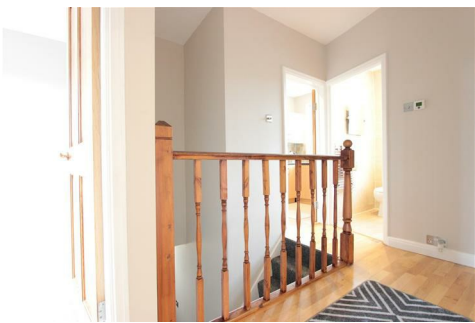




Peter Barry
working harder for you

Tel: 020 8360 4777
www.pbea.co.uk



Nestor Avenue, Winchmore Hill, London, N21 2HE

Peter Barry are delighted to offer this wonderful two double bedroom first floor purpose built maisonette situated on a quiet Cul de sac near numerous transport links.

This property boasts it's own entrance, double glazing, a built in kitchen and a lovely, good sized private garden.

Give our Lettings Team a call today to arrange a Viewing!

- Two Double Bedroom
- Double Glazing
- Large Garden
- Close to Transport Links
- Nearby to the Nation Rail Line

£1,650 PCM



Energy Efficiency Rating		
	Current	Potential
<i>Very energy efficient - lower running costs</i>		
(92 plus) A		
(81-91) B		
(69-80) C		
(55-68) D		
(39-54) E		
(21-38) F		
(1-20) G		
<i>Not energy efficient - higher running costs</i>		
England & Wales	EU Directive 2002/91/EC	