



Peter Barry
working harder for you

Tel: 020 8360 4777
www.pbea.co.uk



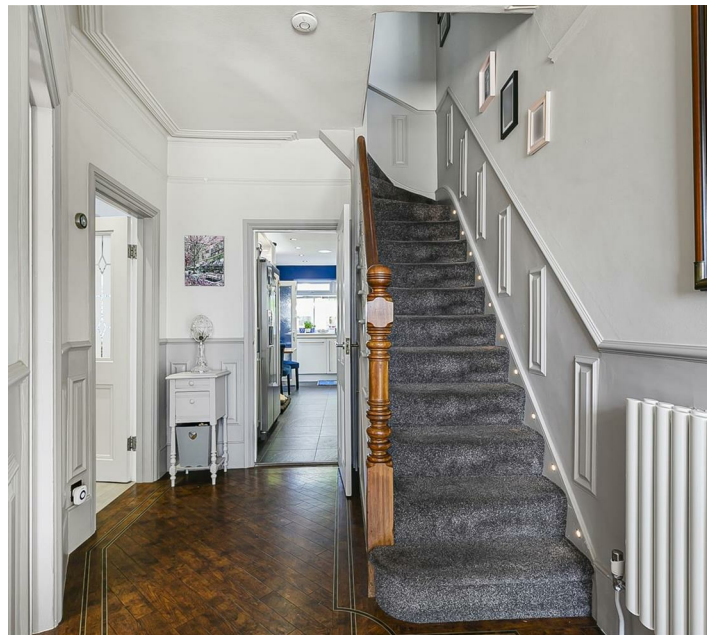
Ridge Road, London, N21 3EL


Peter Barry are delighted to offer this truly stunning Four bedroom, two bathroom, semi detached Edwardian family home, set on one of Winchmore Hills more popular Roads.

This amazing house boasts a plethora of both modern and original features and has been very much improved by its current owners with the loft and rear of the house extended.

- Edwardian character property
- 0.8 miles to Winchmore Hill station
- Summer house/office work from home space
- Catchment area to great schools
- Walk in wardrobe to master bedroom
- Chain free
- Two good size reception rooms
- Two modern bathrooms
- Modern fully fitted kitchen

£869,950



| Energy Efficiency Rating | | Current | Potential |
|--|---|---|-----------|
| <i>Very energy efficient - lower running costs</i> | | | |
| (92 plus) | A | | |
| (81-91) | B | | 80 |
| (69-80) | C | | |
| (55-68) | D | 56 | |
| (39-54) | E | | |
| (21-38) | F | | |
| (1-20) | G | | |
| <i>Not energy efficient - higher running costs</i> | | | |
| England & Wales | | EU Directive 2002/91/EC  | |

946 Green Lanes, Winchmore Hill, London, Greater London, N21 2AD
 Tel: 020 8360 4777 Email: info@pbea.co.uk <https://www.pbea.co.uk>