



3 Bedroom House - Semi-Detached
located on Bennetts Road South,
Coventry
£375,000

UP Estates

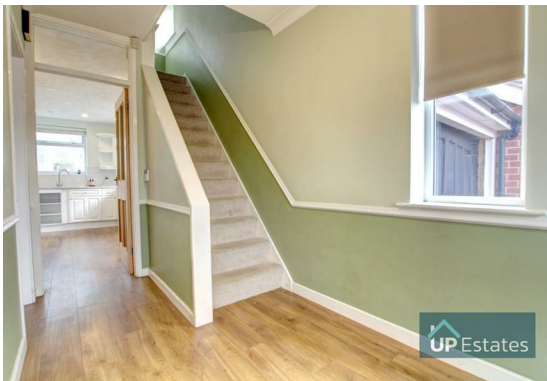


****NO CHAIN - SPACIOUS SEMI - GREAT PLOT - AMPLE PARKING AND CHECK OUT THE REAR GARDEN - DOWNSTAIRS WC - TWO GREAT RECEPTION ROOM AREAS**** Well proportioned and well maintained family home situated in the sought after area of Keresley, just on the edge of Coventry with nearby rural fields, walks and access via country lanes to Birmingham airport, as well as a host of shops, schools, road networks, public transport and amenities on your doorstep. In brief comprising: Entrance Hall, Living/Dining Room, Conservatory, Cloakroom, Utility, Fitted Kitchen, Three Bedrooms and Family Bathroom. There is a Generous Driveway to the Front, Carport, Double Length Garage and an Extensive Rear Garden which should be viewed to fully appreciate.

£375,000

- NO CHAIN
- Spacious Semi Detached
- Three Bedrooms
- Conservatory Reception Room onto Garden
- Downstairs WC
- Ample Driveway Parking & Garage & Car Port
- Check Out The Rear Garden
- Sought After Spot On Edge of Coventry









Bennetts Road South, Coventry





Total Area: 140.0 m² ... 1507 ft²

All measurements are approximate and for display purposes only

CONTACT

Up Estates,
11 Dugdale Street
Nuneaton
Warwickshire
CV11 5QJ

E: enquiries@upestates.co.uk
T: 024 7771 0790

UP Estates