



4 Bed House - Semi-Detached
located in



60 Mason Avenue
Leamington Spa
CV32 7PF

4

4

1

D

Asking Price £312,000

CONTACT

Office 1H
Valiant Office Suites
Lumonics House
Valley Drive, Rugby
Warwickshire
CV21 1TQ

EMAIL

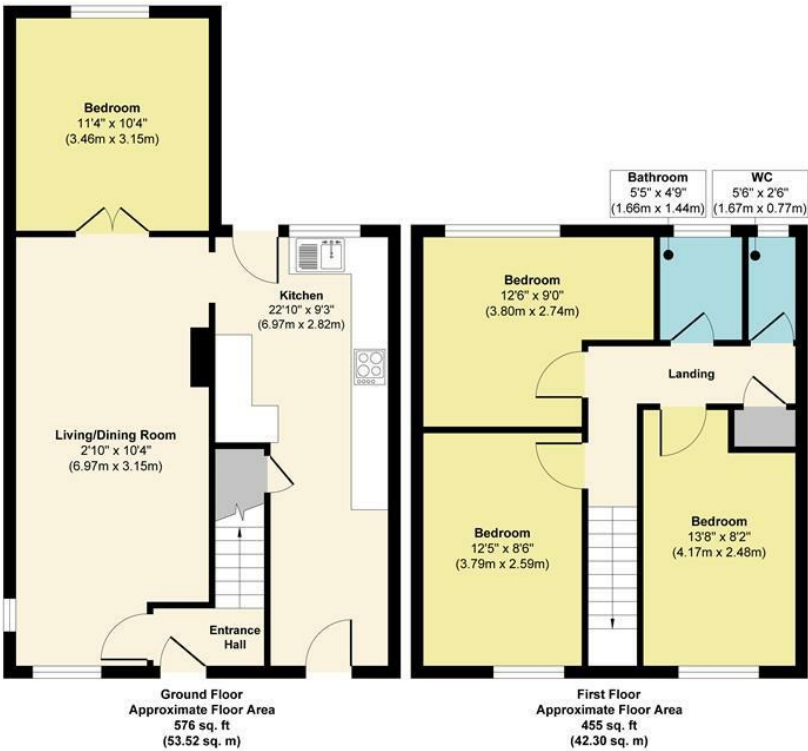
sales@acdc.agency

TELEPHONE

0333 335 5445

<http://www.acdcsalesandlettings.co.uk>

60 Mason Avenue



Approx. Gross Internal Floor Area 1031 sq. ft / 95.82 sq. m
Illustration for identification purposes only, measurements are approximate, not to scale.
Produced by Elements Property

SUMMARY

Nestled in the charming area of Mason Avenue, Leamington Spa, this delightful property offers a perfect blend of modern living and traditional comfort. This residence boasts four well-proportioned bedrooms, making it an ideal home for families or those seeking extra space.

