

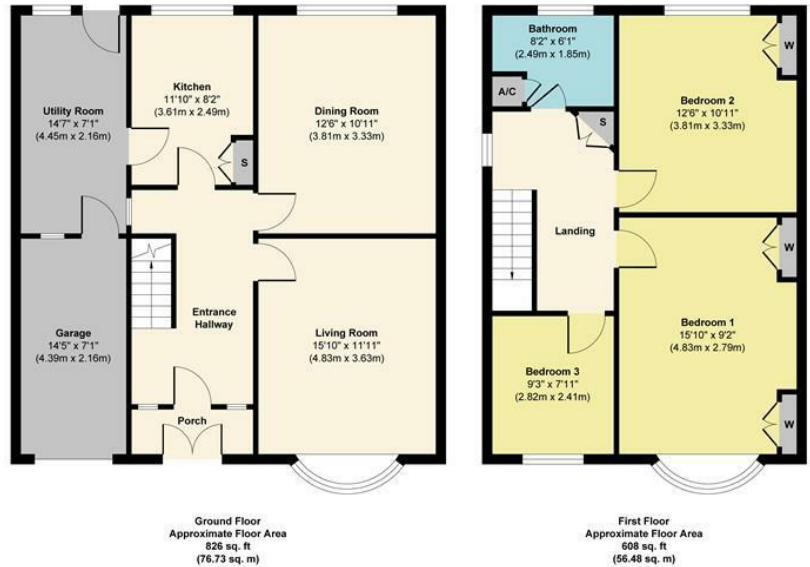


3 Bed House - Semi-Detached  
located in



29 Britwell Road  
Sutton Coldfield  
B73 5SN

29 Britwell Road



Approx. Gross Internal Floor Area 1434 sq. ft / 133.21 sq. m  
Illustration for identification purposes only, measurements are approximate, not to scale.  
Produced by Elements Property

Guide Price £425,000

CONTACT

Office 1H  
Valiant Office Suites  
Lumonics House  
Valley Drive, Rugby  
Warwickshire  
CV21 1TQ

EMAIL

sales@acdc.agency

TELEPHONE

0333 335 5445

<http://www.acdcsalesandlettings.co.uk>

SUMMARY

Wow... take a look at this stunning traditional style three bedroom semi detached family home which is situated just a stones throw from Boldmere high street. This property really must be viewed to be appreciated!

Energy Efficiency Rating		Current	Potential
Very energy efficient - lower running costs			
(92 plus) A			
(81-91) B			
(69-80) C			
(55-68) D			
(39-54) E			
(21-38) F			
(1-20) G			
Not energy efficient - higher running costs			
England & Wales		EU Directive 2002/91/EC	