



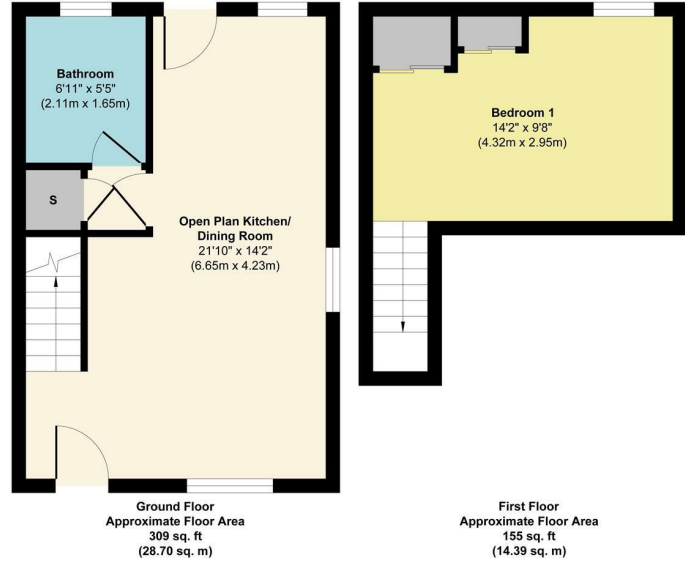
1 Bed House - End Terrace  
located in



**19 The Pollards**  
**Birmingham**  
**B23 5JR**



19 The Pollards



Approx. Gross Internal Floor Area 464 sq. ft / 43.09 sq. m  
Illustration for identification purposes only, measurements are approximate, not to scale.  
 Produced by Elements Property

Offers Over £100,000

**CONTACT**

Office 1H  
 Valiant Office Suites  
 Lumonics House  
 Valley Drive, Rugby  
 Warwickshire  
 CV21 1TQ

**EMAIL**

sales@acdc.agency

**TELEPHONE**

0333 335 5445

<http://www.acdcsalesandlettings.co.uk>

**SUMMARY**

Take a look at this brilliantly situated one bedroom end of terraced Mezzanine style house/bungalow. This property has a rear garden, garage and driveway!

Energy Efficiency Rating		Current	Potential
Very energy efficient - lower running costs			
(92 plus) <b>A</b>			
(81-91) <b>B</b>			
(69-80) <b>C</b>			
(55-68) <b>D</b>			
(39-54) <b>E</b>			
(21-38) <b>F</b>			
(1-20) <b>G</b>			
Not energy efficient - higher running costs			
<b>England &amp; Wales</b>		EU Directive 2002/91/EC	