

2 Bed House - End Terrace  
located in



88 Holborn Avenue  
 Nottingham  
 NG2 4LZ



Offers Over £150,000

**CONTACT**

Office 1H  
 Valiant Office Suites  
 Lumonics House  
 Valley Drive, Rugby  
 Warwickshire  
 CV21 1TQ

**EMAIL**

sales@acdc.agency

**TELEPHONE**

0333 335 5445

<http://www.acdcsalesandlettings.co.uk>

88 Holborn Avenue

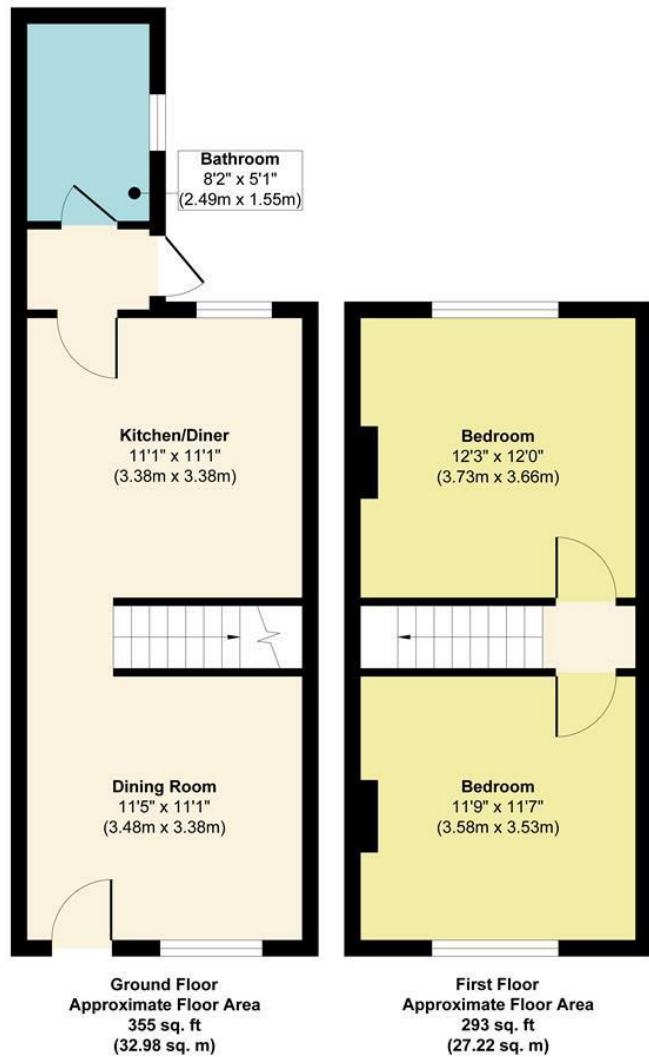


Illustration for identification purposes only, measurements are approximate, not to scale.  
 Produced by Elements Property

**SUMMARY**

\*\*\*\* OPEN HOUSE MONDAY 17TH JUNE \*\*\*\*

Take a look at this immaculately presented two bedroom end-terraced property which is situated within close proximity of Nottingham city centre! This property would make the perfect first time buy or investment!

