



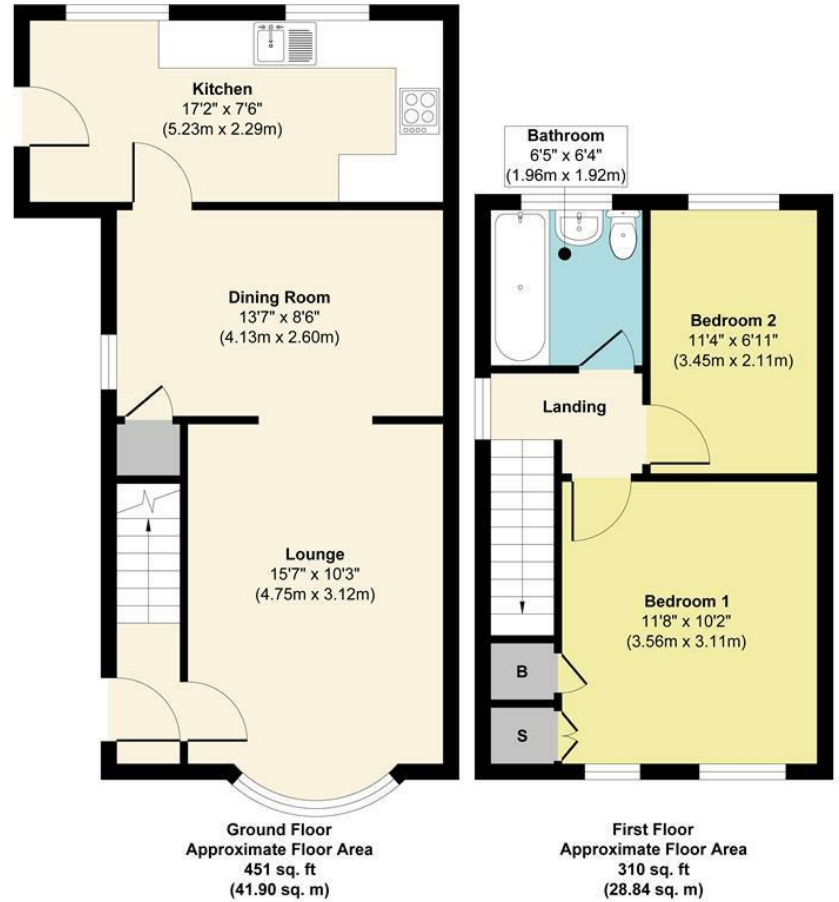
**2 Bed Not specified
located in**



**28 Grebe Close
Birmingham
B23 7RW**



28 Grebe Close



Approx. Gross Internal Floor Area 761 sq. ft / 70.74 sq. m
 Illustration for identification purposes only, measurements are approximate, not to scale.
 Produced by Elements Property

Asking Price £199,950

CONTACT

Office 1H
 Valiant Office Suites
 Lumonics House
 Valley Drive, Rugby
 Warwickshire
 CV21 1TQ

EMAIL

sales@acdc.agency

TELEPHONE

0333 335 5445

<http://www.acdcsalesandlettings.co.uk>

SUMMARY

Take a look at this fantastic EXTENDED two bedroom semi-detached property which is situated within the highly popular residential area of Erdington! Viewings are available immediately!

