



**3 Bed Bungalow - Semi Detached
located in**



2 The Doglands Leamington Spa CV31 2HE



£399,950

CONTACT

Office 1H
Valiant Office Suites
Lumonics House
Valley Drive, Rugby
Warwickshire
CV21 1TQ

EMAIL

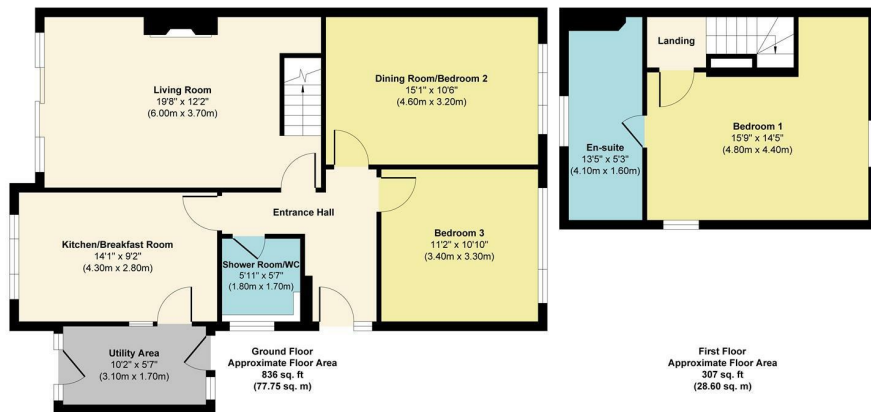
sales@acdc.agency

TELEPHONE

0333 335 5445

<http://www.acdcsalesandlettings.co.uk>

2 The Doglands



Approx. Gross Internal Floor Area 1143 sq. ft / 106.35 sq. m

Illustration for identification purposes only. Measurements are approximate, not to scale.
Produced by Elements Property

SUMMARY

Delightful on The Doglands! Take a look at this stunning three bedroom semi-detached dormer bungalow situated within a quiet private road within the popular residential area of Whitnash - this property really needs to be viewed to be appreciated.

Energy Efficiency Rating	
Current	Potential
69	82
<p>Very energy efficient - lower running costs</p> <p>(92 plus) A</p> <p>(81-91) B</p> <p>(69-80) C</p> <p>(55-68) D</p> <p>(39-54) E</p> <p>(21-38) F</p> <p>(1-20) G</p> <p>Not energy efficient - higher running costs</p>	
<p>England & Wales</p> <p>EU Directive 2002/91/EC</p>	