

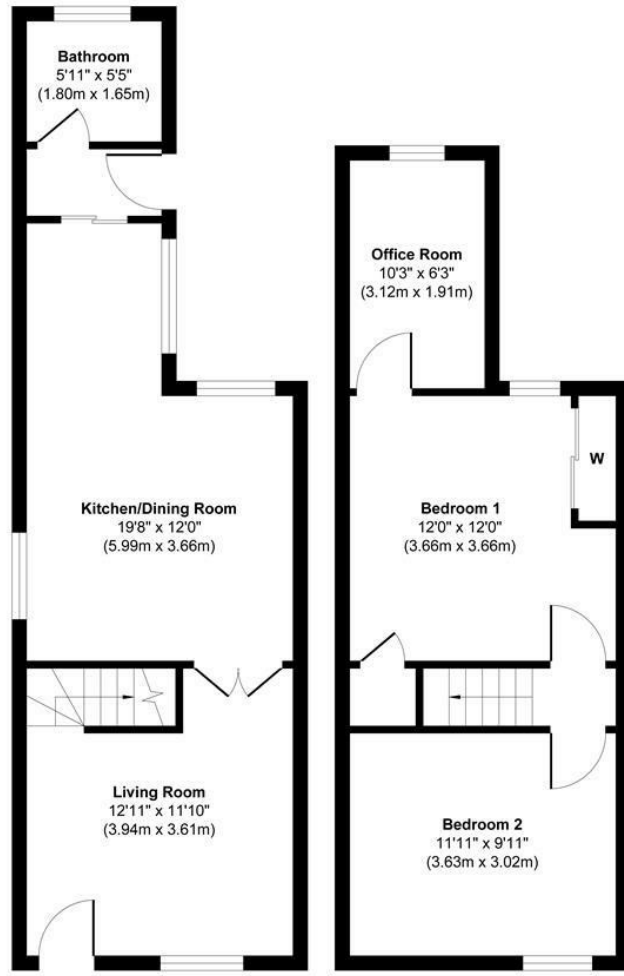
2 Bed House - Semi-Detached  
located in



171 Lentons Lane  
Coventry  
CV2 1NZ



171 Lentons Lane



Ground Floor  
Approximate Floor Area  
404 sq. ft  
(37.53 sq. m)

First Floor  
Approximate Floor Area  
366 sq. ft  
(34.00 sq. m)

Approx. Gross Internal Floor Area 770 sq. ft / 71.53 sq. m

Illustration for identification purposes only, measurements are approximate, not to scale.  
Produced by Elements Property

Offers Over £169,950

CONTACT

Office 1H  
Valiant Office Suites  
Lumonics House  
Valley Drive, Rugby  
Warwickshire  
CV21 1TQ

EMAIL

sales@acdc.agency

TELEPHONE

0333 335 5445

<http://www.acdcsalesandlettings.co.uk>

SUMMARY

ACDC Sales and Lettings are delighted to offer to market this two double bedroom semi-detached property which is situated on the highly desirable Lentons Lane, Alderman's Green. Although the property does require renovation it offers a fantastic opportunity to any prospective buyer to acquire a property with field views to both the front and rear aspects. The property also benefits from a garage and is being offered to market with NO ONWARD CHAIN!

