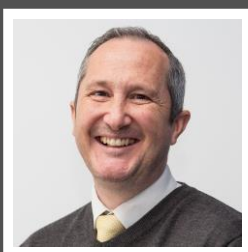


Love Homes



Finch Walk, Flitwick, Bedfordshire, MK45 1NB

This well-presented three-bedroom home in Flitwick offers around 892 sq. ft. of accommodation, ideal for modern living. Features include a spacious 24ft 6 open-plan living/dining room, a stylish modern kitchen with direct garden access, and a downstairs cloakroom. Upstairs are three bedrooms and a contemporary family bathroom. Additional benefits include double glazing and gas-to-radiator central heating. Outside, the property enjoys established front and rear gardens, providing ideal spaces for relaxation and entertaining. A garage is located in a nearby block, all set within a popular and sought-after residential area.



This property is presented by Duncan Stead - a Love Homes property expert with over 25 years' experience.

Find out more about this property by scanning the QR code.



0.4m



3



1



1

Tenure: Freehold

Council Tax: C

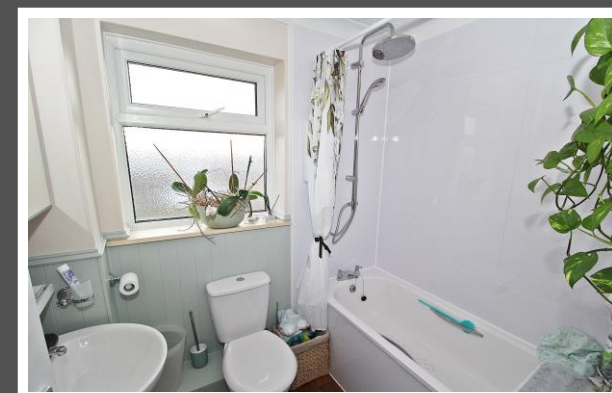


Selling properties in **Flitwick**, Silsoe, **Amphill**, Toddington, **Barton Le Clay**, Clophill and surrounding villages

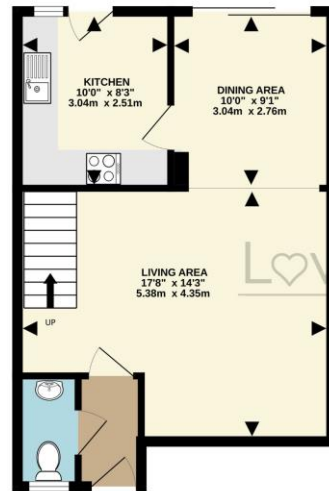




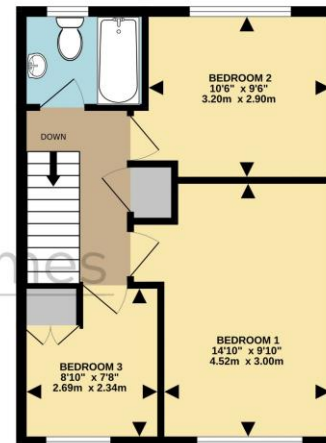
Finch Walk has been my home for over 20 years, and during that time I've truly loved living here and building wonderful friendships with neighbours who have become part of everyday life. It's a location that makes life easy, with the schools, shops and train station all just a short walk away – it really does feel like everything you need is right on your doorstep. One of the things I've treasured most is the little green at the end of the path. It's been the heart of the community, hosting so many memorable get-togethers over the years, from Covid catch-ups to Jubilee celebrations and other key moments. It's that strong sense of community, alongside the convenience of the location, that has made Finch Walk such a special place to call home."



GROUND FLOOR
444 sq.ft. (41.3 sq.m.) approx.



1ST FLOOR
428 sq.ft. (39.8 sq.m.) approx.



TOTAL FLOOR AREA: 872 sq.ft. (81.0 sq.m.) approx.
Drawn by Love Homes for illustrative purposes only. Measurements and areas shown are approximate.
Made with Metagix ©2006

Score	Energy rating	Current	Potential
92+	A		
81-91	B		83 B
69-80	C	70 C	
55-68	D		
39-54	E		
21-38	F		
1-20	G		

5 The Russell Centre, Coniston Road, Flitwick, MK45 1QY
Tel: 01525 713111

Email: flitwick@lovehomes.uk

www.lovehomes.uk



These particulars are set out as a general outline in accordance with the Property Misdescriptions Act (1991) only for the guidance of intending purchasers or lessees, and do not constitute any part of an offer or contract. Details are given without any responsibility, and any intending purchasers, lessees or third parties should not rely on them as statements or representations of fact but must satisfy themselves by inspection or otherwise as to the correctness of each of them. We have not carried out a structural survey and the services, appliances and specific fittings have not been tested. All photographs, measurements, floor plans and distances referred to are given as a guide only and should not be relied upon for the purchase of carpets or any other fixtures or fittings. Gardens, roof terraces, balconies and communal gardens as well as tenure and lease details cannot have their accuracy guaranteed for intending purchasers. Lease details, service ground rent (where applicable) are given as a guide only and should be checked and confirmed by your solicitor prior to exchange of contracts. No person in the employment of Love Homes has any authority to make any representation or warranty whatever in relation to this property. Purchase prices, rents or other prices quoted are correct at the date of publication and, unless otherwise stated, are exclusive of VAT. We retain the copyright in all advertising material used to market this Property. All information is as advised by the seller and subject to change. Council tax bands can be subject to change by the local council.

Love Homes