

Love Homes



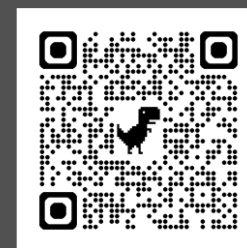
Grange Road, Ampthill, Bedfordshire, MK45 2PA

This substantial four bedroom house with loft room, situated on a very popular road in Ampthill, has been heavily extended to both the rear and side, offering considerable living space for a growing family. The property benefits from three versatile reception rooms, an extended kitchen with a utility area and cloakroom, and a truly impressive approximate 150ft south-facing rear garden, making it an ideal family home in a sought-after location.



This property is presented by Patrick Graystone - a Love Homes property expert with over 25 years' experience.

Find out more about this property by scanning the QR code.



1.4m



4



3



2

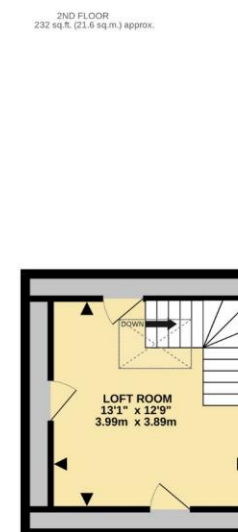
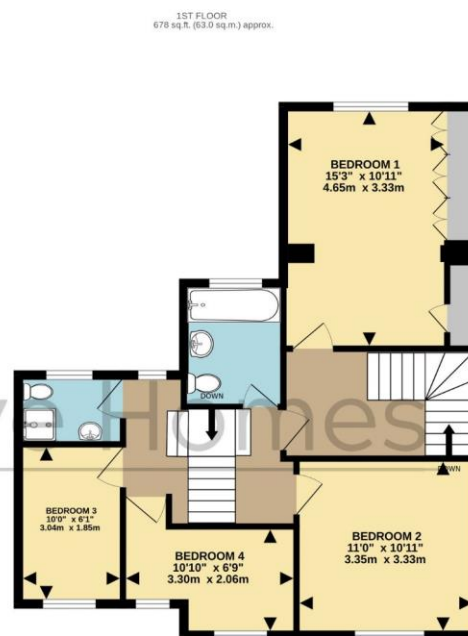
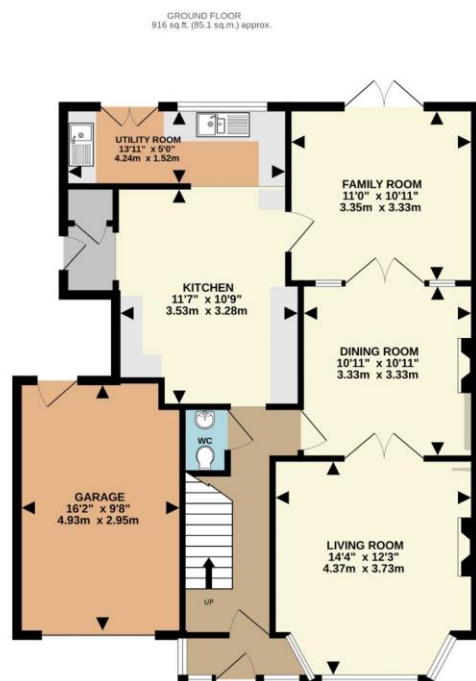
Tenure: Freehold

Council Tax: D



Amphill, Bedfordshire, is a charming historic market town known for its vibrant community and picturesque setting. Steeped in history, it was once home to Amphill Castle, where Catherine of Aragon lived during her separation from Henry VIII. The town boasts a lively centre with independent shops, cafés, and traditional pubs, along with regular markets and local events. Surrounded by beautiful countryside, including Amphill Great Park, it offers excellent opportunities for walking and outdoor leisure. With strong transport links to Bedford, Milton Keynes, and London via nearby Flitwick station, Amphill combines rural charm with modern convenience, making it a highly desirable place to live.





Score	Energy rating	Current	Potential
92+	A		
81-91	B		
69-80	C		76 C
55-68	D	62 D	
39-54	E		
21-38	F		
1-20	G		

5 The Russell Centre, Coniston Road, Flitwick, MK45 1QY
Tel: 01525 713111

Email: flitwick@lovehomes.uk

www.lovehomes.uk



These particulars are set out as a general outline in accordance with the Property Misdescriptions Act (1991) only for the guidance of intending purchasers or lessees, and do not constitute any part of an offer or contract. Details are given without any responsibility, and any intending purchasers, lessees or third parties should not rely on them as statements or representations of fact but must satisfy themselves by inspection or otherwise as to the correctness of each of them. We have not carried out a structural survey and the services, appliances and specific fittings have not been tested. All photographs, measurements, floor plans and distances referred to are given as a guide only and should not be relied upon for the purchase of carpets or any other fixtures or fittings. Gardens, roof terraces, balconies and communal gardens as well as tenure and lease details cannot have their accuracy guaranteed for intending purchasers. Lease details, service ground rent (where applicable) are given as a guide only and should be checked and confirmed by your solicitor prior to exchange of contracts. No person in the employment of Love Homes has any authority to make any representation or warranty whatever in relation to this property. Purchase prices, rents or other prices quoted are correct at the date of publication and, unless otherwise stated, are exclusive of VAT. We retain the copyright in all advertising material used to market this Property. All information is as advised by the seller and subject to change. Council tax bands can be subject to change by the local council.

Love Homes