

Love Homes



Windmill View, Houghton Conquest, Bedfordshire MK45 3GD

On arrival, you're welcomed by a bright entrance hall with a handy downstairs cloakroom. The spacious lounge is light-filled and ideal for relaxing or entertaining, featuring direct garden access and a stylish new media wall. A modern kitchen/diner provides the perfect space for everyday meals and social gatherings. Upstairs, two generous double bedrooms and a well-kept family bathroom ensure comfortable living. Externally, the landscaped rear garden offers an attractive, low-maintenance retreat, ideal for summer dining. The property also boasts a driveway with off-road parking for up to three vehicles.



This property is presented by Patrick Graystone - a Love Homes property expert with over 25 years' experience.

Find out more about this property by scanning the QR code.



6.2m



2



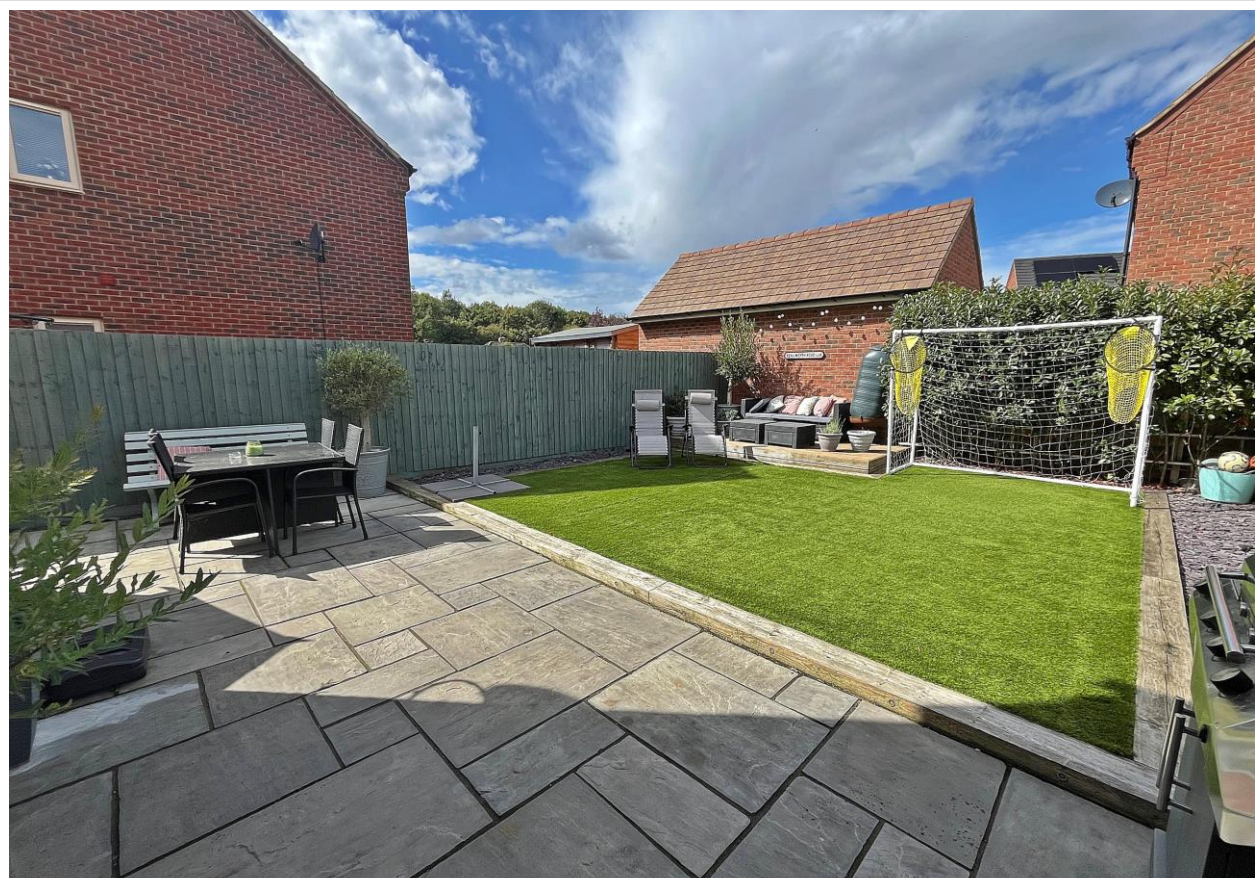
1



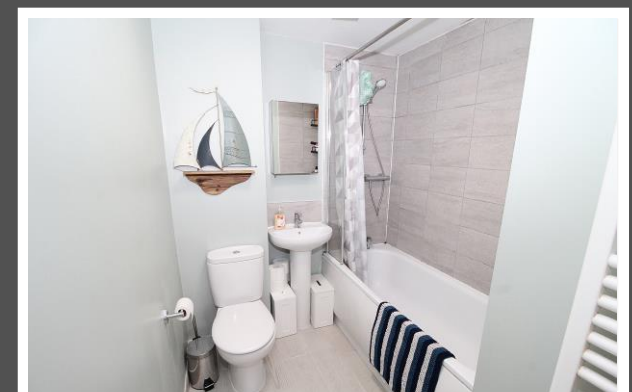
1

Tenure: Freehold

Council Tax: C



The village of Houghton Conquest is ideally located between the Bedfordshire towns of Ampthill and Bedford, both approximately five miles away. These towns offer extensive amenities, including Waitrose stores, schools, and local parks. In Houghton Conquest, you'll find two well-established pub/eateries, a local store with a sub post office, a village hall, Houghton Conquest Lower School, and numerous public footpaths and bridleways. Commuting is convenient, with Bedford providing links to London St Pancras in about forty minutes and Flitwick station, just six miles away, offering regular services that take as little as thirty-five minutes.





Score	Energy rating	Current	Potential
92+	A		97 A
81-91	B	85 B	
69-80	C		
55-68	D		
39-54	E		
21-38	F		
1-20	G		

5 The Russell Centre, Coniston Road, Flitwick, MK45 1QY
Tel: 01525 713111

Email: flitwick@lovehomes.uk

www.lovehomes.uk



These particulars are set out as a general outline in accordance with the Property Misdescriptions Act (1991) only for the guidance of intending purchasers or lessees, and do not constitute any part of an offer or contract. Details are given without any responsibility, and any intending purchasers, lessees or third parties should not rely on them as statements or representations of fact but must satisfy themselves by inspection or otherwise as to the correctness of each of them. We have not carried out a structural survey and the services, appliances and specific fittings have not been tested. All photographs, measurements, floor plans and distances referred to are given as a guide only and should not be relied upon for the purchase of carpets or any other fixtures or fittings. Gardens, roof terraces, balconies and communal gardens as well as tenure and lease details cannot have their accuracy guaranteed for intending purchasers. Lease details, service ground rent (where applicable) are given as a guide only and should be checked and confirmed by your solicitor prior to exchange of contracts. No person in the employment of Love Homes has any authority to make any representation or warranty whatever in relation to this property. Purchase prices, rents or other prices quoted are correct at the date of publication and, unless otherwise stated, are exclusive of VAT. We retain the copyright in all advertising material used to market this Property. All information is as advised by the seller and subject to change. Council tax bands can be subject to change by the local council.

Love Homes