

Love Homes



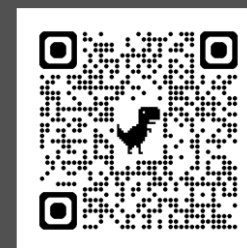
Ely Close, Flitwick, Bedfordshire, MK45 1UJ

The accommodation begins with an open-plan dual-aspect living room, creating a bright, airy space. At its heart is a stylish 15'7" kitchen with Quartz worktops, island breakfast bar, and integrated appliances including oven, combi oven, dishwasher, fridge/freezer, and washer/dryer—ideal for cooking and entertaining. A 14'10" dining room with vaulted ceiling enjoys garden views. Upstairs are three bedrooms and a modern family bathroom. Externally, a generous south-facing garden offers patios, flower beds, and a side garden with expansion potential. A private driveway and detached garage provide parking and storage.



This property is presented by Duncan Stead - a Love Homes property expert with over 25 years' experience.

Find out more about this property by scanning the QR code.



0.5m



3



2



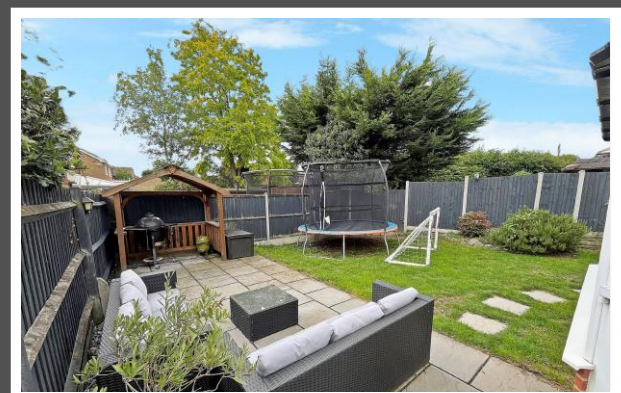
1

Tenure: Freehold

Council Tax: D

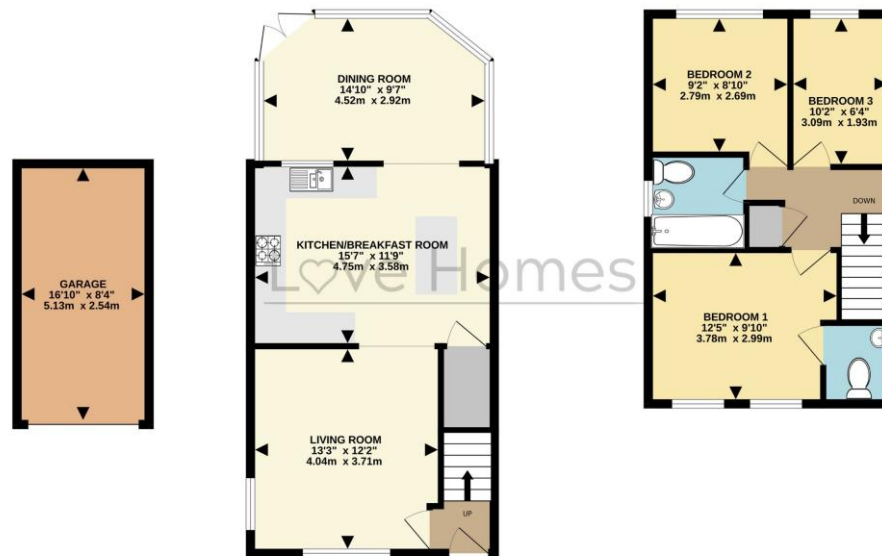


"We've truly loved living here - it's been the perfect family home in a peaceful, safe cul-de-sac where our children have grown up happily, playing with their friends just outside the door. One of the things we've always appreciated is the larger than average plot. The extra strip of garden to the side has given the kids so much space to run around and play, and it also offers exciting potential to extend the house if someone wanted to - something we seriously considered over the years. We've taken care to keep the home updated, including a stylish kitchen renovation and replacing the conservatory roof with a proper, insulated one transforming it into a comfortable, usable space all year round."



GROUND FLOOR

1ST FLOOR



Drawn by Love Homes for illustrative purposes only. Measurements and areas shown are approximate.
Made with Metropix ©2025

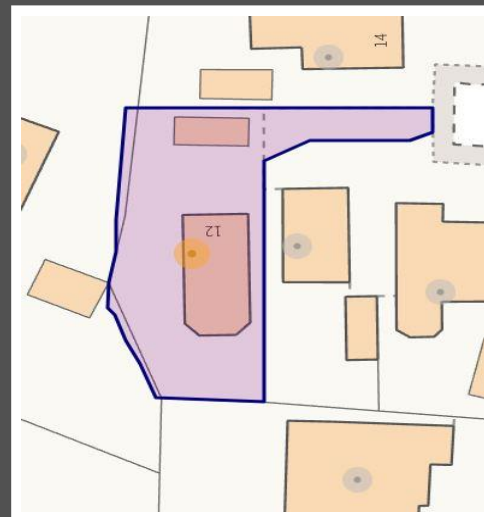
Score	Energy rating	Current	Potential
92+	A		
81-91	B		
69-80	C		
55-68	D		
39-54	E		
21-38	F		
1-20	G		

EPC RATING TO FOLLOW

5 The Russell Centre, Coniston Road, Flitwick, MK45 1QY
Tel: 01525 713111

Email: flitwick@lovehomes.uk

www.lovehomes.uk



These particulars are set out as a general outline in accordance with the Property Misdescriptions Act (1991) only for the guidance of intending purchasers or lessees, and do not constitute any part of an offer or contract. Details are given without any responsibility, and any intending purchasers, lessees or third parties should not rely on them as statements or representations of fact but must satisfy themselves by inspection or otherwise as to the correctness of each of them. We have not carried out a structural survey and the services, appliances and specific fittings have not been tested. All photographs, measurements, floor plans and distances referred to are given as a guide only and should not be relied upon for the purchase of carpets or any other fixtures or fittings. Gardens, roof terraces, balconies and communal gardens as well as tenure and lease details cannot have their accuracy guaranteed for intending purchasers. Lease details, service ground rent (where applicable) are given as a guide only and should be checked and confirmed by your solicitor prior to exchange of contracts. No person in the employment of Love Homes has any authority to make any representation or warranty whatever in relation to this property. Purchase prices, rents or other prices quoted are correct at the date of publication and, unless otherwise stated, are exclusive of VAT. We retain the copyright in all advertising material used to market this Property. All information is as advised by the seller and subject to change. Council tax bands can be subject to change by the local council.

Love Homes