

# Love Homes



Tyburn Lane, Pulloxhill, Bedfordshire, MK45 5HG



A gated entrance leads to a spacious driveway and beautifully landscaped 1.67-acre garden, offering a serene retreat. Inside, a grand hallway with lift access sets the tone for elegance. The ground floor boasts three reception rooms, a light-filled conservatory, a study, and a high-spec kitchen/breakfast room with quartz surfaces. Upstairs, the luxurious master suite includes a dressing room and spa-like en suite. Three additional bedrooms and a modern family bathroom complete the space. Highlights include an indoor heated pool, a double garage, and two downstairs W.C.'s, ensuring both luxury and convenience.



This property is presented by Patrick Graystone - a Love Homes property expert with over 25 years' experience.

Find out more about this property by scanning the QR code.



2.5m

Tenure: Freehold



4



4

Council Tax: G



2

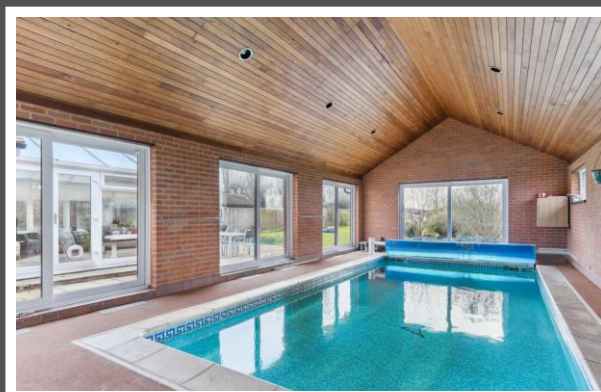




---

Pulloxhill, with its rich history spanning over a thousand years, is one of the oldest villages in Bedfordshire. The village offers a range of local amenities, including a well-regarded pub, a community-focused school, and a historic church. Located just a 6-7 minute drive away, Flitwick provides convenient access to London via its train service. Additionally, the M1 and A1 motorways offer easy road connections for travel. For education, Greenfield Lower School serves the local community, while students progress to Arnold Academy and Harlington Upper School for their secondary education.

---





Approximate Gross Internal Area  
 Ground Floor = 249.0 sq m / 2,680 sq ft  
 (Including Garage)  
 First Floor = 127.6 sq m / 1,373 sq ft  
 Total = 376.6 sq m / 4,053 sq ft

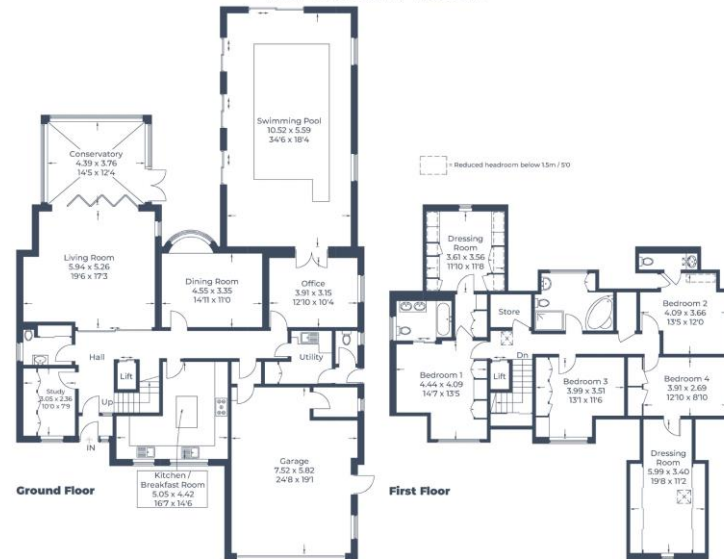
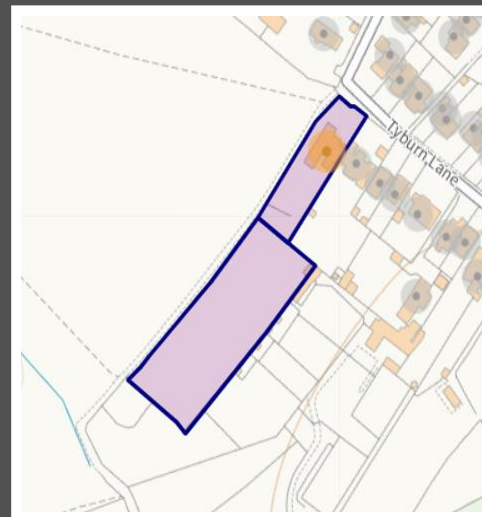


Illustration for identification purposes only,  
 measurements are approximate, not to scale.  
 © CJ Property Marketing Produced for Love Homes

Score	Energy rating	Current	Potential
92+	A		
81-91	B		
69-80	C	72 C	79 C
55-68	D		
39-54	E		
21-38	F		
1-20	G		



These particulars are set out as a general outline in accordance with the Property Misdescriptions Act (1991) only for the guidance of intending purchasers or lessees, and do not constitute any part of an offer or contract. Details are given without any responsibility, and any intending purchasers, lessees or third parties should not rely on them as statements or representations of fact but must satisfy themselves by inspection or otherwise as to the correctness of each of them. We have not carried out a structural survey and the services, appliances and specific fittings have not been tested. All photographs, measurements, floor plans and distances referred to are given as a guide only and should not be relied upon for the purchase of carpets or any other fixtures or fittings. Gardens, roof terraces, balconies and communal gardens as well as tenure and lease details cannot have their accuracy guaranteed for intending purchasers. Lease details, service ground rent (where applicable) are given as a guide only and should be checked and confirmed by your solicitor prior to exchange of contracts. No person in the employment of Love Homes has any authority to make any representation or warranty whatever in relation to this property. Purchase prices, rents or other prices quoted are correct at the date of publication and, unless otherwise stated, are exclusive of VAT. We retain the copyright in all advertising material used to market this Property. All information is as advised by the seller and subject to change. Council tax bands can be subject to change by the local council.

5 The Russell Centre, Coniston Road, Flitwick, MK45 1QY  
 Tel: 01525 713111

Email: [flitwick@lovehomes.uk](mailto:flitwick@lovehomes.uk)

[www.lovehomes.uk](http://www.lovehomes.uk)



**Love Homes**