

Love Homes



Eagle Drive, Flitwick, Bedfordshire, MK45 1SP

This beautifully presented three-bedroom semi-detached home is in a sought-after area near local schools. It features a stunning open-plan kitchen/dining room with Velux skylights, integrated appliances, and bi-fold doors leading to the south-easterly facing garden. The light-filled home includes a spacious living room with Karndean flooring, an entrance porch, a cloakroom, two double bedrooms, a single bedroom, and a modern shower room. The rear garden offers a lawn, patio, and gated side access. A single garage in a nearby block provides storage or parking, with additional parking in front for one vehicle.



This property is presented by Duncan Stead - a Love Homes property expert with over 25 years' experience.

Find out more about this property by scanning the QR code.



0.5m



3



2



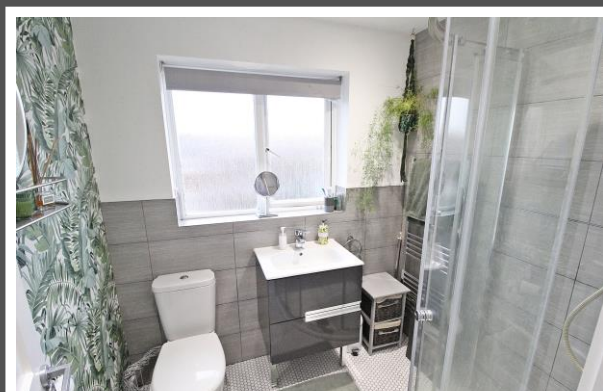
1

Tenure: Freehold

Council Tax: C



"I have loved living in my house for the past two years. The local area has everything from lovely countryside walks, to the hustle and bustle of Milton Keynes, with its shopping, cinema, theatre and even Skiing, within easy reach. The house itself is perfect for entertaining, the extension providing two reception rooms. I love the bi fold doors, that flood natural light into the back room, and with the doors open, the space turns into one large area, perfect for relaxing and dining."





Score	Energy rating	Current	Potential
92+	A		
81-91	B		
69-80	C	70 C	86 B
55-68	D		
39-54	E		
21-38	F		
1-20	G		



These particulars are set out as a general outline in accordance with the Property Misdescriptions Act (1991) only for the guidance of intending purchasers or lessees, and do not constitute any part of an offer or contract. Details are given without any responsibility, and any intending purchasers, lessees or third parties should not rely on them as statements or representations of fact but must satisfy themselves by inspection or otherwise as to the correctness of each of them. We have not carried out a structural survey and the services, appliances and specific fittings have not been tested. All photographs, measurements, floor plans and distances referred to are given as a guide only and should not be relied upon for the purchase of carpets or any other fixtures or fittings. Gardens, roof terraces, balconies and communal gardens as well as tenure and lease details cannot have their accuracy guaranteed for intending purchasers. Lease details, service ground rent (where applicable) are given as a guide only and should be checked and confirmed by your solicitor prior to exchange of contracts. No person in the employment of Love Homes has any authority to make any representation or warranty whatever in relation to this property. Purchase prices, rents or other prices quoted are correct at the date of publication and, unless otherwise stated, are exclusive of VAT. We retain the copyright in all advertising material used to market this Property. All information is as advised by the seller and subject to change. Council tax bands can be subject to change by the local council.

5 The Russell Centre, Coniston Road, Flitwick, MK45 1QY
Tel: 01525 713111

Email: flitwick@lovehomes.uk

www.lovehomes.uk



Love Homes