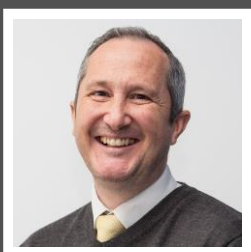


Love Homes



Pankhurst Row, Flitwick, Bedfordshire, MK45 1GE

The entrance hall leads to the first floor and a cloakroom. The modern kitchen/diner features high-gloss units, integrated appliances, and French doors to the garden. The spacious dining area overlooks the garden, while the expansive 18'5" x 14'0" living room enjoys dual-aspect light. Upstairs, four well-sized bedrooms include a main with built-in wardrobes and an en-suite. The south-facing garden offers a patio, artificial lawn, and a decked seating area. A block-paved driveway fits 2-3 cars, with an EV charger and an oversized garage for extra parking or storage. Gated side access adds convenience.



This property is presented by Duncan Stead - a Love Homes property expert with over 25 years' experience.

Find out more about this property by scanning the QR code.



1.5m



4



1



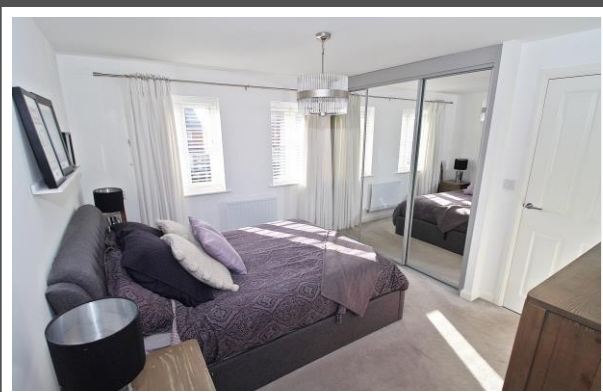
2

Tenure: Freehold

Council Tax: C



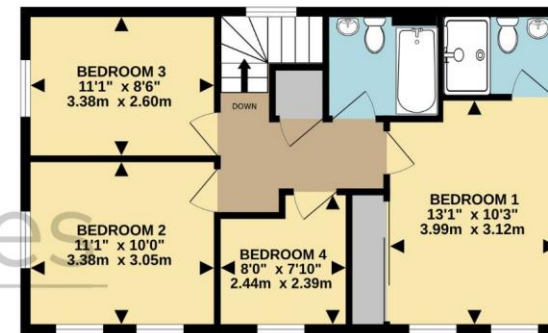
“We chose this home as our first new build with great care, the location is simply fantastic overlooking a peaceful green and park that provide a sense of openness and privacy - we never feel overlooked. Being so close to the countryside has been a real blessing too, offering the perfect escape from the hustle and bustle whenever we need it. One of the things we've really appreciated is how bright and airy the house feels, thanks to its lovely south/west-facing aspect. It's always filled with natural light, which makes it such a cheerful space to call home. The parking here has also been a huge bonus; there's plenty of room, so we never have to worry when family and friends come to visit - it's such a comfort to know everyone is easily accommodated. Plus, having a local leisure centre just a short distance away has been so convenient for staying active and enjoying the facilities. This home has given us everything we could have hoped for and more”.



GROUND FLOOR
829 sq.ft. (77.0 sq.m.) approx.



1ST FLOOR
574 sq.ft. (53.4 sq.m.) approx.



TOTAL FLOOR AREA : 1403 sq.ft. (130.4 sq.m.) approx.
Drawn by Love Homes for illustrative purposes only. Measurements and areas shown are approximate.
Made with Metropix ©2025

Score	Energy rating	Current	Potential
92+	A		94 A
81-91	B	84 B	
69-80	C		
55-68	D		
39-54	E		
21-38	F		
1-20	G		

5 The Russell Centre, Coniston Road, Flitwick, MK45 1QY
Tel: 01525 713111

Email: flitwick@lovehomes.uk

www.lovehomes.uk



These particulars are set out as a general outline in accordance with the Property Misdescriptions Act (1991) only for the guidance of intending purchasers or lessees, and do not constitute any part of an offer or contract. Details are given without any responsibility, and any intending purchasers, lessees or third parties should not rely on them as statements or representations of fact but must satisfy themselves by inspection or otherwise as to the correctness of each of them. We have not carried out a structural survey and the services, appliances and specific fittings have not been tested. All photographs, measurements, floor plans and distances referred to are given as a guide only and should not be relied upon for the purchase of carpets or any other fixtures or fittings. Gardens, roof terraces, balconies and communal gardens as well as tenure and lease details cannot have their accuracy guaranteed for intending purchasers. Lease details, service ground rent (where applicable) are given as a guide only and should be checked and confirmed by your solicitor prior to exchange of contracts. No person in the employment of Love Homes has any authority to make any representation or warranty whatever in relation to this property. Purchase prices, rents or other prices quoted are correct at the date of publication and, unless otherwise stated, are exclusive of VAT. We retain the copyright in all advertising material used to market this Property. All information is as advised by the seller and subject to change. Council tax bands can be subject to change by the local council.

Love Homes