

Love Homes



Townfield Road, Flitwick, Bedfordshire, MK45 1JG

The ground floor features a spacious 14ft living room with a feature fireplace and a bay window overlooking the front. The 20ft open-plan kitchen/diner offers modern units and granite-effect worktops. A convenient wet room completes this level. Upstairs, the main bedroom overlooks the rear garden, while the 2nd and 3rd bedrooms have been reconfigured for more balanced room sizes. The private rear garden includes a lawn, patio, flowerbeds, and side access. A shared driveway leads to a detached garage with power and light, and the front garden has potential for extra parking.



This property is presented by Duncan Stead - a Love Homes property expert with over 25 years' experience.

Find out more about this property by scanning the QR code.



0.6m



3



1



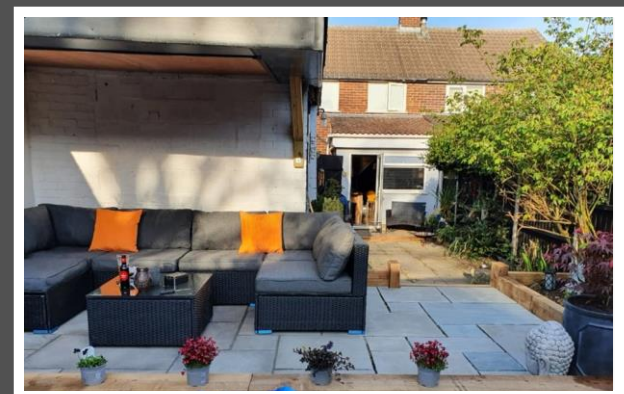
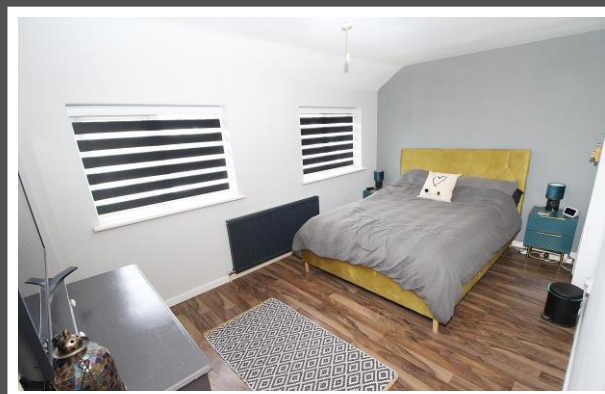
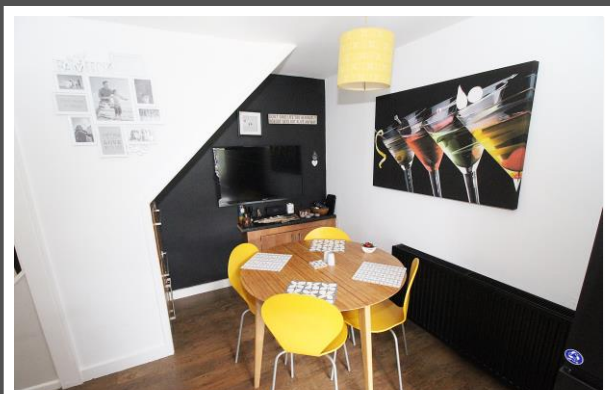
1

Tenure: Freehold

Council Tax: C



"Living on Townfield Road for the past 15 years has been an absolute pleasure. The sense of community here is special, with a wonderful mix of families and long time residents. Our garden has been a real sanctuary, providing a peaceful retreat where we can enjoy privacy while being surrounded by birds and wildlife and it's been the perfect space to host friends on warm summer evenings. One thing that attracted us to the property was the upstairs layout - it's a little different to others in the street, with bedrooms 2 and 3 being more even in size and much more practical especially if you have kids."

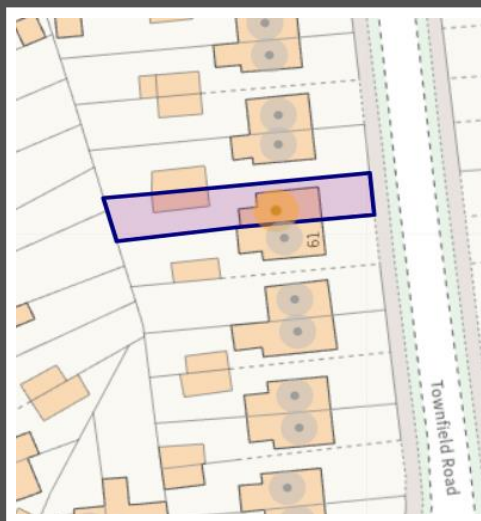




TOTAL FLOOR AREA: 862 sq.ft. (80.1 sq.m.) approx.
Drawn by Love Homes for illustrative purposes only. Measurements and areas shown are approximate. Made with Metropia 62024

Score	Energy rating	Current	Potential
92+	A		
81-91	B		
69-80	C		
55-68	D		
39-54	E		
21-38	F		
1-20	G		

EPC RATING TO FOLLOW



These particulars are set out as a general outline in accordance with the Property Misdescriptions Act (1991) only for the guidance of intending purchasers or lessees, and do not constitute any part of an offer or contract. Details are given without any responsibility, and any intending purchasers, lessees or third parties should not rely on them as statements or representations of fact but must satisfy themselves by inspection or otherwise as to the correctness of each of them. We have not carried out a structural survey and the services, appliances and specific fittings have not been tested. All photographs, measurements, floor plans and distances referred to are given as a guide only and should not be relied upon for the purchase of carpets or any other fixtures or fittings. Gardens, roof terraces, balconies and communal gardens as well as tenure and lease details cannot have their accuracy guaranteed for intending purchasers. Lease details, service ground rent (where applicable) are given as a guide only and should be checked and confirmed by your solicitor prior to exchange of contracts. No person in the employment of Love Homes has any authority to make any representation or warranty whatever in relation to this property. Purchase prices, rents or other prices quoted are correct at the date of publication and, unless otherwise stated, are exclusive of VAT. We retain the copyright in all advertising material used to market this Property. All information is as advised by the seller and subject to change. Council tax bands can be subject to change by the local council.

5 The Russell Centre, Coniston Road, Flitwick, MK45 1QY
 Tel: 01525 713111

Email: flitwick@lovehomes.uk

www.lovehomes.uk



Love Homes