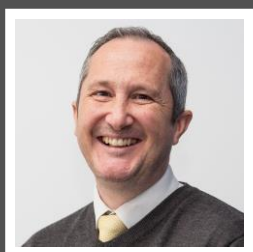


Love Homes



Dunstable Road, Flitwick, Bedfordshire, MK45 1HP

This brand-new eco-friendly semi-detached home combines modern living with sustainability, featuring in-roof solar panels, an air source heat pump, and an EV charging point. The ground floor offers a bright, open-plan living, dining, and kitchen space with underfloor heating and tri-fold doors opening to a south-facing garden, perfect for entertaining. The stylish kitchen includes high-end appliances, Quartz worktops, and a breakfast bar. A utility room and cloakroom complete the floor. Upstairs, there are three double bedrooms, including a principal with en-suite. The south facing garden features a lawn, patio, and off-road parking for two cars.



This property is presented by Duncan Stead - a Love Homes property expert with over 25 years' experience.

Find out more about this property by scanning the QR code.



0.3m



3



1



2

Tenure: Freehold

Council Tax: E



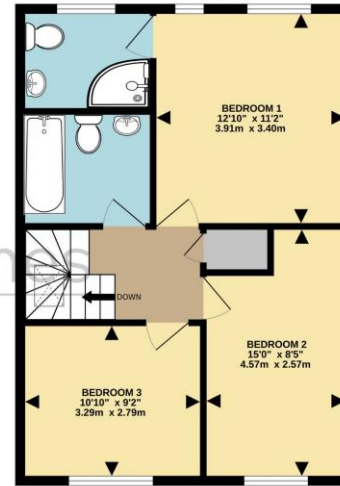
"Our aim was to create a modern sustainable family home close to all the local amenities that Flitwick has to offer and using high quality materials achieving a very high energy efficient rating and we are proud to have achieved this."



GROUND FLOOR

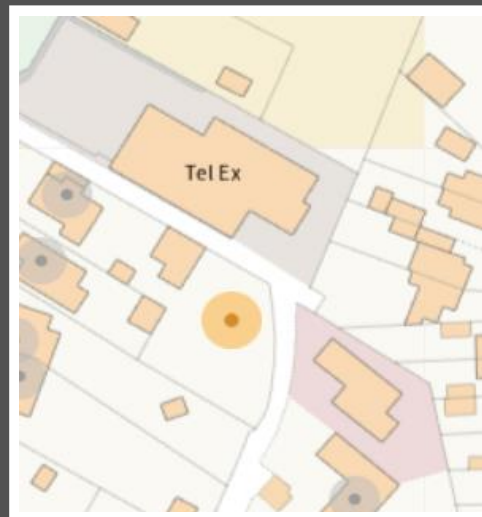


1ST FLOOR



Drawn by Love Homes for illustrative purposes only. Measurements and areas shown are approximate. Made with Metropix ©2024

Score	Energy rating	Current	Potential
92+	A		
81-91	B	86 B	89 B
69-80	C		
55-68	D		
39-54	E		
21-38	F		
1-20	G		



These particulars are set out as a general outline in accordance with the Property Misdescriptions Act (1991) only for the guidance of intending purchasers or lessees, and do not constitute any part of an offer or contract. Details are given without any responsibility, and any intending purchasers, lessees or third parties should not rely on them as statements or representations of fact but must satisfy themselves by inspection or otherwise as to the correctness of each of them. We have not carried out a structural survey and the services, appliances and specific fittings have not been tested. All photographs, measurements, floor plans and distances referred to are given as a guide only and should not be relied upon for the purchase of carpets or any other fixtures or fittings. Gardens, roof terraces, balconies and communal gardens as well as tenure and lease details cannot have their accuracy guaranteed for intending purchasers. Lease details, service ground rent (where applicable) are given as a guide only and should be checked and confirmed by your solicitor prior to exchange of contracts. No person in the employment of Love Homes has any authority to make any representation or warranty whatever in relation to this property. Purchase prices, rents or other prices quoted are correct at the date of publication and, unless otherwise stated, are exclusive of VAT. We retain the copyright in all advertising material used to market this Property. All information is as advised by the seller and subject to change. Council tax bands can be subject to change by the local council.

5 The Russell Centre, Coniston Road, Flitwick, MK45 1QY
Tel: 01525 713111

Email: flitwick@lovehomes.uk

www.lovehomes.uk



Love Homes