

Love Homes



Truro Gardens, Flitwick, Bedfordshire MK45 1UH

Upon entering, you're greeted by an inviting hall with a cloakroom. The 19'10" living room, with a bay window, offers a bright space. The dining room connects to the living room, family room, and modern kitchen, which features "Siemens" appliances. Upstairs are four bedrooms, with the main bedroom spacious enough for freestanding wardrobes and the others with built-in wardrobes. A modern bathroom completes the floor. The easterly-facing garden includes a patio, lawn, powered shed, and side access. A driveway leads to a single garage with power and light.



This property is presented by Duncan Stead - a Love Homes property expert with over 25 years' experience.

Find out more about this property by scanning the QR code.



0.6m



4



3



1

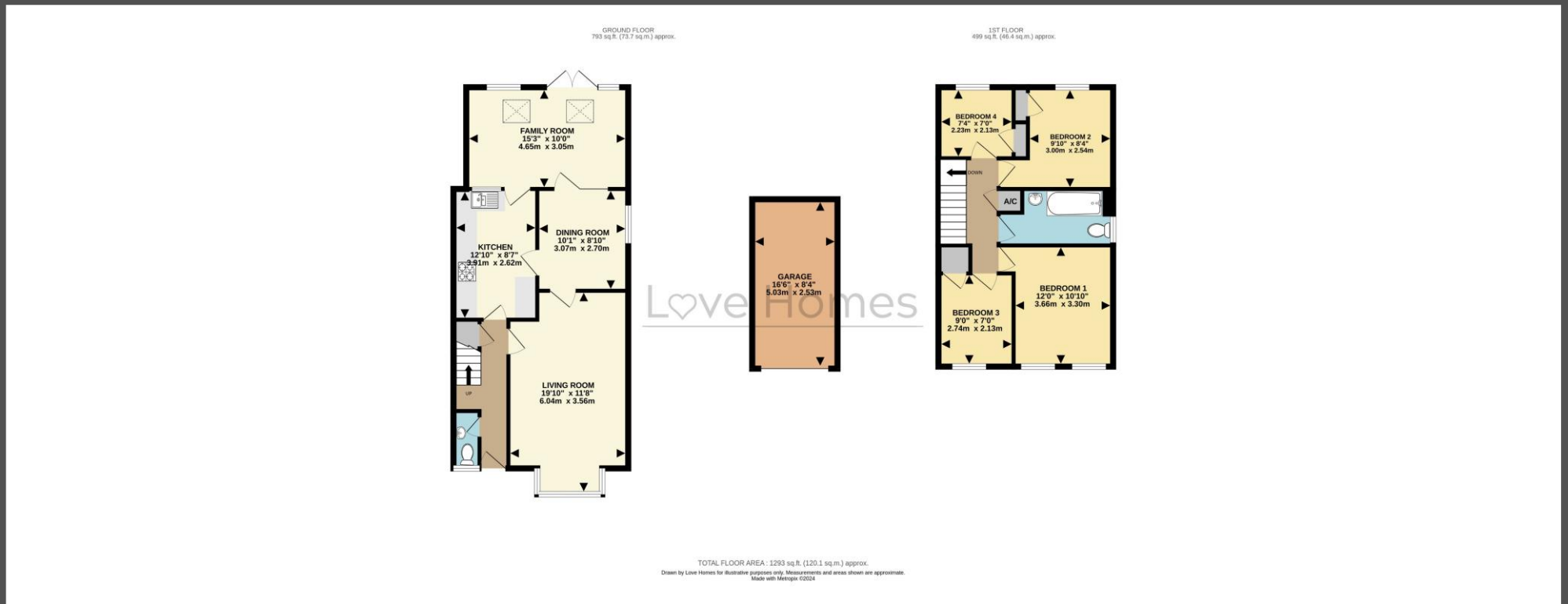
Tenure: Freehold

Council Tax: E



"I would happily live here for another 25 years if it weren't for the lifestyle appeal of Devon calling. This estate is incredibly quiet and friendly, with many original owners still here, creating a true sense of community. The extension has significantly improved the practical living space. I currently use the family room as a music and cinema room, but it could easily be utilised as a home office, gym, or children's playroom. It's a beautiful room that opens directly onto the garden. Location-wise, Truro Gardens couldn't be better with shops, the train station, and schools all within easy walking distance. We hope the new owners will enjoy the layout and space as much as we have."





Score	Energy rating	Current	Potential
92+	A		
81-91	B		83 B
69-80	C	70 C	
55-68	D		
39-54	E		
21-38	F		
1-20	G		

5 The Russell Centre, Coniston Road, Flitwick, MK45 1QY
Tel: 01525 713111

Email: flitwick@lovehomes.uk

www.lovehomes.uk



These particulars are set out as a general outline in accordance with the Property Misdescriptions Act (1991) only for the guidance of intending purchasers or lessees, and do not constitute any part of an offer or contract. Details are given without any responsibility, and any intending purchasers, lessees or third parties should not rely on them as statements or representations of fact but must satisfy themselves by inspection or otherwise as to the correctness of each of them. We have not carried out a structural survey and the services, appliances and specific fittings have not been tested. All photographs, measurements, floor plans and distances referred to are given as a guide only and should not be relied upon for the purchase of carpets or any other fixtures or fittings. Gardens, roof terraces, balconies and communal gardens as well as tenure and lease details cannot have their accuracy guaranteed for intending purchasers. Lease details, service ground rent (where applicable) are given as a guide only and should be checked and confirmed by your solicitor prior to exchange of contracts. No person in the employment of Love Homes has any authority to make any representation or warranty whatever in relation to this property. Purchase prices, rents or other prices quoted are correct at the date of publication and, unless otherwise stated, are exclusive of VAT. We retain the copyright in all advertising material used to market this Property. All information is as advised by the seller and subject to change. Council tax bands can be subject to change by the local council.

Love Homes