

Love Homes



High Street, Westoning, Bedfordshire MK45 5JG

This stunning three-bedroom detached house offers beautifully updated accommodation. Inside, enjoy stylish open-plan living with a welcoming entrance hall featuring a glass balustrade, a re-fitted cloakroom, a 24'5" living/dining room with wood-effect flooring, and a conservatory with an insulated roof. The re-fitted kitchen includes solid wood worktops and integrated appliances. The first floor boasts a bathroom with a "Clawfoot" bath, an en-suite main bedroom, and two additional bedrooms. The property includes double-glazed windows, gas central heating, and solid oak doors. The exterior offers ample off-road parking, a low-maintenance rear garden, and a detached single garage.



This property is presented by Duncan Stead - a Love Homes property expert with over 25 years' experience.

Find out more about this property by scanning the QR code.



1.6m



3



2



2

Tenure: Freehold

Council Tax: D

Flitwick & Ampthill 01525 713111



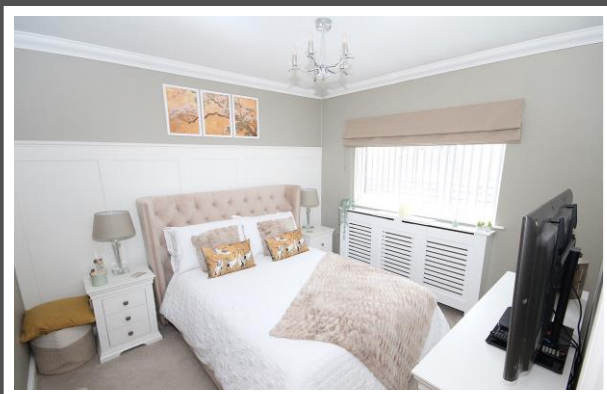
Barton-le-Clay and Luton 01582 882440

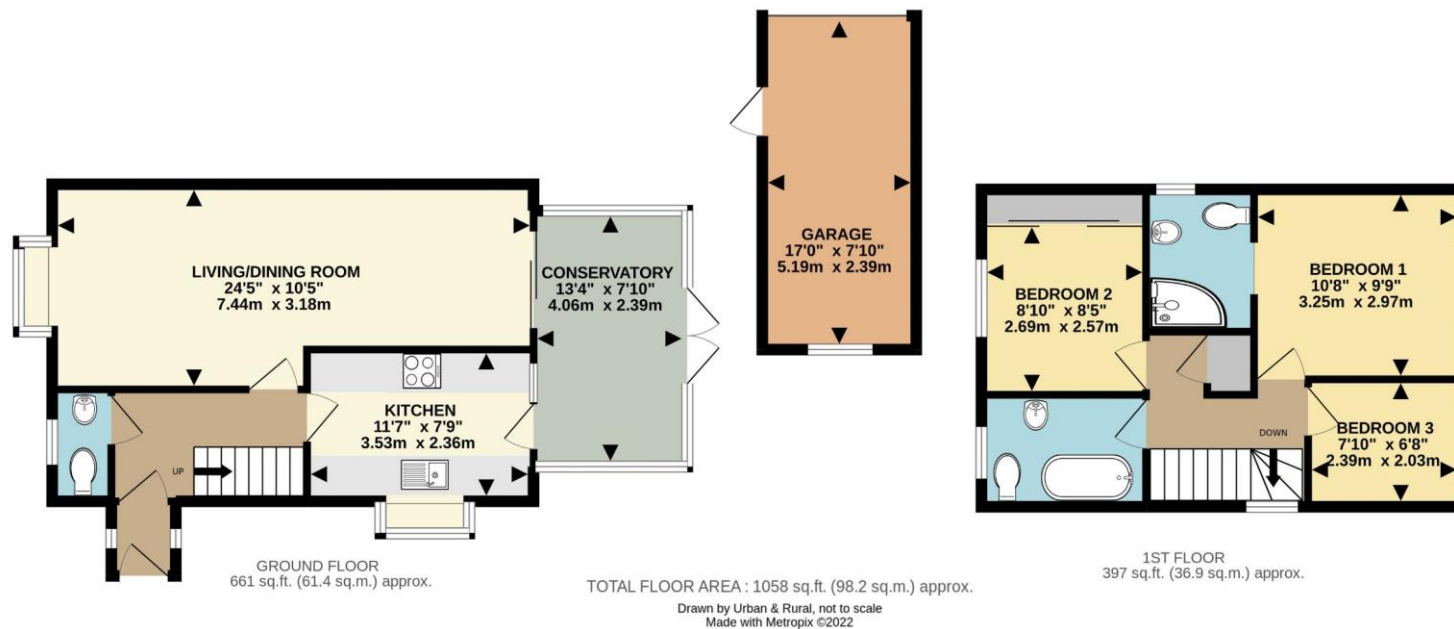


Biggleswade & Sandy 01767 669222



"Having relocated from a bustling town in Hertfordshire several years ago, we discovered that Westoning was the perfect fit for us. The village boasts a strong community spirit with social events throughout the year, all while being just a short drive from the M1 and train stations in Flitwick and Harlington. It truly feels like everything you need is right on your doorstep! We've loved updating the property over the past few years and have especially enjoyed entertaining friends and family in our secluded garden".





Score	Energy rating	Current	Potential
92+	A		
81-91	B		
69-80	C		
55-68	D		
39-54	E		
21-38	F		
1-20	G		

**EPC RATING TO FOLLOW**



These particulars are set out as a general outline in accordance with the Property Misdescriptions Act (1991) only for the guidance of intending purchasers or lessees, and do not constitute any part of an offer or contract. Details are given without any responsibility, and any intending purchasers, lessees or third parties should not rely on them as statements or representations of fact but must satisfy themselves by inspection or otherwise as to the correctness of each of them. We have not carried out a structural survey and the services, appliances and specific fittings have not been tested. All photographs, measurements, floor plans and distances referred to are given as a guide only and should not be relied upon for the purchase of carpets or any other fixtures or fittings. Gardens, roof terraces, balconies and communal gardens as well as tenure and lease details cannot have their accuracy guaranteed for intending purchasers. Lease details, service ground rent (where applicable) are given as a guide only and should be checked and confirmed by your solicitor prior to exchange of contracts. No person in the employment of Love Homes has any authority to make any representation or warranty whatever in relation to this property. Purchase prices, rents or other prices quoted are correct at the date of publication and, unless otherwise stated, are exclusive of VAT. We retain the copyright in all advertising material used to market this Property. All information is as advised by the seller and subject to change. Council tax bands can be subject to change by the local council.

5 The Russell Centre, Coniston Road, Flitwick, MK45 1QY  
Tel: 01525 713111

Email: [flitwick@lovehomes.uk](mailto:flitwick@lovehomes.uk)

[www.lovehomes.uk](http://www.lovehomes.uk)



**Love Homes**