



Primrose Close, Flitwick, Bedfordshire MK45 1PL

This charming three-bedroom home is ideally located within walking distance of local schools, Flitwick train station, and high street shops. Perfect for first-time buyers, investors, or those looking to downsize, it features bright family accommodation across two floors and a delightful south-westerly facing rear garden.

The entrance lobby leads to an open-plan lounge/diner with double doors to the garden and a modern kitchen with ample storage. Upstairs are three bedrooms with built-in wardrobes and a contemporary bathroom. Additional features include double glazing, gas radiator heating, a sunny rear garden with patio seating, and a single garage in a nearby block.



This property is presented by Duncan Stead - a Love Homes property expert with over 25 years' experience.

Find out more about this property by scanning the QR code.



0.5m



3



1



1

Tenure: Freehold

Council Tax: C

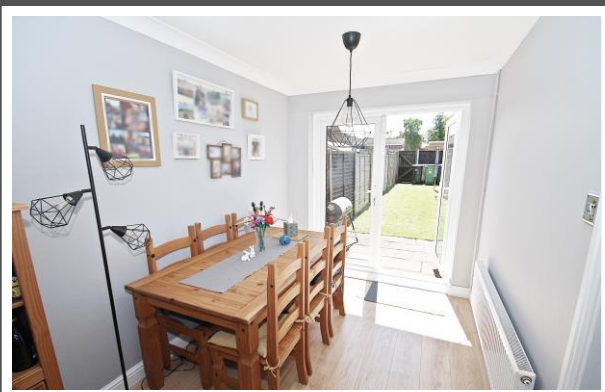




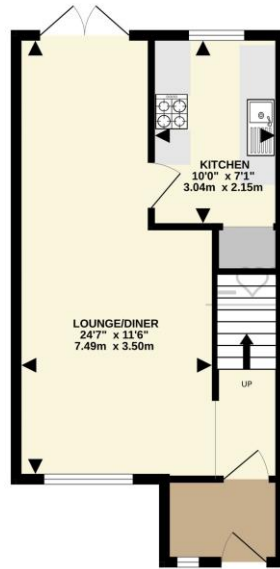
♥

If you want to be close to schools, shops and the train station then Primrose Close is perfect for you and we've certainly enjoyed the benefits of living here. You can take a short-cut to the train station which takes less than 10 mins and the local lower and middle schools are just around the corner- no need to drive anywhere! We love having an open plan living space and feel fortunate to have a real sun trap south facing garden which is wonderful during the summer months. Primrose Close is a lovely quiet area and we've made some lifelong friends with our neighbours - we wish we could take them with us.

♥



GROUND FLOOR  
389 sq. ft. (36.1 sq.m.) approx.



1ST FLOOR  
360 sq. ft. (33.4 sq.m.) approx.



TOTAL FLOOR AREA: 749 sq. ft. (69.6 sq.m.) approx.  
Drawn by Love Homes for illustrative purposes only. Measurements and areas shown are approximate.  
Made with floorplan.co.uk

Score	Energy rating	Current	Potential
92+	A		
81-91	B		87 B
69-80	C	72 C	
55-68	D		
39-54	E		
21-38	F		
1-20	G		



These particulars are set out as a general outline in accordance with the Property Misdescriptions Act (1991) only for the guidance of intending purchasers or lessees, and do not constitute any part of an offer or contract. Details are given without any responsibility, and any intending purchasers, lessees or third parties should not rely on them as statements or representations of fact but must satisfy themselves by inspection or otherwise as to the correctness of each of them. We have not carried out a structural survey and the services, appliances and specific fittings have not been tested. All photographs, measurements, floor plans and distances referred to are given as a guide only and should not be relied upon for the purchase of carpets or any other fixtures or fittings. Gardens, roof terraces, balconies and communal gardens as well as tenure and lease details cannot have their accuracy guaranteed for intending purchasers. Lease details, service ground rent (where applicable) are given as a guide only and should be checked and confirmed by your solicitor prior to exchange of contracts. No person in the employment of Love Homes has any authority to make any representation or warranty whatever in relation to this property. Purchase prices, rents or other prices quoted are correct at the date of publication and, unless otherwise stated, are exclusive of VAT. We retain the copyright in all advertising material used to market this Property. All information is as advised by the seller and subject to change. Council tax bands can be subject to change by the local council.

5 The Russell Centre, Coniston Road, Flitwick, MK45 1QY  
Tel: 01525 713111

Email: [flitwick@lovehomes.uk](mailto:flitwick@lovehomes.uk)

[www.lovehomes.uk](http://www.lovehomes.uk)



**Love Homes**