

Love Homes



Pankhurst Row, Flitwick, Bedfordshire MK45 1GE

This charming three-bedroom semi-detached home sits within a coveted modern development on Flitwick's outskirts, offering serene pond and grassland views. Close to open countryside and a leisure center with an indoor pool, it boasts a thoughtfully designed open-plan layout with an inviting entrance hall, convenient cloakroom, and a stunning living/dining area overlooking the garden. The sleek kitchen features integrated appliances. Upstairs, a family bathroom and three generously sized bedrooms await, with the primary bedroom boasting an en-suite and built-in wardrobe. Outside, a lawn, patio, shed, and gated side access enhance the appeal, along with off-road parking, double glazing, and gas central heating.



This property is presented by Duncan Stead - a Love Homes property expert with over 25 years' experience.

Find out more about this property by scanning the QR code.



1.0m



3



1



2

Tenure: Freehold

Council Tax: C

Flitwick & Ampthill 01525 713111



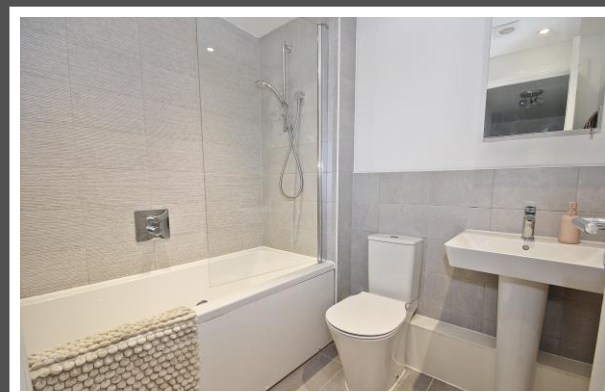
Barton-le-Clay and Luton 01582 882440



Biggleswade & Sandy 01767 669222



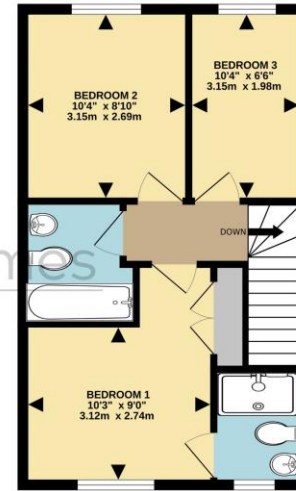
"We chose this plot for our new build precisely because of its picturesque view overlooking a tranquil pond, which sets it apart from the typical suburban landscape. Witnessing deer come to drink and the bustling wildlife it attracts adds a special charm to the area. Moreover, our location offers convenient access to a shortcut leading to the train station, as well as proximity to the tennis club and leisure centre. The garden's ideal orientation ensures delightful alfresco dining in the summer sun after a busy day at work - a lovely added perk!"



GROUND FLOOR

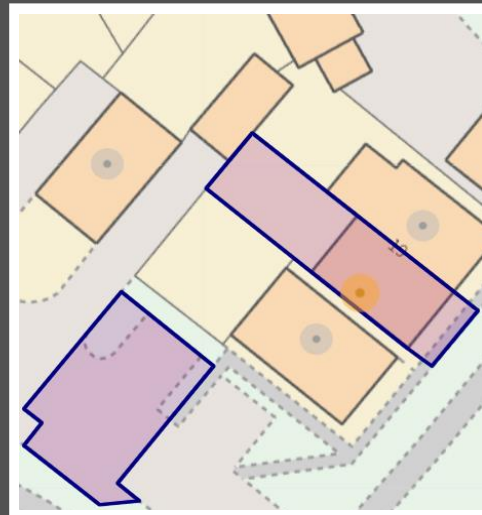


1ST FLOOR



Drawn by Love Homes for illustrative purposes only. Measurements and areas shown are approximate. Made with Lettings 02024

Score	Energy rating	Current	Potential
92+	A		96 A
81-91	B	83 B	
69-80	C		
55-68	D		
39-54	E		
21-38	F		
1-20	G		



These particulars are set out as a general outline in accordance with the Property Misdescriptions Act (1991) only for the guidance of intending purchasers or lessees, and do not constitute any part of an offer or contract. Details are given without any responsibility, and any intending purchasers, lessees or third parties should not rely on them as statements or representations of fact but must satisfy themselves by inspection or otherwise as to the correctness of each of them. We have not carried out a structural survey and the services, appliances and specific fittings have not been tested. All photographs, measurements, floor plans and distances referred to are given as a guide only and should not be relied upon for the purchase of carpets or any other fixtures or fittings. Gardens, roof terraces, balconies and communal gardens as well as tenure and lease details cannot have their accuracy guaranteed for intending purchasers. Lease details, service ground rent (where applicable) are given as a guide only and should be checked and confirmed by your solicitor prior to exchange of contracts. No person in the employment of Love Homes has any authority to make any representation or warranty whatever in relation to this property. Purchase prices, rents or other prices quoted are correct at the date of publication and, unless otherwise stated, are exclusive of VAT. We retain the copyright in all advertising material used to market this Property. All information is as advised by the seller and subject to change. Council tax bands can be subject to change by the local council.

5 The Russell Centre, Coniston Road, Flitwick, MK45 1QY
Tel: 01525 713111

Email: flitwick@lovehomes.uk

www.lovehomes.uk



Love Homes