



Astwood Drive, Flitwick, Bedfordshire MK45 1HW

This stunning three-bedroom home, nestled in a popular cul de sac near Flitwick town center and the train station, has undergone recent high-quality renovations. Boasting stylish living spaces perfect for contemporary living, it features an open plan kitchen/dining area with Quartz countertops and integrated appliances, a chic living room with a striking feature wall and electric fire, and convenient amenities like an extended porch, utility room, and downstairs cloakroom. Upstairs, three bedrooms and a family bathroom await, with Bedroom three currently serving as a dressing room. Outside, the low-maintenance rear garden offers artificial grass and decking for outdoor gatherings, while the front garden includes a driveway for off-road parking.



This property is presented by Duncan Stead - a Love Homes property expert with over 25 years' experience.

Find out more about this property by scanning the QR code.



0.4m



3



2



1

Tenure: Freehold

Council Tax: C



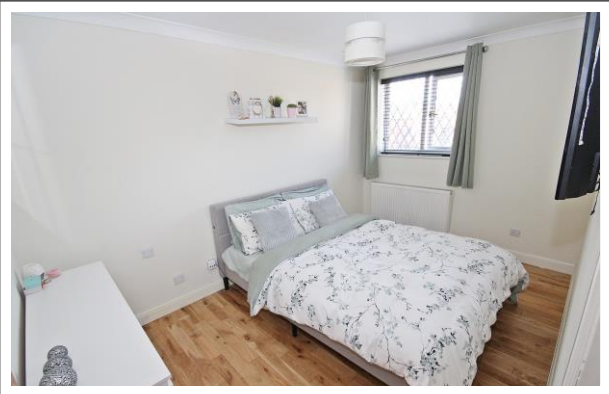




---

"The moment we stepped inside it was evident that this was our dream home. The spacious open-plan kitchen and dining area instantly caught our eye - it's ideal for entertaining family and friends. We use the third bedroom as a dressing room, but it can easily be converted into a formal bedroom if needed. Maintenance is a breeze, from the tidy garden to the expansive decking, where we love to unwind in the sun after a hectic day. The location couldn't be better for us; nestled in a quiet cul-de-sac, with schools and the train station within comfortable walking distance."

---





TOTAL FLOOR AREA: 1024 sq.ft. (95.1 sq.m.) approx.  
Drawn by Love Homes for illustrative purposes only. Measurements and areas shown are approximate.

Score	Energy rating	Current	Potential
92+	A		
81-91	B		
69-80	C		
55-68	D		
39-54	E		
21-38	F		
1-20	G		

EPC RATING  
TO FOLLOW



These particulars are set out as a general outline in accordance with the Property Misdescriptions Act (1991) only for the guidance of intending purchasers or lessees, and do not constitute any part of an offer or contract. Details are given without any responsibility, and any intending purchasers, lessees or third parties should not rely on them as statements or representations of fact but must satisfy themselves by inspection or otherwise as to the correctness of each of them. We have not carried out a structural survey and the services, appliances and specific fittings have not been tested. All photographs, measurements, floor plans and distances referred to are given as a guide only and should not be relied upon for the purchase of carpets or any other fixtures or fittings. Gardens, roof terraces, balconies and communal gardens as well as tenure and lease details cannot have their accuracy guaranteed for intending purchasers. Lease details, service ground rent (where applicable) are given as a guide only and should be checked and confirmed by your solicitor prior to exchange of contracts. No person in the employment of Love Homes has any authority to make any representation or warranty whatever in relation to this property. Purchase prices, rents or other prices quoted are correct at the date of publication and, unless otherwise stated, are exclusive of VAT. We retain the copyright in all advertising material used to market this Property. All information is as advised by the seller and subject to change. Council tax bands can be subject to change by the local council.

5 The Russell Centre, Coniston Road, Flitwick, MK45 1QY  
 Tel: 01525 713111

Email: [flitwick@lovehomes.uk](mailto:flitwick@lovehomes.uk)

[www.lovehomes.uk](http://www.lovehomes.uk)



**Love Homes**