

Love Homes



Elmwood Crescent, Flitwick, Bedfordshire MK45 1LH

Welcome to this stunning four-bedroom detached house. The ground floor boasts a 25'2" living room, perfect for entertaining, a 17'5" dining room with French doors leading to the rear garden, and a modern galley kitchen offering both style and functionality. Ascending the stairs you'll find a spacious landing leading to the main bedroom spanning 17'5" and featuring a dressing area and a modern en-suite bathroom complete with an additional shower cubicle. With three further double bedrooms. Outside, the secluded rear garden is a tranquil retreat, boasting mature flower bed borders, feature pond, a well-manicured lawn, and paved patio and decking areas. There is gated side access as well as a garden shed and greenhouse, while a 12'10 summerhouse with light and electric points is powered by solar panels. To the front, a carriage driveway provides ample off-road parking and grants access to the integral garage.



This property is presented by Duncan Stead - a Love Homes property expert with over 25 years' experience.

Find out more about this property by scanning the QR code.



0.7m



4



3



2

Tenure: Freehold

Council Tax: E





---

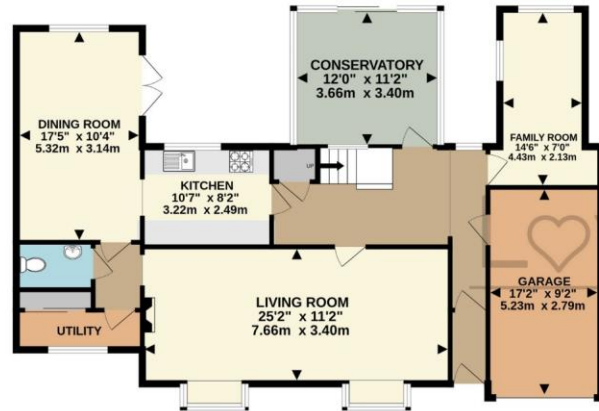
♥

"We have spent 18, very happy, years raising our family in this wonderful home and are now needing to downsize. The large plot size and peaceful area, yet close to the railway for commuting, attracted us to buy originally the house. Then with adding extensions either side has provided versatile and spacious accommodation and a uniqueness we appreciate. As avid lovers of the natural world, the substantial and secluded garden is a haven for wildlife diversity and a tranquil spot to relax or socialise."

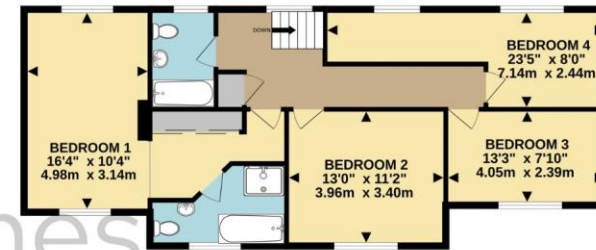
---



GROUND FLOOR  
1357 sq.ft. (126.0 sq.m.) approx.



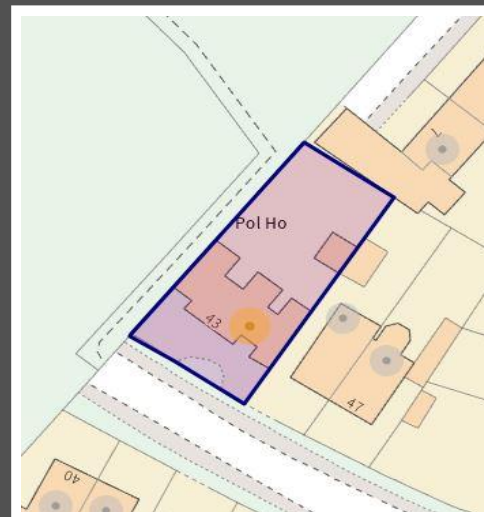
1ST FLOOR  
847 sq.ft. (78.7 sq.m.) approx.



TOTAL FLOOR AREA : 2204 sq.ft. (204.8 sq.m.) approx.

Drawn by Love Homes for illustrative purposes only. Measurements and areas shown are approximate.  
Made with Metropix ©2024

Score	Energy rating	Current	Potential
92+	A		
81-91	B		82 B
69-80	C	75 C	
55-68	D		
39-54	E		
21-38	F		
1-20	G		



These particulars are set out as a general outline in accordance with the Property Misdescriptions Act (1991) only for the guidance of intending purchasers or lessees, and do not constitute any part of an offer or contract. Details are given without any responsibility, and any intending purchasers, lessees or third parties should not rely on them as statements or representations of fact but must satisfy themselves by inspection or otherwise as to the correctness of each of them. We have not carried out a structural survey and the services, appliances and specific fittings have not been tested. All photographs, measurements, floor plans and distances referred to are given as a guide only and should not be relied upon for the purchase of carpets or any other fixtures or fittings. Gardens, roof terraces, balconies and communal gardens as well as tenure and lease details cannot have their accuracy guaranteed for intending purchasers. Lease details, service ground rent (where applicable) are given as a guide only and should be checked and confirmed by your solicitor prior to exchange of contracts. No person in the employment of Love Homes has any authority to make any representation or warranty whatever in relation to this property. Purchase prices, rents or other prices quoted are correct at the date of publication and, unless otherwise stated, are exclusive of VAT. We retain the copyright in all advertising material used to market this Property. All information is as advised by the seller and subject to change. Council tax bands can be subject to change by the local council.

5 The Russell Centre, Coniston Road, Flitwick, MK45 1QY  
Tel: 01525 713111

Email: [flitwick@lovehomes.uk](mailto:flitwick@lovehomes.uk)

[www.lovehomes.uk](http://www.lovehomes.uk)



**Love Homes**