

Love Homes



The Avenue, Flitwick, Bedfordshire MK45 1BP



Spanning approximately 2,267 sq.ft. including the garage, the house boasts five bedrooms, two bathrooms, and three reception rooms, providing versatile living space to cater to your family's needs. As you enter the home you are greeted by an impressive 25'10" living room featuring a charming feature fireplace and a bay window that bathes the room in natural light. There are generous size rooms throughout with high ceilings creating light and airy living space. One of the key highlights of this property is its 130ft south/easterly facing established and well-stocked rear garden. The garden offers a private haven where you can relax, entertain guests, or let the kids play. With off-road parking for several vehicles and a useful detached single garage.



This property is presented by Duncan Stead - a Love Homes property expert with over 25 years' experience.

Find out more about this property by scanning the QR code.



0.2m



5



3



2

Tenure: Freehold

Council Tax: G

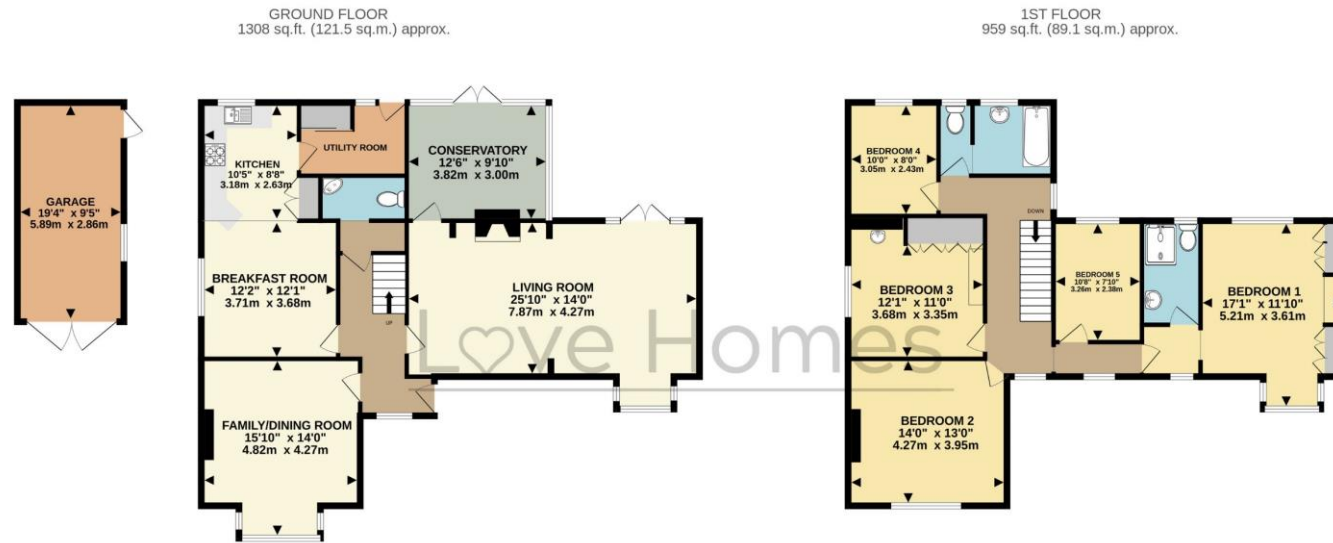






Flitwick combines rural charm with urban convenience. Its proximity to the M1 motorway and a mainline rail station ensures swift connections to London. A recent addition is the new leisure centre, boasting swimming pools, a fitness centre, and community spaces. Families value Flitwick for its excellent Lower, Middle and nearby Redbourn Upper schools. With its strategic location, excellent schools, and recreational facilities, Flitwick stands as an ideal haven for both commuters and families.





TOTAL FLOOR AREA : 2267 sq.ft. (210.6 sq.m.) approx.  
 Drawn by Love Homes for illustrative purposes only. Measurements and areas shown are approximate.  
 Made with Metropix ©2024

| Score | Energy rating | Current | Potential |
|-------|---------------|---------|-----------|
| 92+   | A             |         |           |
| 81-91 | B             |         | 82 B      |
| 69-80 | C             |         |           |
| 55-68 | D             | 64 D    |           |
| 39-54 | E             |         |           |
| 21-38 | F             |         |           |
| 1-20  | G             |         |           |



These particulars are set out as a general outline in accordance with the Property Misdescriptions Act (1991) only for the guidance of intending purchasers or lessees, and do not constitute any part of an offer or contract. Details are given without any responsibility, and any intending purchasers, lessees or third parties should not rely on them as statements or representations of fact but must satisfy themselves by inspection or otherwise as to the correctness of each of them. We have not carried out a structural survey and the services, appliances and specific fittings have not been tested. All photographs, measurements, floor plans and distances referred to are given as a guide only and should not be relied upon for the purchase of carpets or any other fixtures or fittings. Gardens, roof terraces, balconies and communal gardens as well as tenure and lease details cannot have their accuracy guaranteed for intending purchasers. Lease details, service ground rent (where applicable) are given as a guide only and should be checked and confirmed by your solicitor prior to exchange of contracts. No person in the employment of Love Homes has any authority to make any representation or warranty whatever in relation to this property. Purchase prices, rents or other prices quoted are correct at the date of publication and, unless otherwise stated, are exclusive of VAT. We retain the copyright in all advertising material used to market this Property. All information is as advised by the seller and subject to change. Council tax bands can be subject to change by the local council.

5 The Russell Centre, Coniston Road, Flitwick, MK45 1QY  
 Tel: 01525 713111

Email: [flitwick@lovehomes.uk](mailto:flitwick@lovehomes.uk)

[www.lovehomes.uk](http://www.lovehomes.uk)



**Love Homes**