

Love Homes



Glebe Avenue, Flitwick, Bedfordshire MK45 1HS

Welcome to this stunning five bedroom detached house in the much sought after non-estate location of Glebe Avenue, Flitwick. With its generous size rooms and versatile living space, this extended property offers approximately 1,720 sq.ft. of modern and comfortable living and is ideal for large families or those in need of some extra space.



This property is presented by Duncan Stead - a Love Homes property expert with over 25 years' experience.

Find out more about this property by scanning the QR code.



0.3m



5



2



2

Tenure: Freehold

Council Tax: F

Flitwick & Ampthill 01525 713111



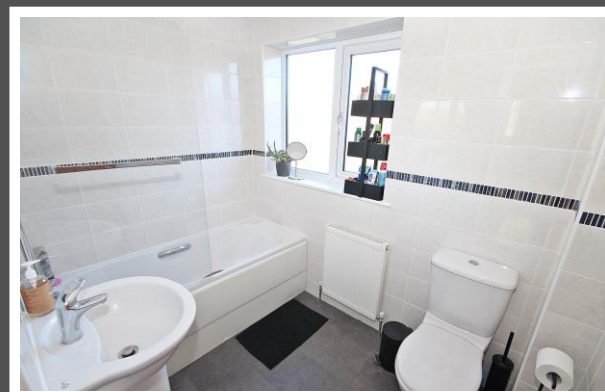
Barton-le-Clay and Luton 01582 882440



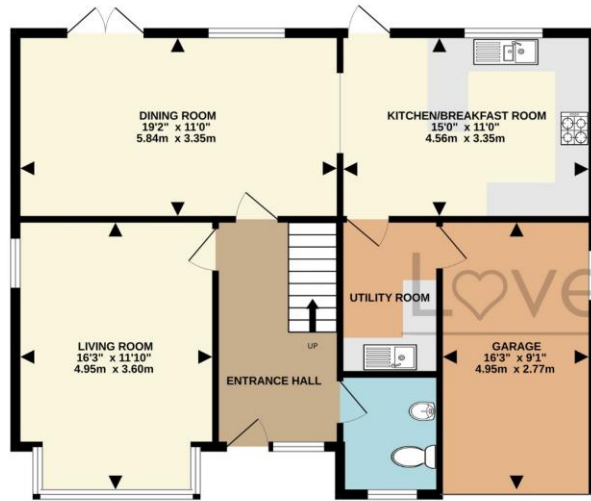
Biggleswade & Sandy 01767 669222



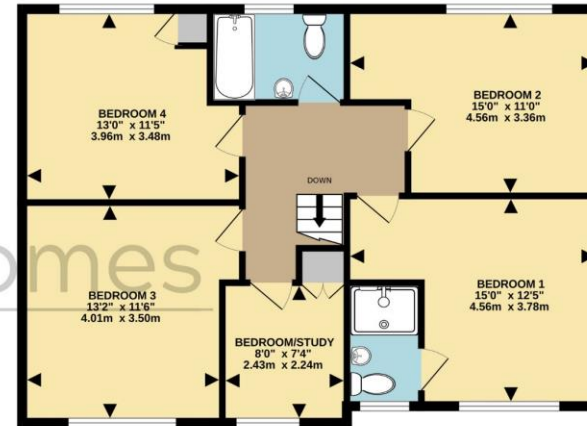
"When we bought this property we were upsizing from a 3 bed and we were bowled away by the size of the rooms and space it had. 4 of the 5 bedrooms are big doubles so if you have a family you won't need to worry about which child gets stuck with the smallest room! We love to entertain so the open plan layout at the back of the house works perfectly when friends and family turn up and we cosy up in the living room when they don't. It's a lovely established area with the station, high street shops and local lower and pre-school all on our doorstep. The neighbours are brilliant too - it's a shame they can't come with us!"



GROUND FLOOR
901 sq.ft. (83.7 sq.m.) approx.



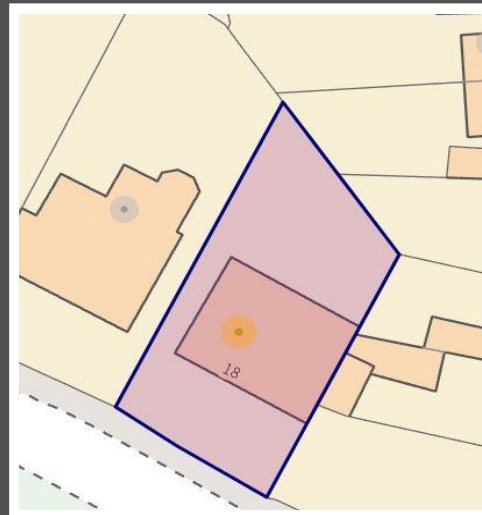
1ST FLOOR
818 sq.ft. (76.0 sq.m.) approx.



TOTAL FLOOR AREA: 1720 sq.ft. (159.7 sq.m.) approx.

Drawn by Love Homes for illustrative purposes only. Measurements and areas shown are approximate.
Made with Metropix ©2024

| Score | Energy rating | Current | Potential |
|-------|---------------|---------|-----------|
| 92+ | A | | |
| 81-91 | B | | 83 B |
| 69-80 | C | 73 C | |
| 55-68 | D | | |
| 39-54 | E | | |
| 21-38 | F | | |
| 1-20 | G | | |



These particulars are set out as a general outline in accordance with the Property Misdescriptions Act (1991) only for the guidance of intending purchasers or lessees, and do not constitute any part of an offer or contract. Details are given without any responsibility, and any intending purchasers, lessees or third parties should not rely on them as statements or representations of fact but must satisfy themselves by inspection or otherwise as to the correctness of each of them. We have not carried out a structural survey and the services, appliances and specific fittings have not been tested. All photographs, measurements, floor plans and distances referred to are given as a guide only and should not be relied upon for the purchase of carpets or any other fixtures or fittings. Gardens, roof terraces, balconies and communal gardens as well as tenure and lease details cannot have their accuracy guaranteed for intending purchasers. Lease details, service ground rent (where applicable) are given as a guide only and should be checked and confirmed by your solicitor prior to exchange of contracts. No person in the employment of Love Homes has any authority to make any representation or warranty whatever in relation to this property. Purchase prices, rents or other prices quoted are correct at the date of publication and, unless otherwise stated, are exclusive of VAT. We retain the copyright in all advertising material used to market this Property. All information is as advised by the seller and subject to change. Council tax bands can be subject to change by the local council.

5 The Russell Centre, Coniston Road, Flitwick, MK45 1QY
Tel: 01525 713111

Email: flitwick@lovehomes.uk

www.lovehomes.uk



Love Homes