

Love Homes



The Meadows, Flitwick, Bedfordshire, MK45 1XG

Ideal for first time and investment buyers, or those wishing to downsize, this two bedroom cluster home is located in a popular residential location towards the outskirts of Flitwick close to Ampthill. Available CHAIN FREE, the property benefits from a lounge/diner with bay window, a kitchen with matching wall and base units and granite effect worktops, two first floor bedrooms, a first floor bathroom with wall mounted electric shower over, double glazed windows, electric wall mounted heaters and allocated parking for two vehicles.



This property is presented by Duncan Stead - a Love Homes property expert with over 25 years' experience.

Find out more about this property by scanning the QR code.



1.1m



2



1



1

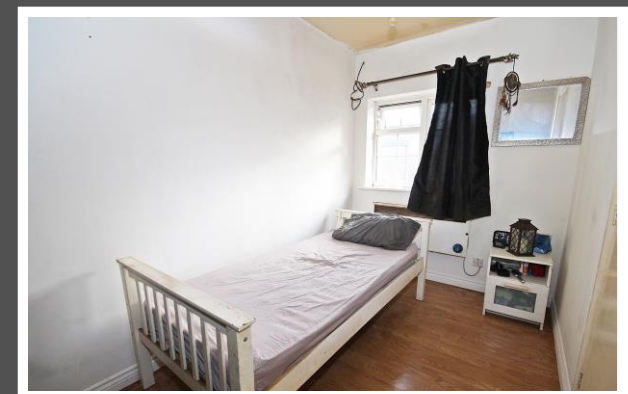
Tenure: Freehold

Council Tax: B

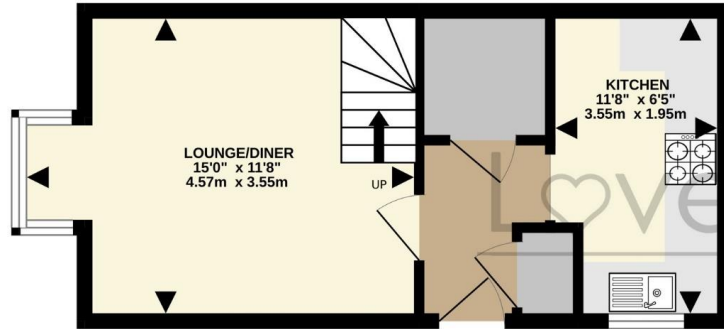




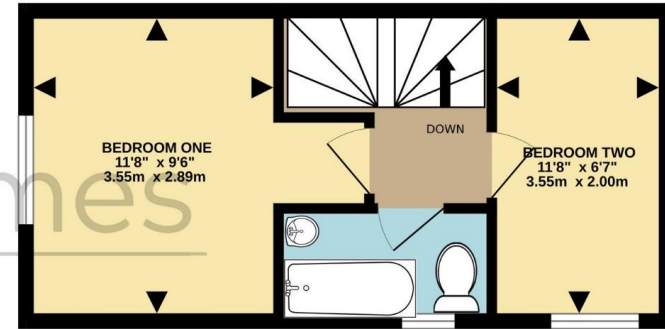
Flitwick is a small town in rural Bedfordshire which has seen significant development in recent years partly due to its excellent rail links to London. Surrounded by beautiful countryside, the town has excellent leisure amenities and a vibrant community spirit. Mentioned in the Domesday Book as 'a hamlet on the River Flit', Flitwick has many areas of historical and environmental interest including the 12th century Parish Church of St Peter and St Paul, the Mill, Flitwick Manor - now a hotel, Flitwick Moor, a nature reserve and a Site of Special Scientific Interest.



GROUND FLOOR
290 sq.ft. (27.0 sq.m.) approx.



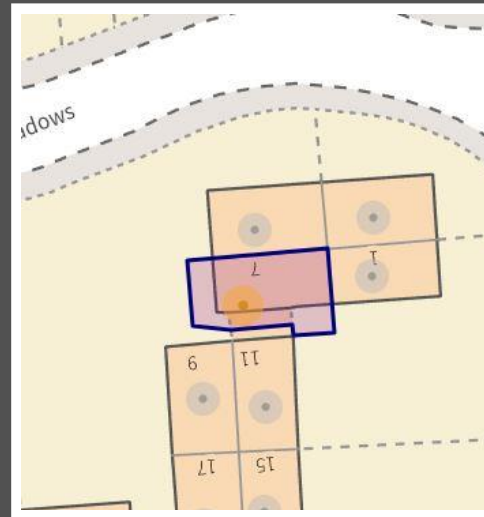
1ST FLOOR
280 sq.ft. (26.0 sq.m.) approx.



TOTAL FLOOR AREA : 570 sq.ft. (53.0 sq.m.) approx.

Drawn by Love Homes for illustrative purposes only. Measurements and areas shown are approximate.
Made with Metropix ©2024

Score	Energy rating	Current	Potential
92+	A		
81-91	B		
69-80	C		78 C
55-68	D		
39-54	E	54 E	
21-38	F		
1-20	G		



These particulars are set out as a general outline in accordance with the Property Misdescriptions Act (1991) only for the guidance of intending purchasers or lessees, and do not constitute any part of an offer or contract. Details are given without any responsibility, and any intending purchasers, lessees or third parties should not rely on them as statements or representations of fact but must satisfy themselves by inspection or otherwise as to the correctness of each of them. We have not carried out a structural survey and the services, appliances and specific fittings have not been tested. All photographs, measurements, floor plans and distances referred to are given as a guide only and should not be relied upon for the purchase of carpets or any other fixtures or fittings. Gardens, roof terraces, balconies and communal gardens as well as tenure and lease details cannot have their accuracy guaranteed for intending purchasers. Lease details, service ground rent (where applicable) are given as a guide only and should be checked and confirmed by your solicitor prior to exchange of contracts. No person in the employment of Love Homes has any authority to make any representation or warranty whatever in relation to this property. Purchase prices, rents or other prices quoted are correct at the date of publication and, unless otherwise stated, are exclusive of VAT. We retain the copyright in all advertising material used to market this Property. All information is as advised by the seller and subject to change. Council tax bands can be subject to change by the local council.

5 The Russell Centre, Coniston Road, Flitwick, MK45 1QY
Tel: 01525 713111

Email: flitwick@lovehomes.uk

www.lovehomes.uk



Love Homes