

Love Homes



Sanderson Road, Westoning, Bedfordshire, MK45 5JY

Step into the welcoming entrance hall where a modern downstairs cloakroom sets the tone for the stylish interiors that await. The 22ft8 living room beckons with its warm ambiance, anchored by a feature log burner - a perfect spot for cosy gatherings. The heart of the home lies in the 27ft4 kitchen/dining room which has bi-fold doors opening to the rear garden. This light and airy room has extensive quartz worktops, a feature island with solid wood worktop, a range style oven, integrated dishwasher, full height fridge, undercounter freezer, built-in microwave and the convenience of a Quooker hot tap, a utility room with doors accessing the garage and side aspect adds to the practicality of daily living.



This property is presented by Duncan Stead - a Love Homes property expert with over 25 years' experience.

Find out more about this property by scanning the QR code.



1.6m



4



1



2

Tenure: Freehold

Council Tax: E

Flitwick & Ampthill 01525 713111



Barton-le-Clay and Luton 01582 882440



Biggleswade & Sandy 01767 669222

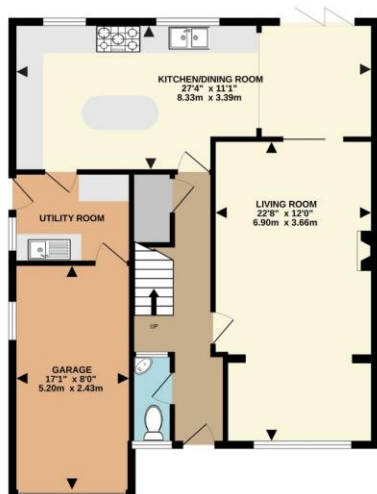


This stunning detached home is nestled in a sought after residential location just yards from the village high street and local school. Boasting an impressive extension, this home is tailor made for a large or extended family seeking generous and contemporary living spaces. Meticulously improved in recent years, the property exudes a sense of modern luxury throughout.

This property is a hidden gem revealing more than meets the eye so don't miss the opportunity to make this your dream home!



GROUND FLOOR
869 sq.ft. (80.7 sq.m.) approx.



1ST FLOOR
754 sq.ft. (70.1 sq.m.) approx.



2ND FLOOR
599 sq.ft. (55.6 sq.m.) approx.



TOTAL FLOOR AREA: 2222 sq.ft. (206.4 sq.m.) approx.
 Drawn by Love Homes for illustrative purposes only. Measurements and areas shown are approximate.
 Made with Metropix ©2023

Score	Energy rating	Current	Potential
92+	A		
81-91	B		
69-80	C		76 C
55-68	D	58 D	
39-54	E		
21-38	F		
1-20	G		



These particulars are set out as a general outline in accordance with the Property Misdescriptions Act (1991) only for the guidance of intending purchasers or lessees, and do not constitute any part of an offer or contract. Details are given without any responsibility, and any intending purchasers, lessees or third parties should not rely on them as statements or representations of fact but must satisfy themselves by inspection or otherwise as to the correctness of each of them. We have not carried out a structural survey and the services, appliances and specific fittings have not been tested. All photographs, measurements, floor plans and distances referred to are given as a guide only and should not be relied upon for the purchase of carpets or any other fixtures or fittings. Gardens, roof terraces, balconies and communal gardens as well as tenure and lease details cannot have their accuracy guaranteed for intending purchasers. Lease details, service ground rent (where applicable) are given as a guide only and should be checked and confirmed by your solicitor prior to exchange of contracts. No person in the employment of Love Homes has any authority to make any representation or warranty whatever in relation to this property. Purchase prices, rents or other prices quoted are correct at the date of publication and, unless otherwise stated, are exclusive of VAT. We retain the copyright in all advertising material used to market this Property. All information is as advised by the seller and subject to change. Council tax bands can be subject to change by the local council.

5 The Russell Centre, Coniston Road, Flitwick, MK45 1QY
 Tel: 01525 713111

Email: flitwick@lovehomes.uk

www.lovehomes.uk



Love Homes