

Love Homes



Shackleton Gardens, Flitwick, Bedfordshire MK45 1GR

The property enjoys light and airy family accommodation that briefly comprises; an entrance hall with downstairs cloakroom, a fabulous dual aspect open plan living/dining room with French doors accessing the rear garden and a stylish kitchen with integrated appliances that include a fridge/freezer, washing machine and dishwasher. The first floor benefits from a main bedroom with en-suite shower room, three further bedrooms (one of which is currently used as a dressing room) and a stylish family bathroom whilst further features include double glazed windows throughout, gas to radiator central heating and ample storage space.



This property is presented by Duncan Stead - a Love Homes property expert with over 25 years' experience.

Find out more about this property by scanning the QR code.



0.4m



4



1



2

Tenure: Freehold

Council Tax: D



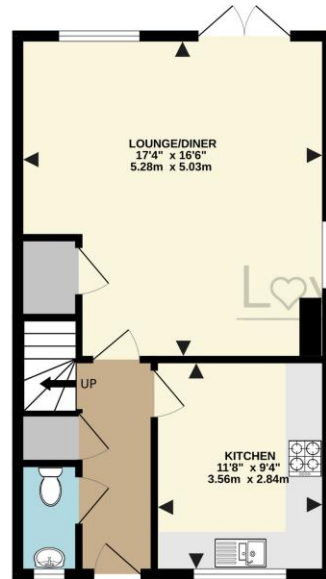


❤

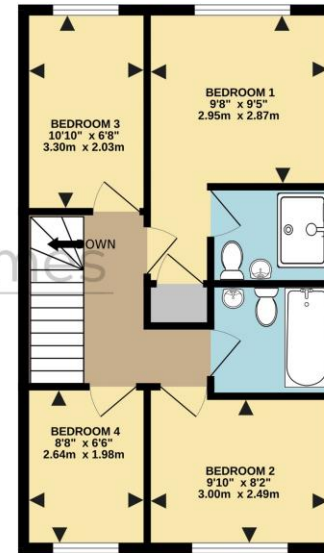
"The Steppingley Gardens development is lovely, there is a great sense of community for such a modern development and a lovely mixture of families of all ages. We chose this property because it had a slightly larger garden than the others, and the fact it was southerly facing so gets a lot of sun. This is a great practical house for all, close to local schools and the leisure centre as well as local shops and the train station, but also ideal if you like the countryside - the nearby walks through the surrounding fields are just fabulous at sunset."



GROUND FLOOR
478 sq.ft. (44.4 sq.m.) approx.



1ST FLOOR
482 sq.ft. (44.8 sq.m.) approx.



TOTAL FLOOR AREA: 960 sq.ft. (89.2 sq.m.) approx.
Drawn by Love Homes for illustrative purposes only. Measurements and areas shown are approximate.
Made with Metropix ©2023

Score	Energy rating	Current	Potential
92+	A		95 A
81-91	B	84 B	
69-80	C		
55-68	D		
39-54	E		
21-38	F		
1-20	G		



These particulars are set out as a general outline in accordance with the Property Misdescriptions Act (1991) only for the guidance of intending purchasers or lessees, and do not constitute any part of an offer or contract. Details are given without any responsibility, and any intending purchasers, lessees or third parties should not rely on them as statements or representations of fact but must satisfy themselves by inspection or otherwise as to the correctness of each of them. We have not carried out a structural survey and the services, appliances and specific fittings have not been tested. All photographs, measurements, floor plans and distances referred to are given as a guide only and should not be relied upon for the purchase of carpets or any other fixtures or fittings. Gardens, roof terraces, balconies and communal gardens as well as tenure and lease details cannot have their accuracy guaranteed for intending purchasers. Lease details, service ground rent (where applicable) are given as a guide only and should be checked and confirmed by your solicitor prior to exchange of contracts. No person in the employment of Love Homes has any authority to make any representation or warranty whatever in relation to this property. Purchase prices, rents or other prices quoted are correct at the date of publication and, unless otherwise stated, are exclusive of VAT. We retain the copyright in all advertising material used to market this Property. All information is as advised by the seller and subject to change. Council tax bands can be subject to change by the local council.

5 The Russell Centre, Coniston Road, Flitwick, MK45 1QY
Tel: 01525 713111

Email: flitwick@lovehomes.uk

www.lovehomes.uk



Love Homes