

44 TITE STREET

CHELSEA

THE HOUSE OF WONDERFUL POSSIBILITIES

Welcome to 44 Tite Street, a unique, exceptionally wide studio house in one of the most famed streets in Chelsea. It boasts a breathtaking studio room, a large open-style kitchen, six bedrooms, separate dining room and study, generous hallway and a desirable garden with mature trees. It also offers a second entrance leading to a guest flat with own kitchen and bathroom.

The magnificent studio room has almost 6 metre high ceilings and would be ideal for entertaining on a grand scale. The house will also appeal to artists, musicians, collectors, and those with an appreciation of Chelsea's cultural history.

HISTORY

This Grade II* listed house was first occupied by the celebrity portrait artist, Frank Miles, and his lodger, Oscar Wilde, who delightedly referred to Tite Street as the "Street of Wonderful Possibilities".

The house was a magnet not only for artists and the literati, but also members of high society who were attracted by its reputation for flexible morality and bohemian values. Lilly Langtry was a frequent visitor, as were many of the royal mistresses. Studio houses were ubiquitous in Chelsea when it was home to artists such as Whistler, Sargent and Turner, but are now a sought-after rarity.

Designed by celebrated architect, Edward Godwin in 1879, it is considered his masterpiece and one of the finest architectural examples of the aesthetic movement. The house retains many original features including a staircase with Japanese lattice-work design and a charming inglenook.





ACCOMMODATION

- Entrance hall
- Two sitting rooms
- Dining room
- 5 Further bedrooms
- Laundry/kitchenette
- Two cloakrooms
- Studio room
- Kitchen/family room
- Principal bedroom suite
- 3 Further bathrooms
- Garden





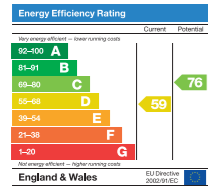












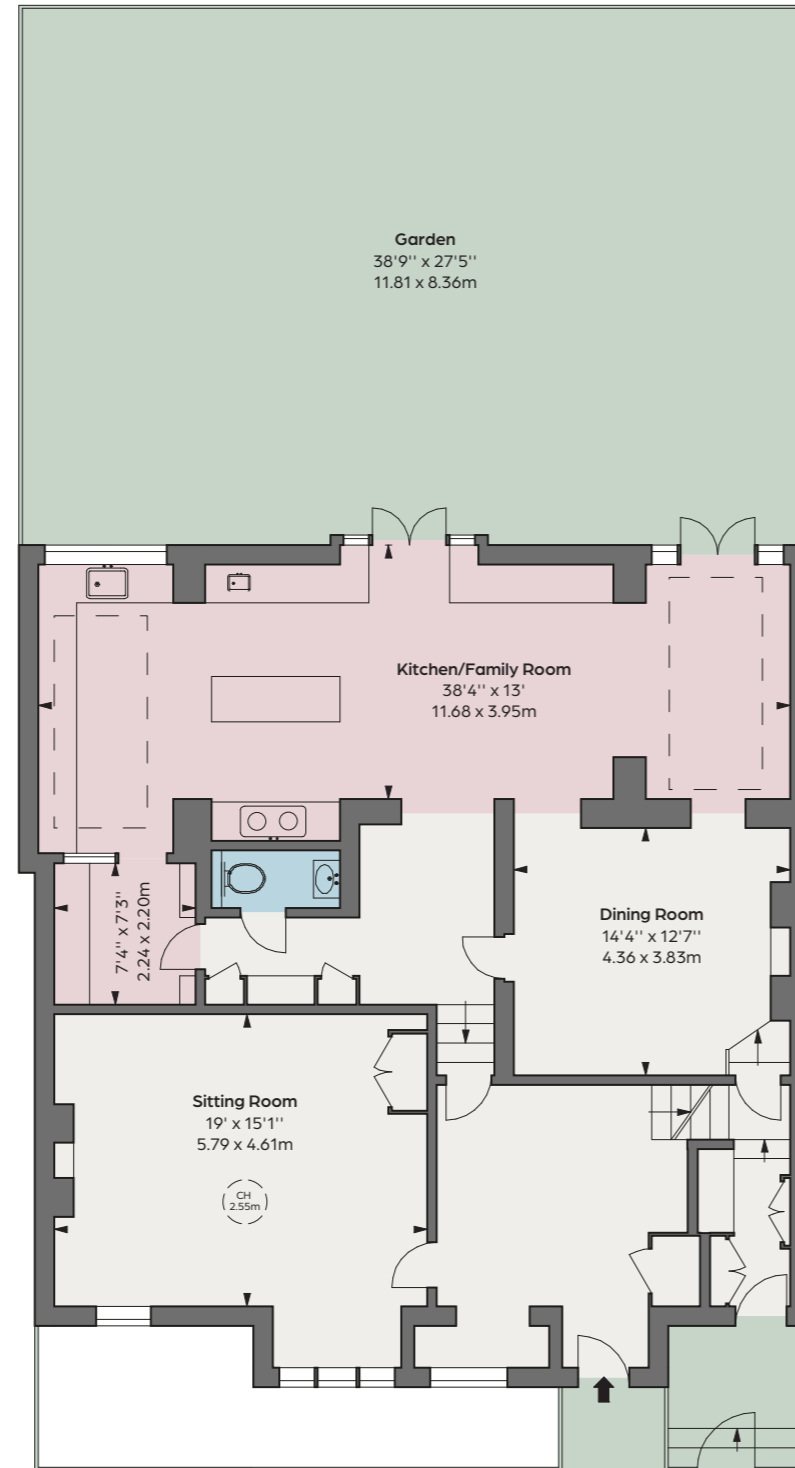
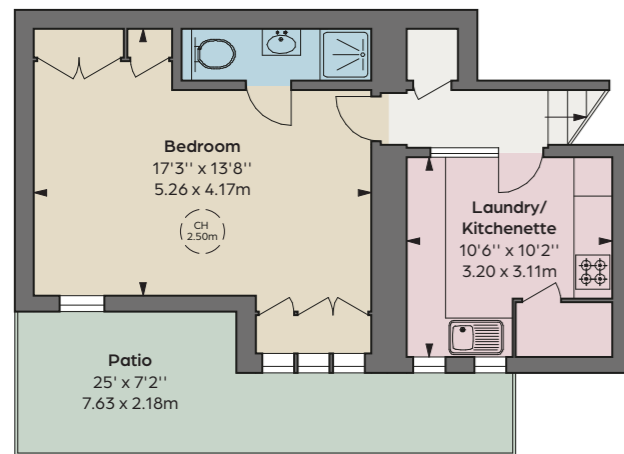
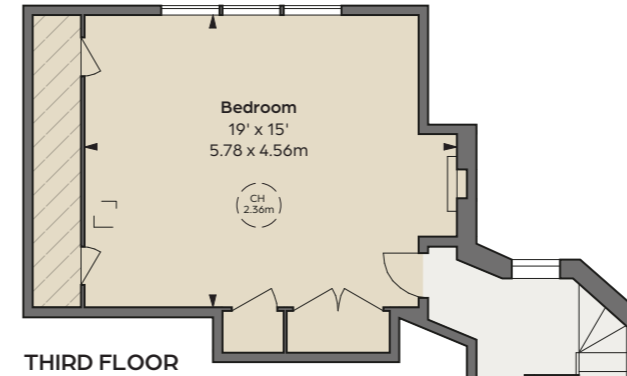
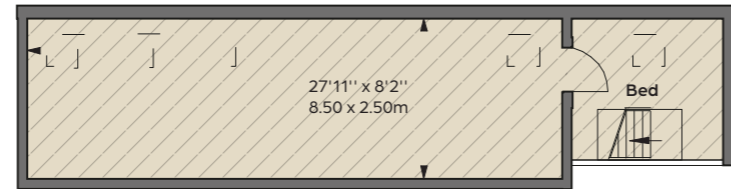
Approximate Gross Internal Area
5,188 sq ft / 482.21 sq m
including under 1.5m

Under 1.5m Area
320 sq ft / 29.81 sq m

Hatched Area: Under 1.5m
CH: Ceiling height

Floorplan for guidance only, not to scale or valuations purposes. It must not be relied upon as a statement of fact. All measurements and areas are approximate and have been prepared in accordance with the current edition of the RICS Code of Measuring Practice.

© Alex Winship Photography



These particulars are for general information only and do not constitute any part of an offer or contract. All statements contained therein are made without responsibility on the part of the vendors or lessors and are not to be relied upon as statement or representation of fact. Intending purchasers or lessees must satisfy themselves, by inspection, or otherwise, as to the correctness of each of the statements or dimensions contained in these particulars. This floorplan is for guidance only and not for valuation purposes. 20/09/24 TLAMB-230602C-13-GG

Tenure

Freehold

Local Authority

The Royal Borough of
Kensington & Chelsea

Guide Price

£11,950,000

Subject to contract

T O M L A M B A D V I S O R S

+44 7870 999 225
tom@tomlambadvisers.com



FORBES GILBERT-GREEN

+44 (0) 20 7871 7268
info@forbesgilbertgreen.com
forbesgilbertgreen.com