

8 The Cross, Neston, Cheshire, CH64 9UB

Tel: 0151 3368171

lettings@vistaabode.com

www.andrewsestates.co.uk



**16 Cuppin Street, Chester, Cheshire CH1 2BN**  
**£1,095 PCM**

## Property Description

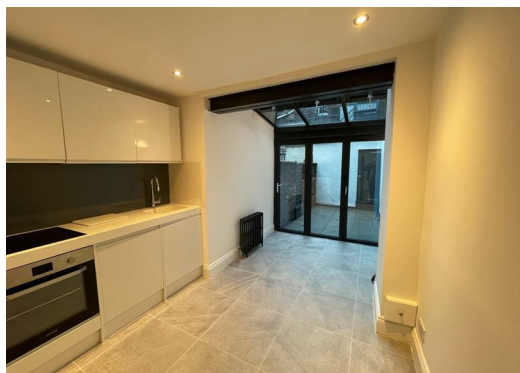
Vista Abode are delighted to offer this attractive two bedroom town house ideally situated along Cuppin Street in Chester City Centre. The accommodation, which is set over three floors, briefly comprises: living room with decorative cast-iron fireplace, impressive open-plan kitchen and dining area fitted with a modern range of white high gloss fronted units with Corian worktops and bi-folding doors to outside, first floor landing, bedroom, impressive bathroom with a free-standing double ended bath and walk-in shower and on the second floor there is the principal bedroom. The property is presented throughout to a high standard with a number of contemporary features including column radiators, modern kitchen units and stylish bathroom. The property benefits from gas fired central heating. There is a resident's parking scheme in operation in the area. To the rear there is a delightful courtyard style garden with paving and brick-built store. If you are looking for a period house within the city walls then we would strongly urge you to view.

### Further Key Features:

- Free Fibre Wi-Fi
- EPC Rating – D
- Council Tax Band - C

Call 0151 336 8171 to arrange a viewing







Energy Efficiency Rating		Current	Potential
Very energy efficient - lower running costs	(92 plus) <b>A</b>		
(81-91) <b>B</b>			
(69-80) <b>C</b>			
(55-68) <b>D</b>			
(39-54) <b>E</b>			
(21-38) <b>F</b>			
(1-20) <b>G</b>			
Not energy efficient - higher running costs			
<b>England &amp; Wales</b>		EU Directive 2002/91/EC	

Environmental Impact (CO <sub>2</sub> ) Rating		Current	Potential
Very environmentally friendly - lower CO <sub>2</sub> emissions	(92 plus) <b>A</b>		
(81-91) <b>B</b>			
(69-80) <b>C</b>			
(55-68) <b>D</b>			
(39-54) <b>E</b>			
(21-38) <b>F</b>			
(1-20) <b>G</b>			
Not environmentally friendly - higher CO <sub>2</sub> emissions			
<b>England &amp; Wales</b>		EU Directive 2002/91/EC	