

## Grove Road, Birkenhead, CH42 3XU



**£140,000**

\*VISTA ABODE are delighted to bring this property to the market For Sale\*

Ideal for an investment property with a tenant already in situ.

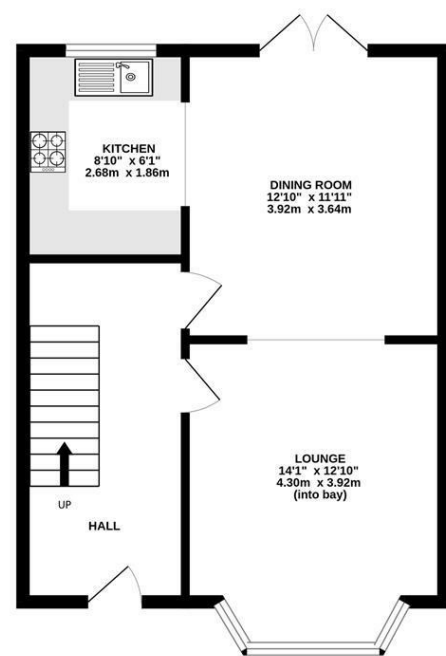
This three bedroom end terrace fully re-furbished house, ideally situated close to primary and secondary school's, also local amenities and train station.

Having gas central heating the property is double glazed, the accommodation briefly comprises, lounge, kitchen/diner, bathroom, three bedrooms.

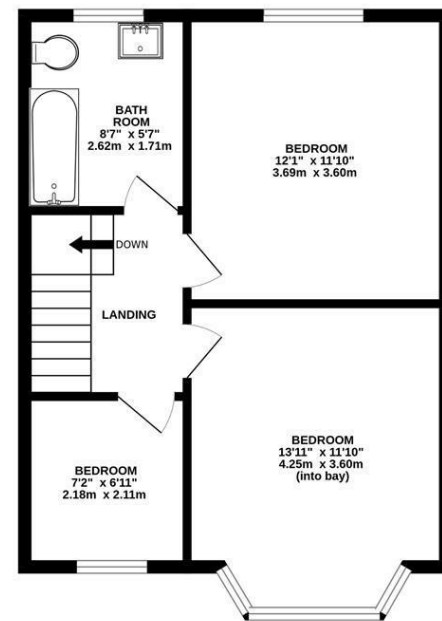
To the rear of the property there is a private courtyard.

To arrange viewing please call Vista Abode  
0151 336 8171

GROUND FLOOR

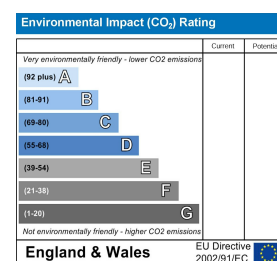
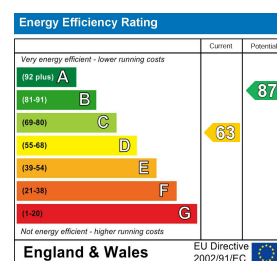


1ST FLOOR



GROVE ROAD, BIRKENHEAD

Whilst every attempt has been made to ensure the accuracy of the floorplan contained here, measurements of doors, windows, rooms and any other items are approximate and no responsibility is taken for any error, omission or mis-statement. This plan is for illustrative purposes only and should be used as such by any prospective purchaser. The services, systems and appliances shown have not been tested and no guarantee as to their operability or efficiency can be given.  
Made with Metropix ©2023





## Grove Road, Birkenhead, CH42 3XU

### Hall

Front door, radiator, flooring.

### Lounge

Window to front elevation with blinds, radiator and new carpet.

### Kitchen/Diner

Window to rear elevation with blinds, new fitted wall and base units, inset sink and drainer, oven and hob, extractor fan, space and plumbing for washing machine, space for fridge/freezer, partially tiled walls, patio doors in dining area.

### Bedroom 1

Window to front elevation with blinds, radiator and new carpet.

### Bedroom 2

Window to rear elevation with blinds, radiator and new carpet.

### Bedroom 3

Window to front elevation with blinds, radiator and new carpet.

### Bathroom

Window to rear elevation, Bath with overhead shower, hand basin and WC, Chrome towel radiator, tiled walls.

### Externally

To the front of the property there is a low level wall. To the rear of the property there is a courtyard.

