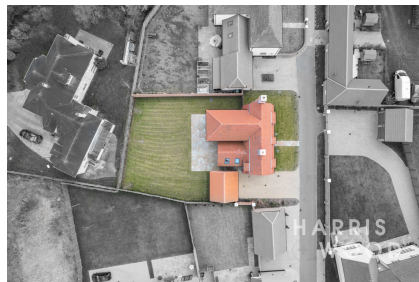




Jarrett Lane Great Horkesley



- ✓ Brand New Three/four Bedroom Detached Home
- ✓ Spanning An Impressive 2,540 Square Feet
- ✓ Semi-rural Prestigious Development
- ✓ Constructed By Messrs Mersea Homes
- ✓ Ample Parking, Garage And Private Gardens
- ✓ Available To View Immediately

£995,000

Bedroom 4 Bathroom 4 Reception 3